



QUARTZ CRYSTAL RESONATOR

PARAMETERS

RHTNY7C-5032

Nominal frequency range: 8.000-54.000 MHZ , 45.000~60.000 MHZ

Crystal cut: Fundamental [AT-cut], 3rd overtone [AT-cut]

Storage temperature range: -40°C~+85°C

Operating temperature range: -10°C~+70°C, -30°C~+85°C

Frequency temperature characteristics(Ref. to +25°C): $\pm 30 \times 10^{-6} \pm 50 \times 10^{-6} \pm 100 \times 10^{-6}$

Frequency tolerance (at +25°C): $\pm 30 \times 10^{-6} \pm 50 \times 10^{-6}$

Equivalent series resistance: Please Refer to the Following ESR Table

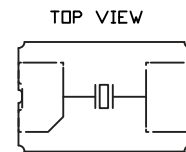
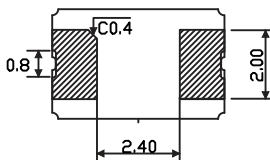
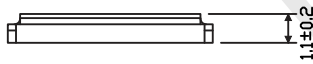
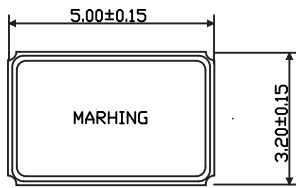
Load capacitance: Series, 10pF, 12pF, 16pF, 18pF, 20pF

Shunt capacitance: 5pF max.

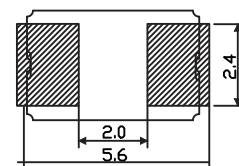
Level of drive: 10 μW (100 μ .W max)



Outline and Dimensions [unit:mm]



Example of a Terminal Land Pattern



Frequency	ESR(Ω)
Fundamental	
8.000~9.999	80
10.000~11.999	50
12.000~54.999	40
3rd overtone	
45.000~60.000	90

ORDER INFORMATION

