



QUARTZ CRYSTAL RESONATOR

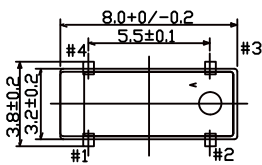
PARAMETERS

RHTNYC-306

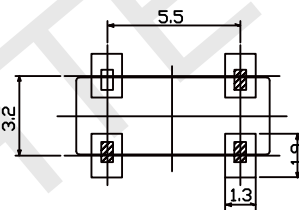
Nominal frequency range: 32.768 KHZ  
 Crystal cut: Fundamental [AT-cut]  
 Storage temperature range: -55°C~+125°C  
 Operating temperature range: -40°C~+85°C  
 Turnover temperature: -25±5°C  
 Parabolic coefficient:  $-0.04 \times 10^{-6} / ^\circ\text{C}^2$  Max.  
 Frequency tolerance (at +25°C):  $\pm 20 \times 10^{-6}$ , or specify  
 Equivalent series resistance: 50KΩ max.  
 Load capacitance: 12.5pF, or specify  
 Shunt capacitance: 0.9pF max.  
 Level of drive: 1.0 μW max.



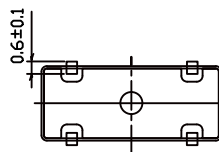
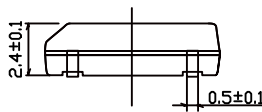
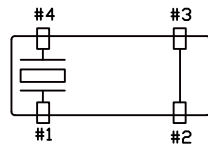
Outline and Dimensions [unit:mm]



Top View Suggested Layout



Top View Crystal Connection



ORDER INFORMATION

