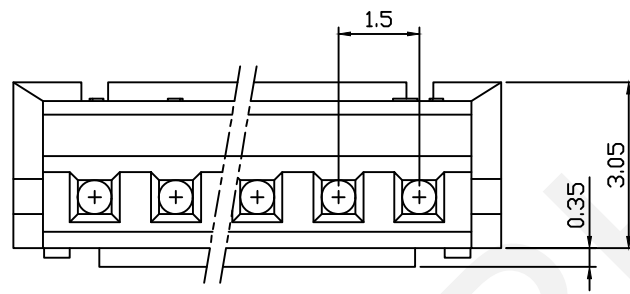
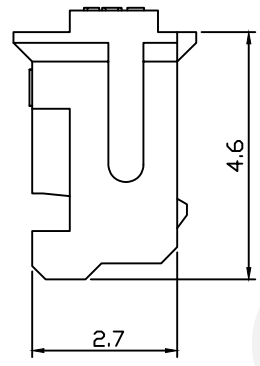
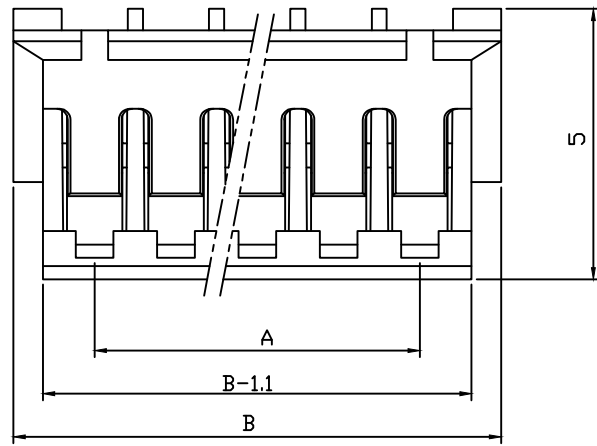


RoHS Compliance



Range	>0~3	>3~18	>18~50	>50~120
Tolerance	±0.12	±0.15	±0.3	±0.5

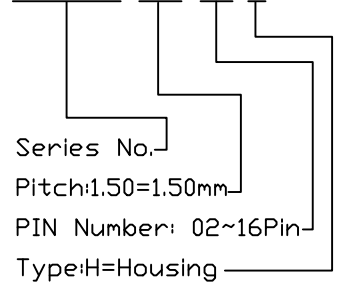
Pin	Dimension(mm)	
	A	B
02	1.50	4.50
03	3.00	6.00
04	4.50	7.50
05	6.00	9.00
06	7.50	10.50
07	9.00	12.00
08	10.50	13.50
09	12.00	15.00
10	13.50	16.50
11	15.00	18.00
12	16.50	19.50
13	18.00	21.00
14	19.50	22.50
15	21.00	24.00
16	22.50	25.50

Material:
Housing:PA66(UL94V-0/V-2),White

- Electrical Characteristics:
- 1.Poles: 2 to 16P
 - 2.Current Rating: 1.0A
 - 3.Voltage Rating:50V
 - 4.Temperature Range:-25℃ To +85℃
 - 5.Contact Resistance: ≤20mΩ
 - 6.Insulation Resistance: ≥500MΩ
 - 7.Withstand Voltage:500V AC/Minute
 - 8.Applicable Wire: AWG #32 To #22
 - 9.Applicable PC Board Thickness: 1.2mm To 1.6mm

Order Information

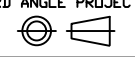
RHTAYL1-1.50-XX-H



NINGBO RHT ELECTRONIC CO.,LTD

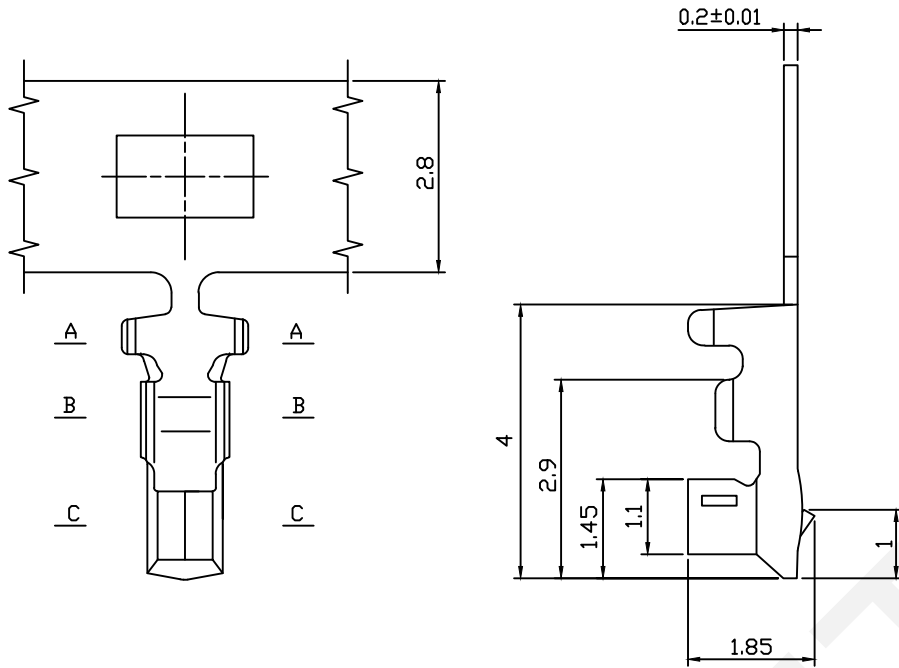
UNITS:mm	SHEET SIZE: A4				SCALE:---	DRWN BY PAN
0~3	3~18	18~50	50~120	CHK'D BY FENG	THIRD ANGLE PROJECTION	
±0.12	±0.15	±0.3	±0.5	APPR BY ZHAN	RHTAYL1-1.50-XX-H	

1.50mm ZH Type Wire To Board Connector



RHTAYL1-1.50-XX-H

RoHS Compliance

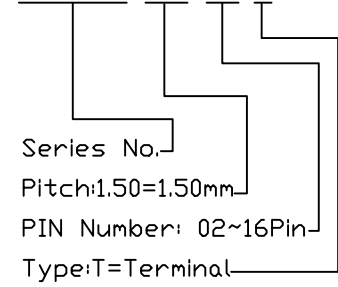


Pin	Dimension(mm)	
	A	B
02	1.50	4.50
03	3.00	6.00
04	4.50	7.50
05	6.00	9.00
06	7.50	10.50
07	9.00	12.00
08	10.50	13.50
09	12.00	15.00
10	13.50	16.50
11	15.00	18.00
12	16.50	19.50
13	18.00	21.00
14	19.50	22.50
15	21.00	24.00
16	22.50	25.50

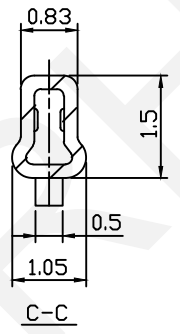
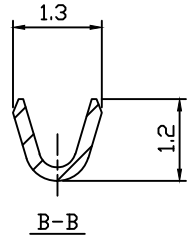
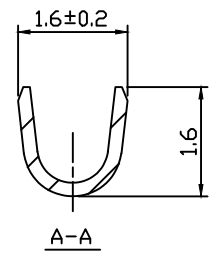
Material:
Terminal: Phos Bronze, Tin plating

- Electrical Characteristics:
- 1.Current Rating: 1.0A
 - 2.Voltage Rating: 50V
 - 3.Temperature Range:-25℃ To +85℃
 - 4.Contact Resistance: ≤20mΩ
 - 5.Insulation Resistance: ≥500MΩ
 - 6.Withstand Voltage:500V AC/Minute
 - 7.Applicable Wire: AWG #32 To #26
 - 8.Applicable PC Board Thickness: 0.6mm To 1.2mm,1.6mm

Order Information
RHTAYL1-1.50-XX-T



Range	>0~3	>3~18	>18~50	>50~120
Tolerance	±0.12	±0.15	±0.3	±0.5



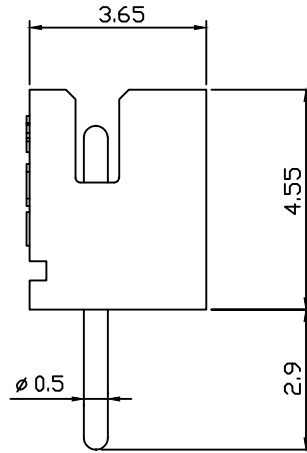
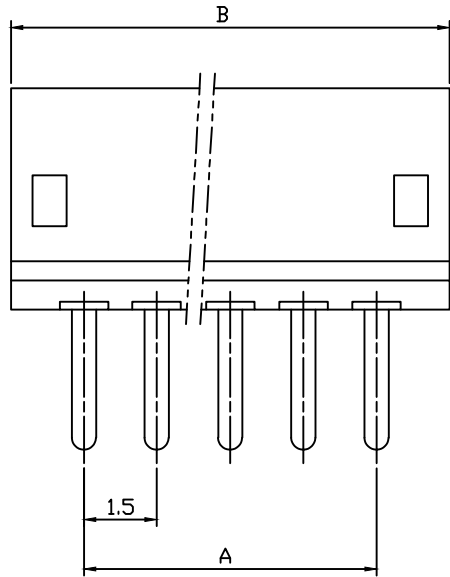
NINGBO RHT ELECTRONIC CO.,LTD

UNITS:mm	SHEET SIZE: A4				SCALE:---	DRWN BY PAN
0~3	3~18	18~50	50~120	CHK'D BY FENG	1.50mm ZH Type Wire To Board Connector	
±0.12	±0.15	±0.3	±0.5	APPR BY ZHAN	THIRD ANGLE PROJECTION	RHTAYL1-1.50-XX-T



RHTAYL1-1.50-XX-T

RoHS Compliance



Material:

Housing: PA66(UL94V-0/V-2), White

Contact: Brass Tin Plating

Electrical Characteristics:

1. Poles: 2 to 16P

2. Current Rating: 1.0A

3. Voltage Rating: 50V

4. Temperature Range: -25°C To +85°C

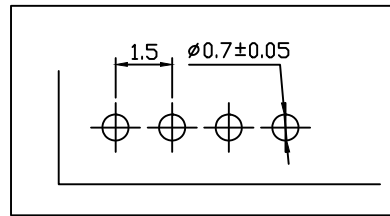
5. Contact Resistance: $\leq 20m\Omega$

6. Insulation Resistance: $\geq 500M\Omega$

7. Withstand Voltage: 500V AC/Minute

8. Applicable Wire: AWG #32 To #22

9. Applicable PC Board Thickness: 1.2mm To 1.6mm



PCB Layout

Pin	Dimension(mm)	
	A	B
02	1.50	4.50
03	3.00	6.00
04	4.50	7.50
05	6.00	9.00
06	7.50	10.50
07	9.00	12.00
08	10.50	13.50
09	12.00	15.00
10	13.50	16.50
11	15.00	18.00
12	16.50	19.50
13	18.00	21.00
14	19.50	22.50
15	21.00	24.00
16	22.50	25.50

Order Information

RHTAYL1-1.50-XX-S

Series No.:

Pitch: 1.50=1.50mm

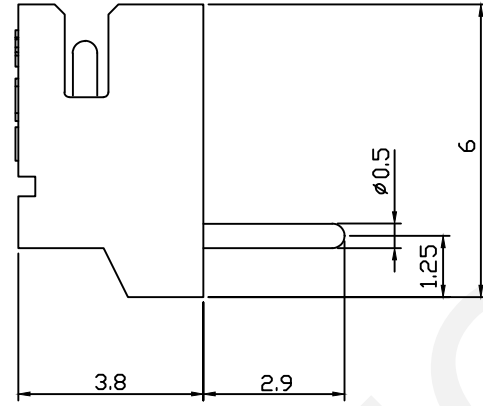
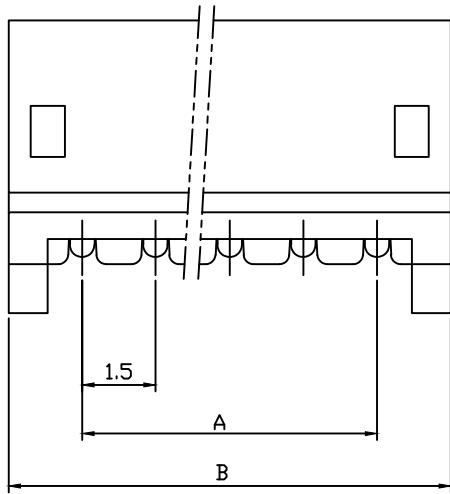
PIN Number: 02~16Pin

Type: S-Straight Male Pin

Range	>0~3	>3~18	>18~50	>50~120
Tolerance	±0.12	±0.15	±0.3	±0.5

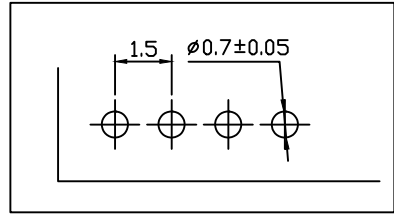
	UNITS:mm				SHEET SIZE: A4		SCALE: ---		DRWN BY PAN		1.50mm ZH Type Wire To Board Connector	
	0~3		3~18		18~50		50~120		CHK'D BY FENG		THIRD ANGLE PROJECTION 	
	±0.12		±0.15		±0.3		±0.5		APPR BY ZHAN			

RoHS Compliance



Material:
Housing:PA66(UL94V-0/V-2),White
Contact:Brass Tin Plating

- Electrical Characteristics:
- 1.Poles: 2 to 16P
 - 2.Current Rating: 1.0A
 - 3.Voltage Rating:50V
 - 4.Temperature Range:-25℃ To +85℃
 - 5.Contact Resistance: ≤20mΩ
 - 6.Insulation Resistance: ≥500MΩ
 - 7.Withstand Voltage:500V AC/Minute
 - 8.Applicable Wire: AWG #32 To #22
 - 9.Applicable PC Board Thickness: 1.2mm To 1.6mm



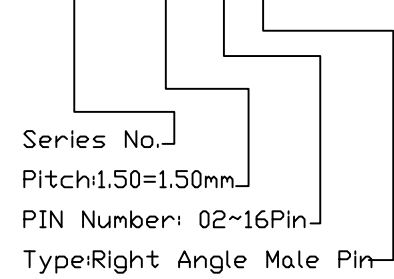
PCB Layout

Pin	Dimension(mm)	
	A	B
02	1.50	4.50
03	3.00	6.00
04	4.50	7.50
05	6.00	9.00
06	7.50	10.50
07	9.00	12.00
08	10.50	13.50
09	12.00	15.00
10	13.50	16.50
11	15.00	18.00
12	16.50	19.50
13	18.00	21.00
14	19.50	22.50
15	21.00	24.00
16	22.50	25.50

Range	>0~3	>3~18	>18~50	>50~120
Tolerance	±0.12	±0.15	±0.3	±0.5

Order Information

RHTAYL1-1.50-XX-R

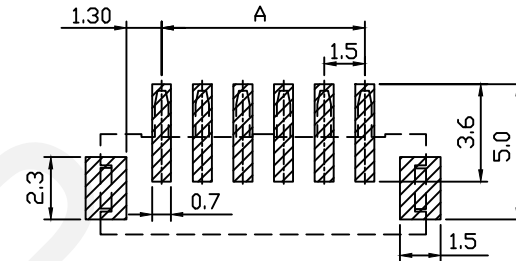
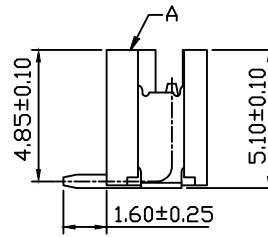
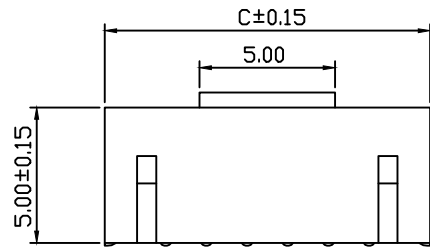


NINGBO RHT ELECTRONIC CO.,LTD

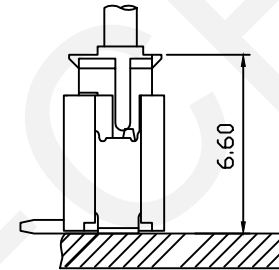
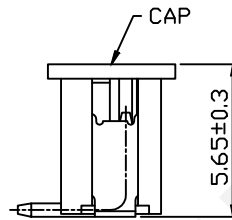
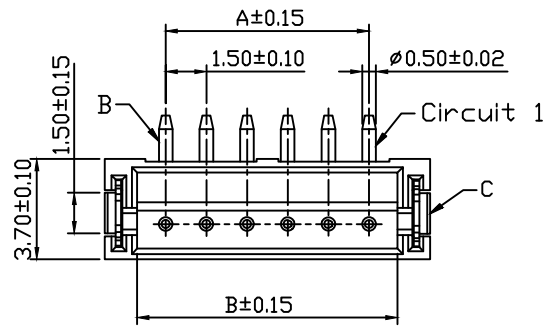
UNITS:mm	SHEET SIZE: A4			SCALE:---	DRWN BY PAN
0~3	3~18	18~50	50~120	CHK'D BY FENG	THIRD ANGLE PROJECTION
±0.12	±0.15	±0.3	±0.5	APPR BY ZHAN	

1.50mm ZH Type Wire To Board Connector
RHTAYL1-1.50-XX-R

RoHS Compliance



Suggested PCB Layout



Assembly Layout

Material:

Housing:LCP UL94V-0,Beige

Contact:Brass Tin Plated

Solder Tab:Phosphor Bronze,Tin Plated

Electrical Specification:

Poles: 2 to 16P

Contact Resistance: ≤20mΩ

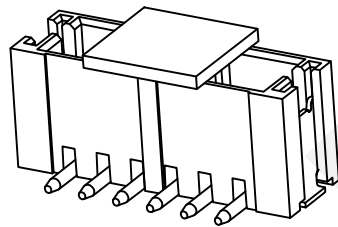
Insulation Resistance: ≥500MΩ

Rated Voltage:125V AC DC

Rated Current:1.0A AC DC

Withstand Voltage:500V AC/Minute

Temperature Range:-25℃~+105℃



Circuit	Dimension(mm)		
	A	B	C
02	1.50	3.60	6.00
03	3.00	5.10	7.50
04	4.50	6.60	9.00
05	6.00	8.10	10.50
06	7.50	9.60	12.00
07	9.00	11.10	13.50
08	10.50	12.60	15.00
09	12.00	14.10	16.50
10	13.50	15.60	18.00
11	15.00	17.10	19.50
12	16.50	18.60	21.00
13	18.00	20.10	22.50
14	19.50	21.60	24.00
15	21.00	23.10	25.50
16	22.50	24.60	27.00

UNITS:mm	SHEET SIZE: A4	SCALE:---	DRWN BY PAN
0~3	3~18	18~50	50~120
±0.12	±0.15	±0.3	±0.5
			CHK'D BY FENG
			APPR BY ZHAN

Ptich 1.50mm Vertical SMT Wafer

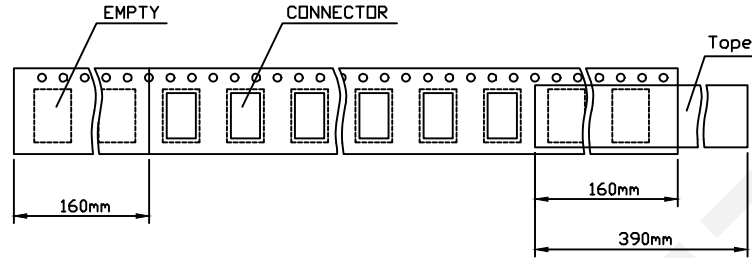
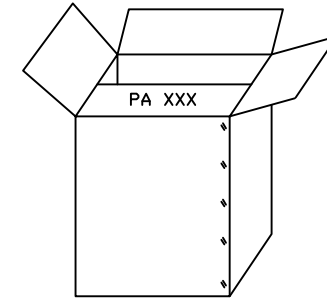
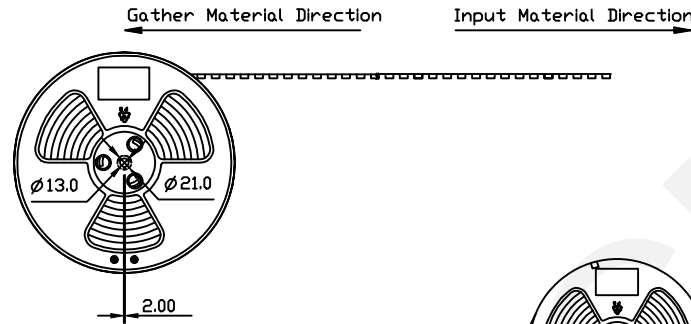
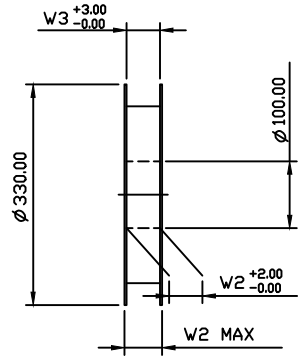
THIRD ANGLE PROJECTION



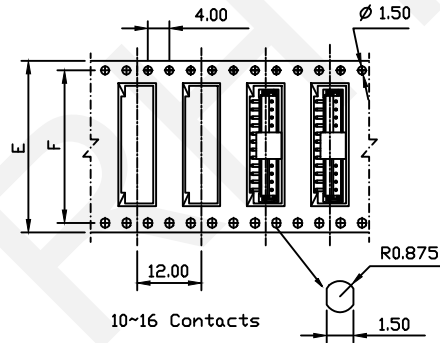
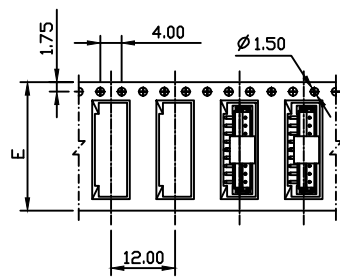
RHTAYL1-1.50-XX-VM

 NINGBO RHT ELECTRONIC CO.,LTD

RoHS Compliance



NOTE
 xReel Material:HIPS
 xCarrier Material:Clear,Conductive Polystyrene Alloy
 xCover Tape Material:Polyester
 xCover Tape Peel Strength:0.1N-13N
 xCarrier Camber Is Within 1mm In 100mm



Circuit	Dimension(mm)				
	E	F	W1	W2	W3
02-03 PIN	16.00	--	16.50	22.50	16.50
04-08 PIN	24.00	--	24.50	30.50	24.50
10-12 PIN	32.00	28.40	32.50	38.50	32.50
13 PIN	44.00	40.40	44.50	50.50	44.50

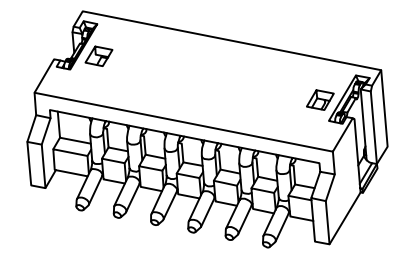
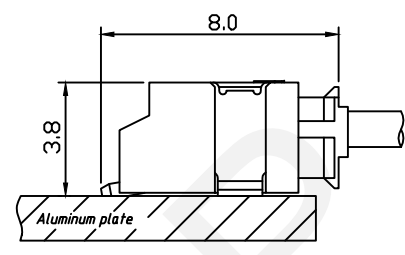
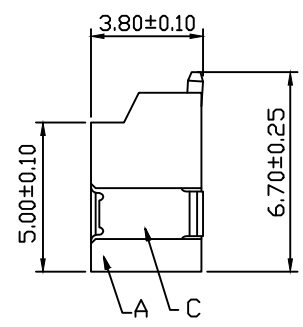
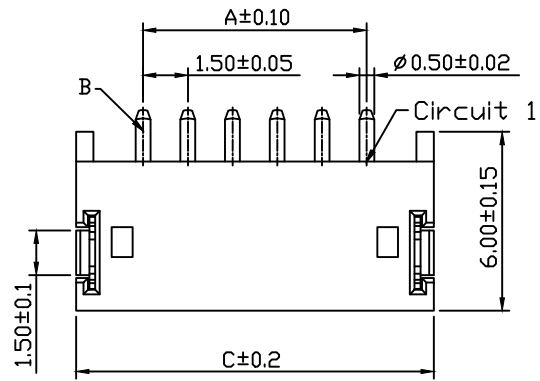
RHTECP NINGBO RHT ELECTRONIC CO.,LTD

UNITS:mm SHEET SIZE: A4 SCALE:---
 0~3 3~18 18~50 50~120
 ±0.12 ±0.15 ±0.3 ±0.5

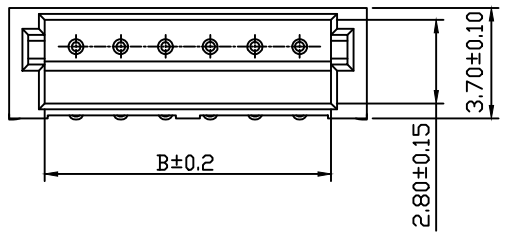
DRWN BY PAN
 CHK'D BY FENG
 APPR BY ZHAN

Packaging Specification
 Ptich 1.50mm Vertical SMT
 THIRD ANGLE PROJECTION
 RHTAYL1-1.50-XX-VM

RoHS Compliance



Assembly Layout



Circuit	Dimension(mm)		
	A	B	C
02	1.50	3.60	6.00
03	3.00	5.10	7.50
04	4.50	6.60	9.00
05	6.00	8.10	10.50
06	7.50	9.60	12.00
07	9.00	11.10	13.50
08	10.50	12.60	15.00
09	12.00	14.10	16.50
10	13.50	15.60	18.00
11	15.00	17.10	19.50
12	16.50	18.60	21.00
13	18.00	20.10	22.50
14	19.50	21.60	24.00
15	21.00	23.10	25.50
16	22.50	24.60	27.00

Material:

Housing:LCP UL94V-0,Belge

Contact:Brass Tin Plated

SolderTab:Phosphor Bronze,Tin Plated

Electrical Specification:

Poles: 2 to 16P

Contact Resistance: ≤20mΩ

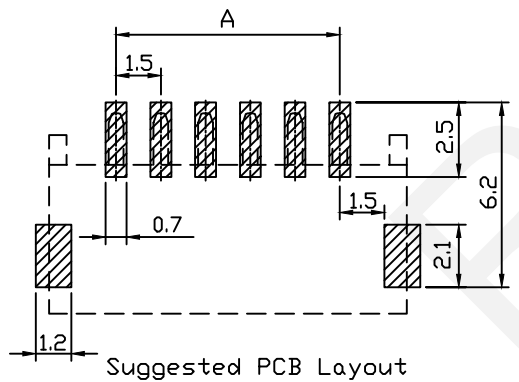
Insulation Resistance: ≥500MΩ

Rated Voltage:125V AC DC

Rated Current:1.0A AC DC

Withstand Voltage:500V AC/Minute

Temperature Range:-25℃~+105℃



Suggested PCB Layout



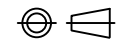
NINGBO RHT ELECTRONIC CO.,LTD

UNITS:mm	SHEET SIZE: A4	SCALE:---	DRWN BY PAN
0~3	3~18	18~50	50~120
±0.12	±0.15	±0.3	±0.5

CHK'D BY FENG
APPR BY ZHAN

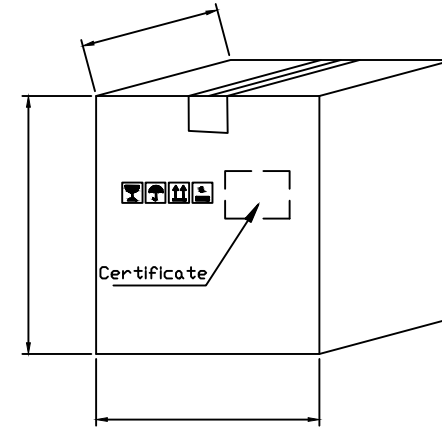
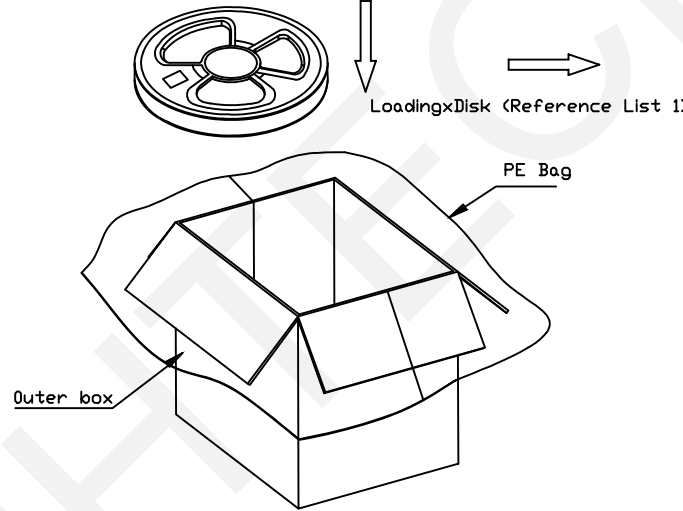
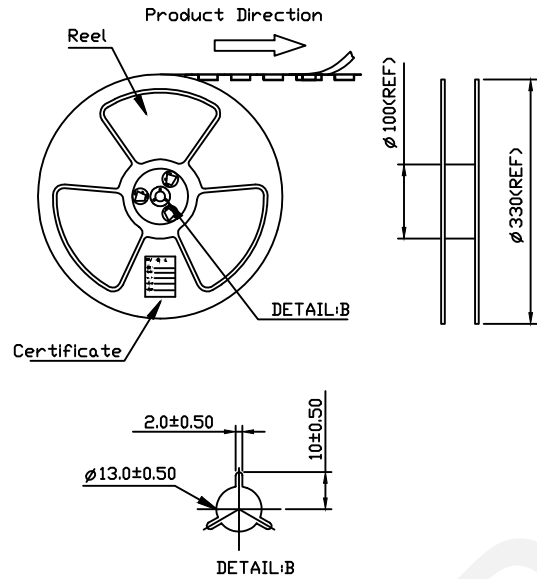
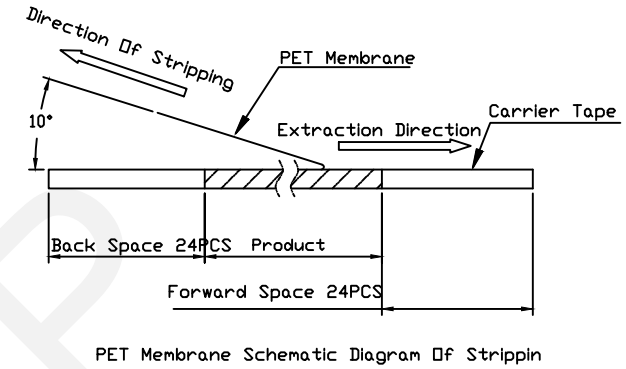
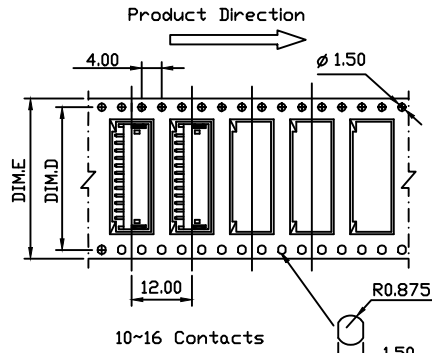
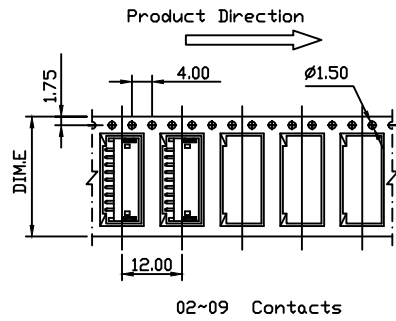
Ptich 1.50mm Horizontal SMT Wafer

THIRD ANGLE PROJECTION



RHTAYL1-1.50-XX-RM

RoHS Compliance



Circuit	Dimension(mm)				
	E	F	W1	W2	W3
02-03 PIN	16.00	--	16.50	22.50	16.50
04-08 PIN	24.00	--	24.50	30.50	24.50
10-12 PIN	32.00	28.40	32.50	38.50	32.50
13 PIN	44.00	40.40	44.50	50.50	44.50

Packaging Instructions

Pack The Finished Products Into Reels, Each With 1000 PCS
 The Product Will Be Packed by pasting Acertificate On the Reel.
 The Reel Is Put Into The Outer Box, and The Outer Box is Fitted
 With one first Large PE Bags With Qualified Certificates Affixed
 On The Outer Case

RHTECP NINGBO RHT ELECTRONIC CO.,LTD

UNITS:mm	SHEET SIZE: A4	SCALE:---	DRWN BY PAN
0~3	3~18	18~50	50~120
±0.12	±0.15	±0.3	±0.5
CHK'D BY FENG		APPR BY ZHAN	

Packaging Specification
 Ptich 1.50mm Horizontal SMT
 THIRD ANGLE PROJECTION

 RHTAYL1-1.50-XX-RM