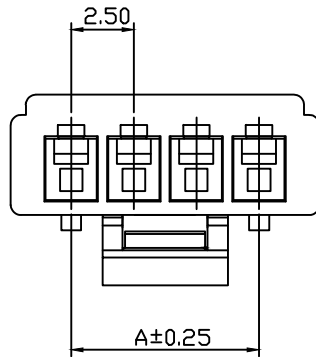
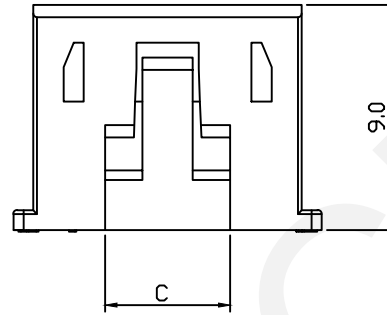
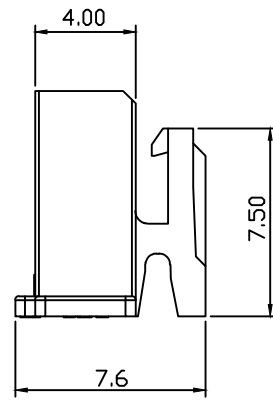
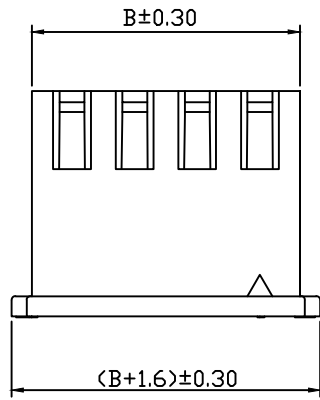


RoHS Compliance



Material:
Housing: PA66,UL94V-2

Electrical Characteristics:
Current Rating: 3.0AMP
Voltage Rating: 250V AC,DC
Temperature Range: -25°C~+85°C
Insulator Resistance: 1000MΩ/Min.
Withstanding Voltage: 1000V AC/Minute
Contact Resistance: 10MΩ/Max

Order Information:

RHTAY2.50L-XX-H

Pitch:2.50mm

XX-No.of 02~16 Pins

Type:

H/FH-Hosing T/MT-Terminal

S-Straight Male Pin

R-Right Angle Pin

RM-SMT Male Pin

Pin	Dimension(mm)		
	A	B	C
02	2.50	5.70	3.00
03	5.00	8.20	4.00
04	7.50	10.70	5.00
05	10.00	13.20	7.50
06	12.50	15.70	10.00
07	15.00	18.20	12.50
08	17.50	20.70	12.50
09	20.00	23.20	12.50
10	22.50	25.70	12.50
11	25.00	28.20	12.50
12	27.50	30.70	12.50
13	30.00	33.20	12.50
14	32.50	35.70	12.50
15	35.00	38.20	12.50
16	37.50	40.70	12.50

UNITS:mm	SHEET SIZE: A4	SCALE:---	DRWN BY PAN
0~3	3~18	18~50	50~120
±0.12	±0.15	±0.3	±0.5

CHK'D BY FENG
APPR BY ZHAN

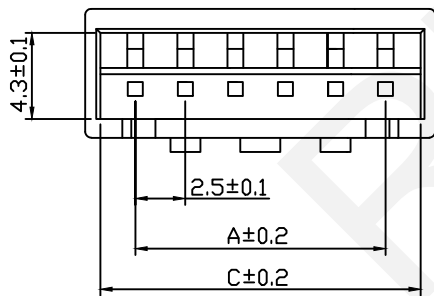
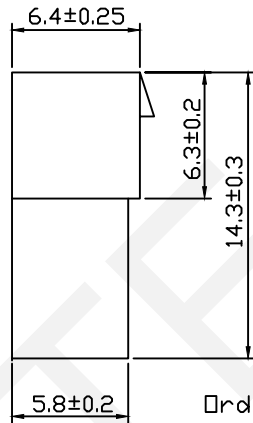
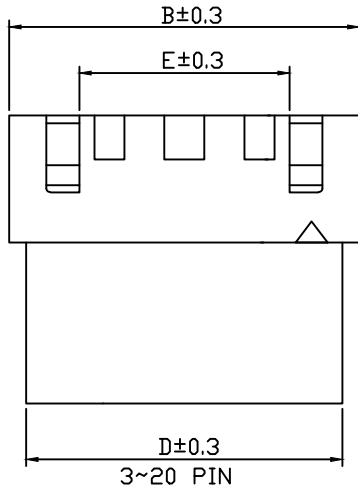
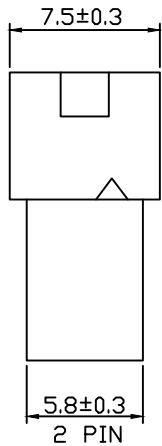
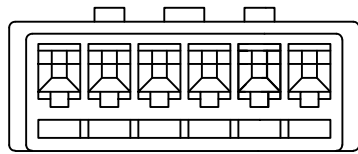
2.50mm Pitch XHB With
Lock Type Wire To Board Connector

THIRD ANGLE PROJECTION

RHTAY2.50L-XX-H

NINGBO RHT ELECTRONIC CO.,LTD

RoHS Compliance



Material:

Housing: PA66,UL94V-0,Natrual Color

Electrical Characteristics:

Current Rating: 3.0AMP

Voltage Rating: 250V AC,DC

Temperature Range: -25°C~+85°C

Insulator Resistance: 1000MΩ/Min.

Withstanding Voltage: 1000V AC/Minute

Contact Resistance: 10MΩ/Max

After Environmental Testing:20mΩ Max

Pin	Dimension(mm)				
	A	B	C	D	E
02	2.50	7.50	6.00	5.80	---
03	5.00	10.00	8.50	8.30	3.00
04	7.50	12.50	11.00	10.80	5.50
05	10.00	15.00	13.50	13.30	8.00
06	12.50	17.50	16.00	15.80	10.50
07	15.00	20.00	18.50	18.30	13.00
08	17.50	22.50	21.00	20.80	15.50
09	20.00	25.00	23.50	23.30	18.00
10	22.50	27.50	26.00	25.80	20.50
11	25.00	30.00	28.50	28.30	23.00
12	27.50	32.50	31.00	30.80	25.50
13	30.00	35.00	33.50	33.30	28.00
14	32.50	37.50	36.00	35.80	30.50
15	35.00	40.00	38.50	38.30	33.00
16	37.50	42.50	41.00	40.80	35.50
17	40.00	45.00	43.50	43.30	38.00
18	42.50	47.50	46.00	45.80	40.50
19	45.00	50.00	48.50	48.30	43.00
20	47.50	52.50	51.00	50.80	45.50

Order Information:

RHTAY2.50L-XX-FH

Pitch:2.50mm

XX-No.of 02~20 Pins

Type:

H/FH-Hosing T/MT-Terminal

S-Straight Male Pin

R-Right Angle Pin

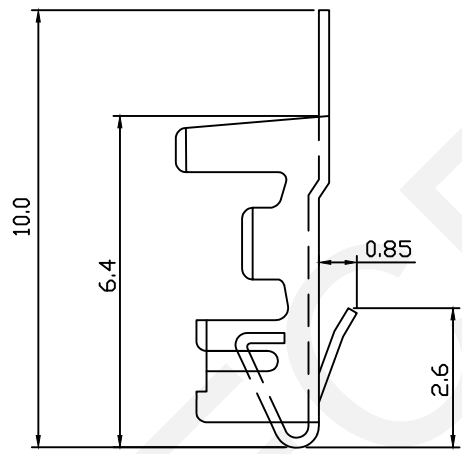
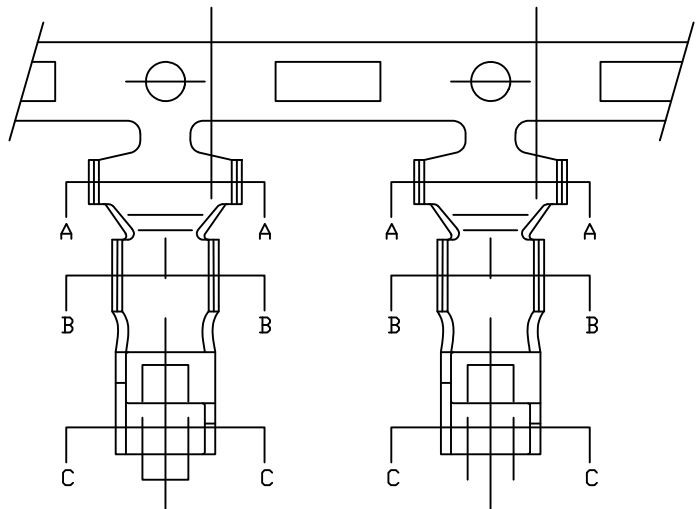
RM-SMT Male Pin

UNITS:mm	SHEET SIZE: A4	SCALE:---	DRWN BY PAN
0~3	3~18	18~50	50~120
±0.12	±0.15	±0.3	±0.5
CHK'D BY FENG		APPR BY ZHAN	

2.50mm Pitch XHB With Lock Type Wire To Board Connector	
THIRD ANGLE PROJECTION 	RHTAY2.50L-XX-FH

NINGBO RHT ELECTRONIC CO.,LTD

RoHS Compliance



Material:
 Terminal: Phosphor Bronze
 Rating: Tin plated
 Applicable Wires: AWG #22~#28
 Insulation O.D:1.2~1.6mm
 Qty/Reel: 6000 PCS

Electrical Characteristics:
 Current Rating: 3.0AMP
 Voltage Rating: 250V AC,DC
 Temperature Range: -25°C~+85°C
 Insulator Resistance: 1000MΩ/Min.
 Withstanding Voltage: 1000V AC/Minute
 Contact Resistance: 20MΩ/Max

Order Information:

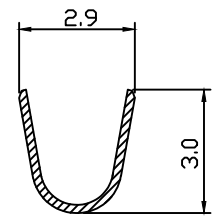
RHTAY2.50L-T



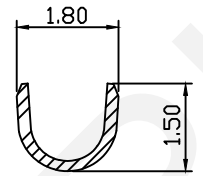
Pitch:2.50mm

Type:

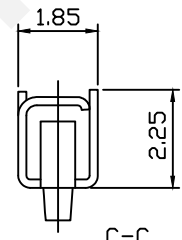
- H/FH-Hosing T/MT-Terminal
- S-Straight Male Pin
- R-Right Angle Pin
- RM-SMT Male Pin



A-A



B-B



C-C



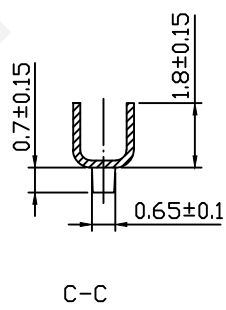
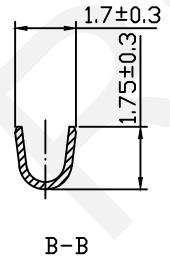
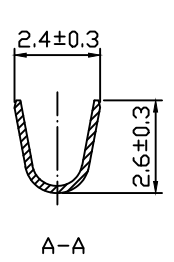
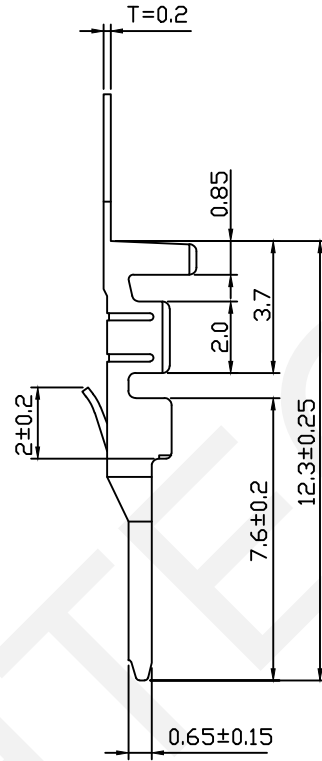
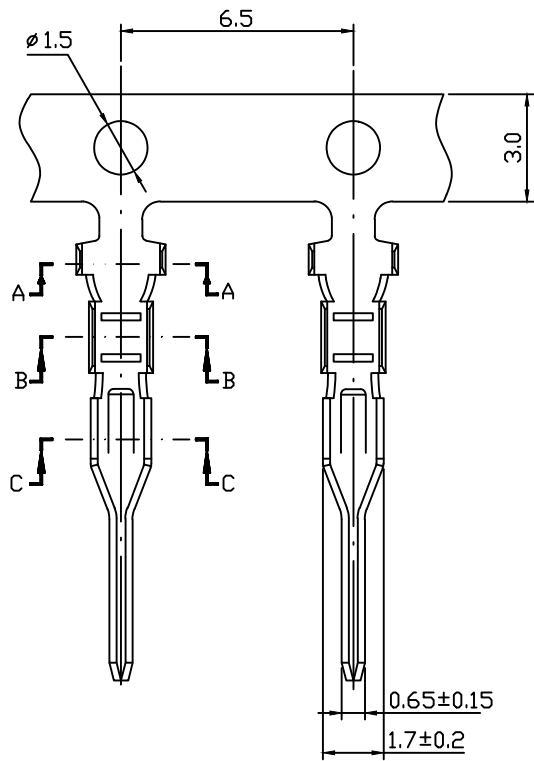
NINGBO RHT ELECTRONIC CO.,LTD

UNITS:mm	SHEET SIZE: A4				SCALE:---	DRWN BY PAN
0~3	3~18	18~50	50~120	CHK'D BY FENG	2.50mm Pitch XHB With Lock Type Wire To Board Connector	
±0.12	±0.15	±0.3	±0.5	APPR BY ZHAN	THIRD ANGLE PROJECTION	RHTAY2.50L-T



RHTAY2.50L-T

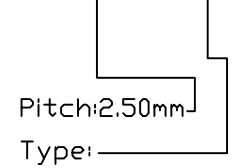
RoHS Compliance



Material:
 Terminal: Phosphor Bronze
 Rating: Tin plated
 Applicable Wires: AWG #22~#28
 Insulation O.D:1.9mm Max

Electrical Characteristics:
 Current Rating: 3.0AMP
 Voltage Rating: 250V AC,DC
 Temperature Range: -25°C~+85°C
 Insulator Resistance: 1000MΩ/Min.
 Withstanding Voltage: 1000V AC/Minute
 Contact Resistance: 10MΩ/Max
 After Environmental Testing:20mΩ Max

Order Information:
RHTAY2.50L-MT



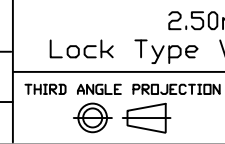
H/FH-Hosing T/MT-Terminal
 S-Straight Male Pin
 R-Right Angle Pin
 RM-SMT Male Pin



NINGBO RHT ELECTRONIC CO.,LTD

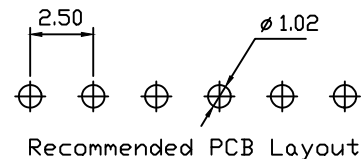
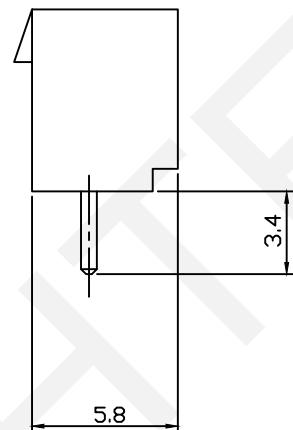
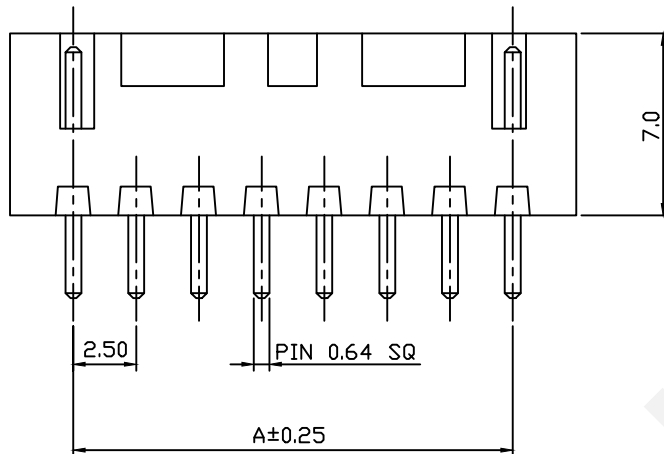
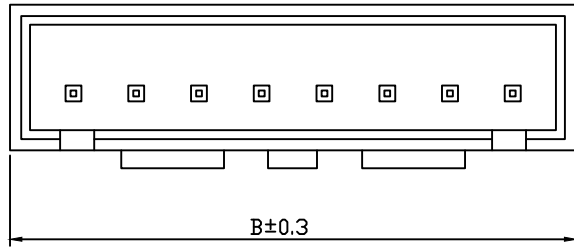
UNITS:mm	SHEET SIZE: A4	SCALE:---	DRWN BY PAN
0~3	3~18	18~50	50~120
±0.12	±0.15	±0.3	±0.5

CHK'D BY FENG
 APPR BY ZHAN



2.50mm Pitch XHB With
 Lock Type Wire To Board Connector
 RHTAY2.50L-MT

RoHS Compliance

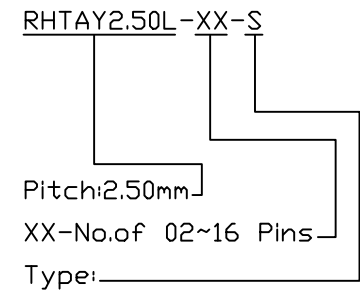


Material:
 Housing: PA66,UL94V-2
 Contact:Brass
 Plating: Tin plated

Electrical Characteristics:
 Current Rating: 3.0AMP
 Voltage Rating: 250V AC,DC
 Temperature Range: -25°C~+85°C
 Insulator Resistance: 1000MΩ/Min.
 Withstanding Voltage: 1000V AC/Minute
 Contact Resistance: 20MΩ/Max

Pin	Dimension(mm)	
	A	B
02	2.50	7.50
03	5.00	10.00
04	7.50	12.50
05	10.00	15.00
06	12.50	17.50
07	15.00	20.00
08	17.50	22.50
09	20.00	25.00
10	22.50	27.50
11	25.00	30.00
12	27.50	32.50
13	30.00	35.00
14	32.50	37.50
15	35.00	40.00
16	37.50	42.50

Order Information:



Pitch:2.50mm
 XX-No.of 02~16 Pins
 Type:
 H/FH-Hosing T/MT-Terminal
 S-Straight Male Pin
 R-Right Angle Pin
 RM-SMT Male Pin

RHTECP NINGBO RHT ELECTRONIC CO.,LTD

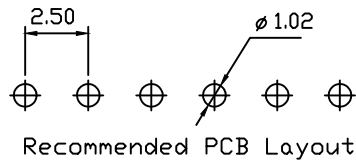
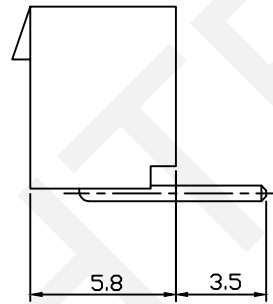
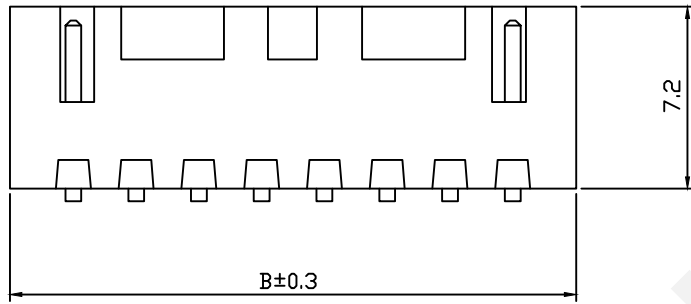
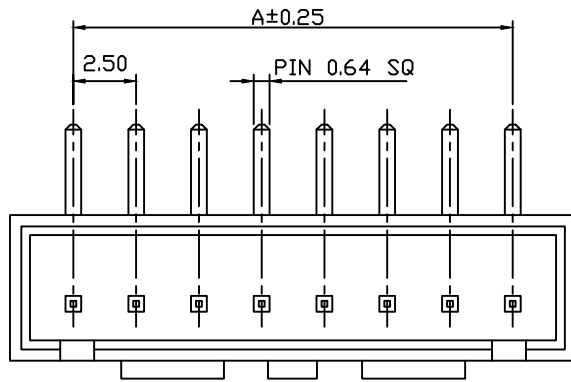
UNITS:mm	SHEET SIZE: A4			SCALE:---	DRWN BY PAN
0~3	3~18	18~50	50~120	CHK'D BY FENG	
±0.12	±0.15	±0.3	±0.5	APPR BY ZHAN	

2.50mm Pitch XHB With
 Lock Type Wire To Board Connector

THIRD ANGLE PROJECTION

RHTAY2.50L-XX-S

RoHS Compliance



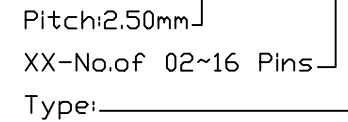
Pin	Dimension(mm)	
	A	B
02	2.50	7.50
03	5.00	10.00
04	7.50	12.50
05	10.00	15.00
06	12.50	17.50
07	15.00	20.00
08	17.50	22.50
09	20.00	25.00
10	22.50	27.50
11	25.00	30.00
12	27.50	32.50
13	30.00	35.00
14	32.50	37.50
15	35.00	40.00
16	37.50	42.50

Material:
Housing: PA66,UL94V-2
Contact:Brass
Plating: Tin plated

Electrical Characteristics:
Current Rating: 3.0AMP
Voltage Rating: 250V AC,DC
Temperature Range: -25°C~+85°C
Insulator Resistance: 1000MΩ/Min.
Withstanding Voltage: 1000V AC/Minute
Contact Resistance: 20MΩ/Max

Order Information:

RHTAY2.50L-XX-R



H/FH-Hosing T/MT-Terminal
S-Straight Male Pin
R-Right Angle Pin
RM-SMT Male Pin

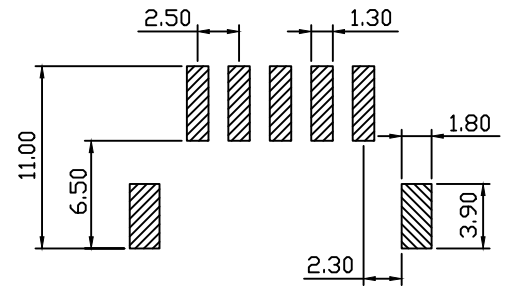
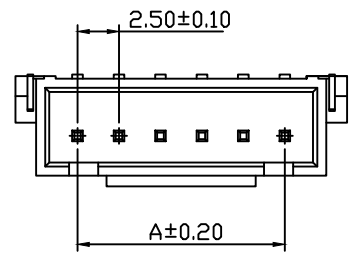
RHTECP NINGBO RHT ELECTRONIC CO.,LTD

UNITS:mm	SHEET SIZE: A4	SCALE:---	DRWN BY PAN
0~3	3~18	18~50	50~120
±0.12	±0.15	±0.3	±0.5

CHK'D BY FENG
APPR BY ZHAN

2.50mm Pitch XHB With
Lock Type Wire To Board Connector
THIRD ANGLE PROJECTION
 RHTAY2.50L-XX-R

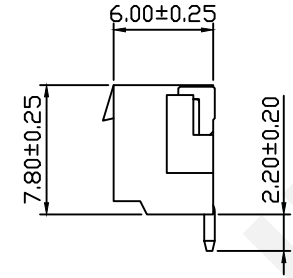
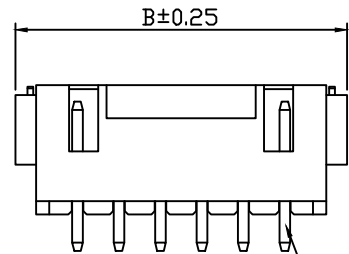
RoHS Compliance



PCB Layout

Pin	Dimension(mm)	
	A	B
02	2.50	10.00
03	5.00	12.50
04	7.50	15.00
05	10.00	17.50
06	12.50	20.00
07	15.00	22.50
08	17.50	25.00
09	20.00	27.50
10	22.50	30.00
11	25.00	32.50
12	27.50	35.00
13	30.00	37.50
14	32.50	40.00
15	35.00	42.50
16	37.50	45.00

Material:
 Housing: PA66,UL94V-0
 Contact:Brass
 Plating: Tin plated
 Electrical Characteristics:
 Current Rating: 3.0AMP
 Voltage Rating: 250V AC,DC
 Temperature Range: -25°C~+85°C
 Insulator Resistance: 500MΩ/Min.
 Withstanding Voltage: 1000V AC/Minute
 Contact Resistance: 20MΩ/Max
 After Environmental Testing: 30mΩ Max



Order Information:

RHTAY2.50L-XX-RM

Pitch:2.50mm

XX-No.of 02~16 Pins

Type:

H/FH-Hosing T/MT-Terminal

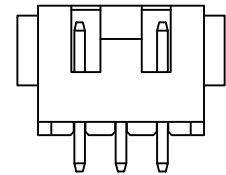
S-Straight Male Pin

R-Right Angle Pin

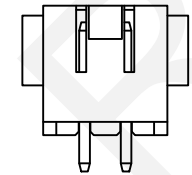
RM-SMT Male Pin

4P~16P

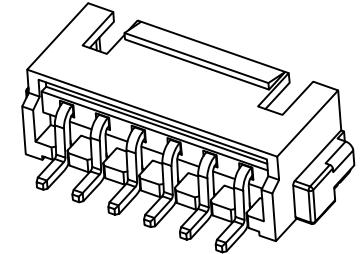
PIN 0.64 SQ



3P



2P

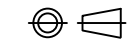


NINGBO RHT ELECTRONIC CO.,LTD

UNITS:mm	SHEET SIZE: A4		SCALE:---	DRWN BY PAN
0~3	3~18	18~50	50~120	CHK'D BY FENG
±0.12	±0.15	±0.3	±0.5	APPR BY ZHAN

2.50mm Pitch XHB With Lock Type Wire To Board Connector

THIRD ANGLE PROJECTION



RHTAY2.50L-XX-RM