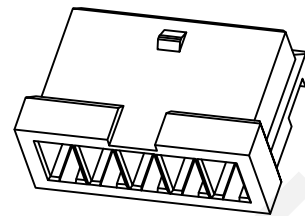
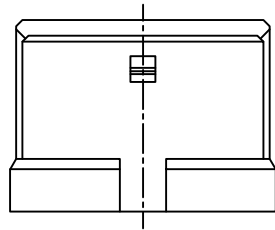
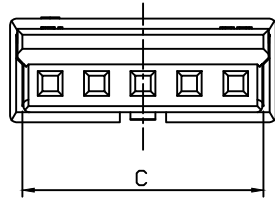
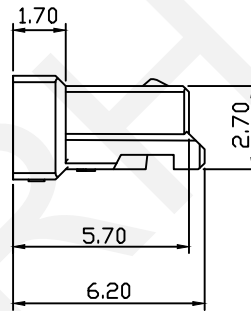
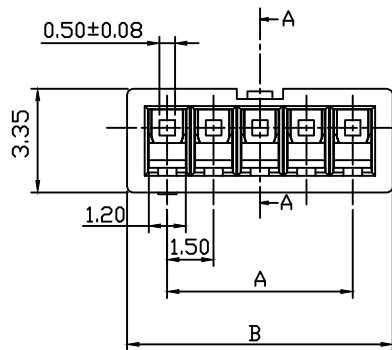


RoHS Compliance



3D View



Pin	Dimension(mm)		
	A	B	C
02	1.50	4.10	3.30
03	3.00	5.60	4.80
04	4.50	7.10	6.30
05	6.00	8.60	7.80
06	7.50	10.10	9.30
07	9.00	11.60	10.80
08	10.50	13.10	12.30
09	12.00	14.60	13.80
10	13.50	16.10	15.30
11	15.00	17.60	16.80
12	16.50	19.10	18.30
13	18.00	20.60	19.80
14	19.50	22.10	21.30
15	21.00	23.60	22.80

Material:  
Housing:PA66 UL94V-0

Electrical Characteristics:  
Current Rating: 2.5A AC,DC  
Voltage Rating: 250V AC,DC  
Temperature Range: -25°C~+85°C  
Insulator Resistance: 1000MΩ/Min.  
Withstand Voltage: 500V AC/Minute  
Contact Resistance: 20MΩ/Max

Order Information

RHTAYL2-1.50-XX-H

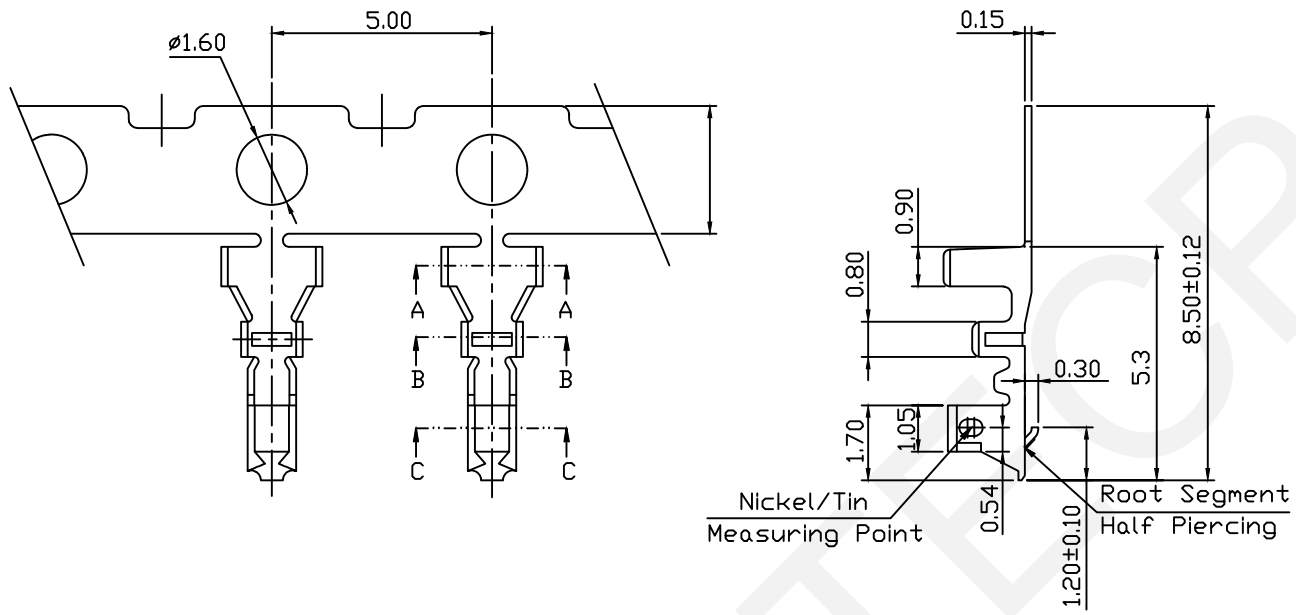
Series No. \_\_\_\_\_  
Pitch:1.50mm \_\_\_\_\_  
XX-No.of 02~15Pin \_\_\_\_\_  
Type: \_\_\_\_\_  
H-Hosing T-Terminal  
VM-Vertical SMT Pin  
RM-Horizontal SMT Pin

NINGBO RHT ELECTRONIC CO.,LTD

UNITS:mm	SHEET SIZE: A4			SCALE:---	DRWN BY PAN
0~3	3~18	18~50	50~120	CHK'D BY FENG	
±0.12	±0.15	±0.3	±0.5	APPR BY ZHAN	

1.50mm Pitch 87439 87421 Type  
Wire to Board Connector  
THIRD ANGLE PROJECTION  
 RHTAYL2-1.50-XX-H

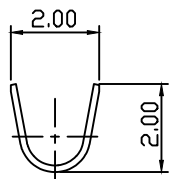
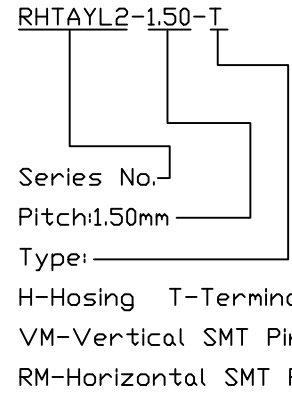
RoHS Compliance



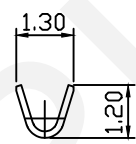
Material:  
 Terminal: Phosphor Bronze  
 Plating: Tin plated Over Nickel  
 Applicable Wires: AWG #24~#28  
 Insulation O.D.: 0.7~1.10mm Max  
 Qty/Reel: 10000 PCS

Electrical Characteristics:  
 Rated Current: 2.5A AC/DC  
 Voltage Rating: 250V AC,DC  
 Temperature Range: -25°C~+85°C  
 Insulator Resistance: 1000MΩ Min  
 Withstand Voltage: 500V AC/Minute  
 Contact Resistance: 20mΩ Max

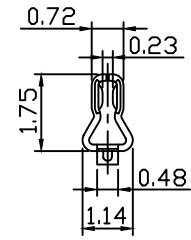
Order Information



A-A



B-B

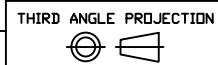


C-C

**RHTECP** NINGBO RHT ELECTRONIC CO.,LTD

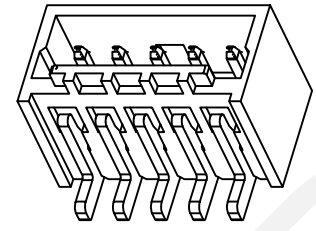
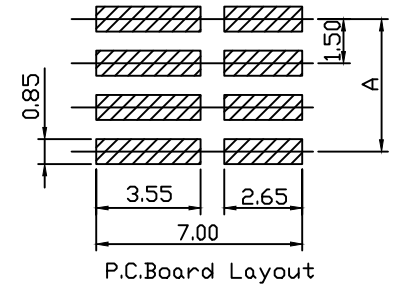
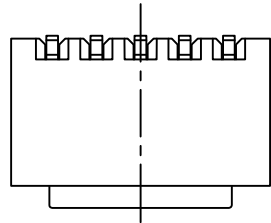
UNITS:mm	SHEET SIZE: A4			SCALE:---	DRWN BY PAN
0~3	3~18	18~50	50~120	CHK'D BY FENG	
±0.12	±0.15	±0.3	±0.5	APPR BY ZHAN	

1.50mm Pitch 87439 87421 Type  
 Wire to Board Connector



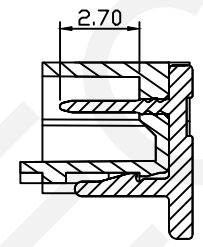
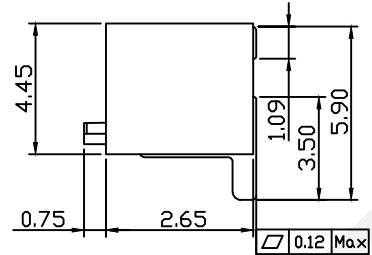
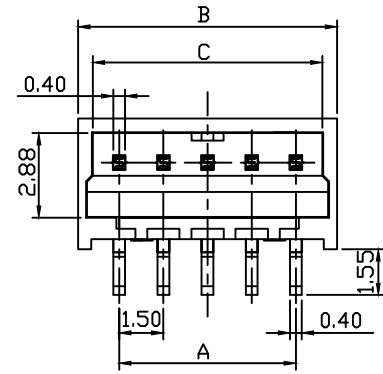
RHTAYL2-1.50-T

RoHS Compliance



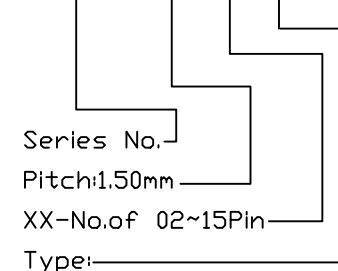
Material:  
 Wafer:PA6T UL94V-0  
 Contact:Brass  
 Plating: Tin plated Over Nickel

Electrical Characteristics:  
 Current Rating: 2.5A AC,DC  
 Voltage Rating: 250V AC,DC  
 Temperature Range: -25°C~+85°C  
 Insulator Resistance: 1000MΩ/Min.  
 Withstand Voltage: 500V AC/Minute  
 Contact Resistance: 20MΩ/Max



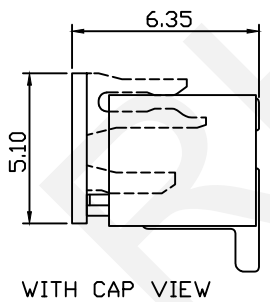
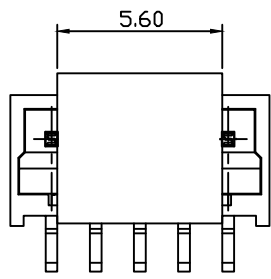
Order Information

RHTAYL2-1.50-XX-VM



H-Hosing T-Terminal  
 VM-Vertical SMT Pin  
 RM-Horizontal SMT Pin

Pin	Dimension(mm)		
	A	B	C
02	1.50	4.30	3.35
03	3.00	5.80	4.85
04	4.50	7.30	6.35
05	6.00	8.80	7.85
06	7.50	10.30	9.35
07	9.00	11.80	10.85
08	10.50	13.30	12.35
09	12.00	14.80	13.85
10	13.50	16.30	15.35
11	15.00	17.80	16.85
12	16.50	19.30	18.35
13	18.00	20.80	19.85
14	19.50	22.30	21.35
15	21.00	23.80	22.85

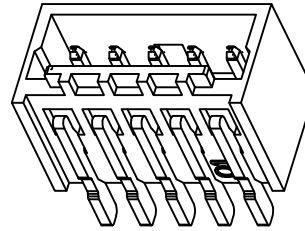
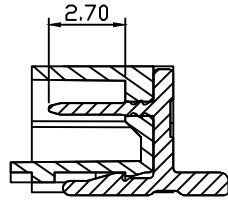
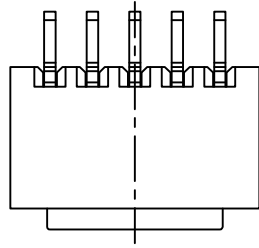


**RHTECP** NINGBO RHT ELECTRONIC CO.,LTD

UNITS:mm	SHEET SIZE: A4			SCALE:---	DRWN BY PAN
0~3	3~18	18~50	50~120	CHK'D BY FENG	
±0.12	±0.15	±0.3	±0.5	APPR BY ZHAN	

1.50mm Pitch 87439 87421 Type  
 Wire to Board Connector  
 THIRD ANGLE PROJECTION  
 RHTAYL2-1.50-XX-VM

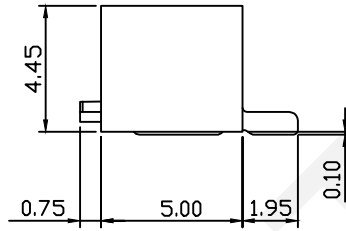
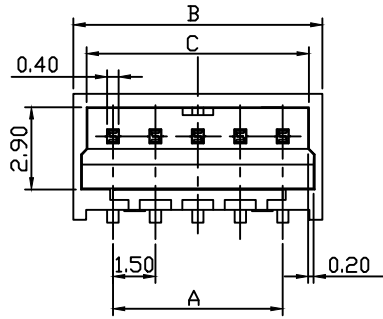
RoHS Compliance



3D View

Material:  
 Wafer:PA6T UL94V-0  
 Contact:Brass  
 Plating: Tin plated Over Nickel

Electrical Characteristics:  
 Current Rating: 2.5A AC,DC  
 Voltage Rating: 250V AC,DC  
 Temperature Range: -25°C~+85°C  
 Insulator Resistance: 1000MΩ/Min.  
 Withstand Voltage: 500V AC/Minute  
 Contact Resistance: 20MΩ/Max



Pin	Dimension(mm)		
	A	B	C
02	1.50	4.30	3.35
03	3.00	5.80	4.85
04	4.50	7.30	6.35
05	6.00	8.80	7.85
06	7.50	10.30	9.35
07	9.00	11.80	10.85
08	10.50	13.30	12.35
09	12.00	14.80	13.85
10	13.50	16.30	15.35
11	15.00	17.80	16.85
12	16.50	19.30	18.35
13	18.00	20.80	19.85
14	19.50	22.30	21.35
15	21.00	23.80	22.85

Order Information

RHTAYL2-1.50-XX-RM

Series No. \_\_\_\_\_

Pitch:1.50mm \_\_\_\_\_

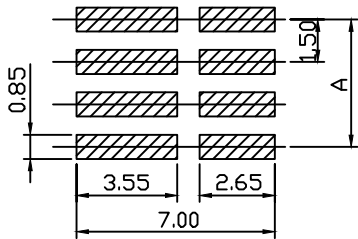
XX-No.of 02~15Pin \_\_\_\_\_

Type: \_\_\_\_\_

H-Hosing T-Terminal

VM-Vertical SMT Pin

RM-Horizontal SMT Pin



P.C.Board Layout



NINGBO RHT ELECTRONIC CO.,LTD

UNITS:mm	SHEET SIZE: A4	SCALE:---	DRWN BY PAN
0~3	3~18	18~50	50~120
±0.12	±0.15	±0.3	±0.5
			CHK'D BY FENG
			APPR BY ZHAN

1.50mm Pitch 87439 87421 Type Wire to Board Connector	
THIRD ANGLE PROJECTION 	RHTAYL2-1.50-XX-RM