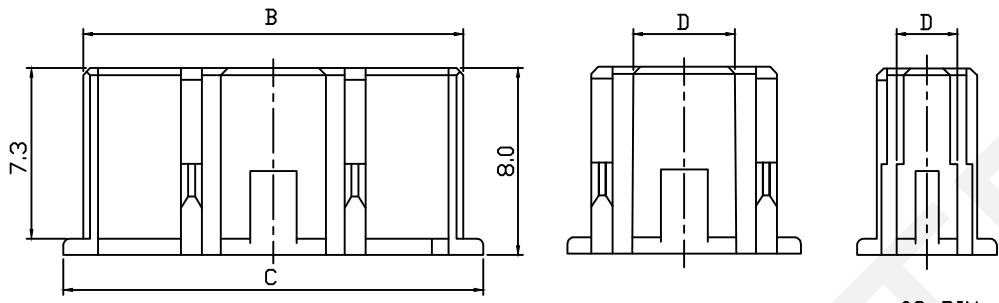
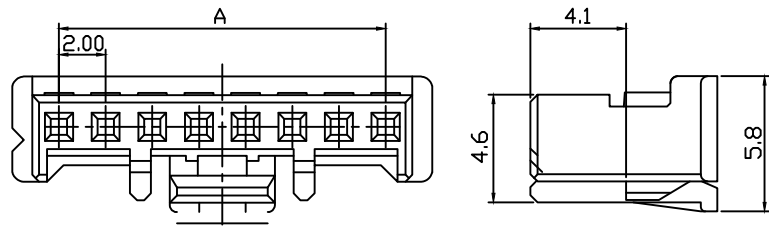


RoHS Compliance



Pin	Dimension(mm)				
	A	B	C	D	E
02	2.00	4.30	6.00	2.60	4.40
03	4.00	6.30	8.00	3.80	6.40
04	6.00	8.30	10.00	10.00	8.40
05	8.00	10.30	12.00	12.00	7.90
06	10.00	12.30	14.00	14.00	7.90
07	12.00	14.30	16.00	16.00	7.90
08	14.00	16.30	18.00	18.00	7.90
09	16.00	18.30	20.00	20.00	7.90
10	18.00	20.30	22.00	22.00	14.50
11	20.00	22.30	24.00	24.00	14.50
12	22.00	24.30	26.00	26.00	14.50
13	24.00	26.30	28.00	28.00	14.50
14	26.00	28.30	30.00	30.00	14.50
15	28.00	30.30	32.00	32.00	14.50

Material:
Housing: PA66,UL94V-0

Electrical Characteristics:
Rated Current : 3.0AMP
Voltage Rating : 250V AC,DC
Temperature Range: -40°C~+105°C
Insulator Resistance: 1000MΩ/Min.
Withstand Voltage: 800V AC/DC
Contact Resistance: 10MΩ/Max

Order Information:
RHTAYX200-XX-H

Pitch: 2.00mm
XX-No. of 02~15 Pins

Type: _____

T-Terminal H-Hosing
S-Straight Male Pin
R-Right Angle Male Pin
VM-Vertical SMT Pin
RM-Horizontal SMT Pin

RHTECP NINGBO RHT ELECTRONIC CO.,LTD

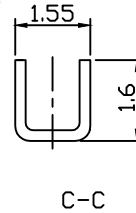
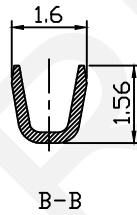
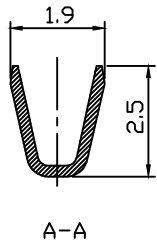
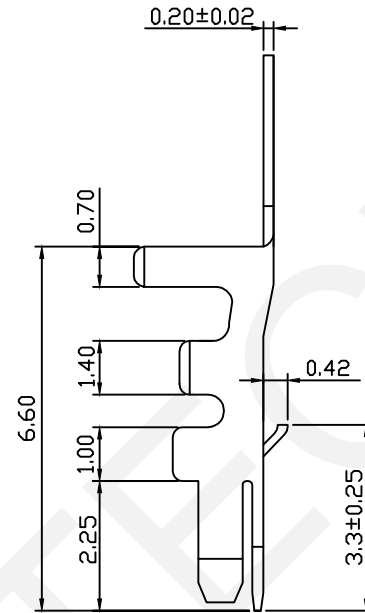
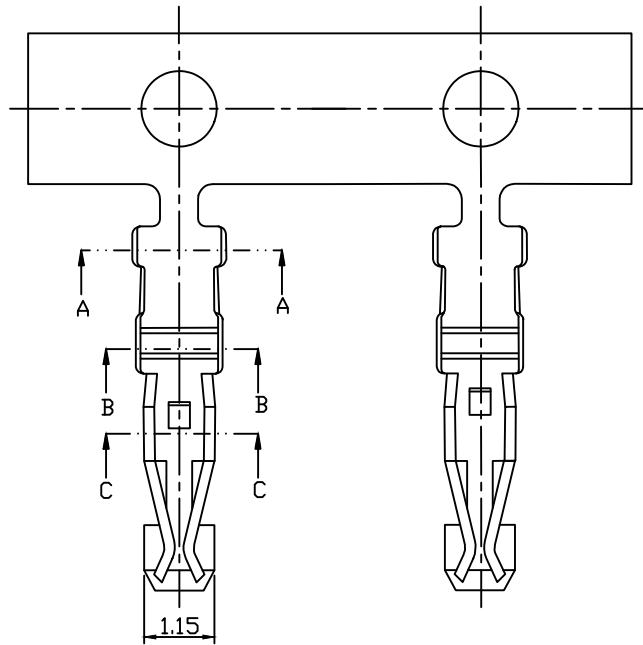
UNITS:mm	SHEET SIZE: A4	SCALE:---	DRWN BY PAN
0~3	3~18	18~50	50~120
±0.12	±0.15	±0.3	±0.5
CHK'D BY FENG		APPR BY ZHAN	

2.00mm Pitch PA With Lock Wire To Board Connector

THIRD ANGLE PROJECTION

RHTAYX200-XX-H

RoHS Compliance



Material:

Terminal: Phosphor Bronze

Plating: Tin Plated Over Nickel

Applicable Wires: AWG #22~#26

Insulation Dia: 1.50mm Max

Electrical Characteristics:

Rated Current : 3.0AMP

Voltage Rating : 250V AC,DC

Temperature Range: -40°C~+105°C

Insulator Resistance: 1000MΩ/Min.

Withstand Voltage: 800V AC/DC

Contact Resistance: 10MΩ/Max

Order Information:

RHTAYX200-T

Pitch: 2.00mm

Type:

T-Terminal H-Hosing

S-Straight Male Pin

R-Right Angle Male Pin

VM-Vertical SMT Pin

RM-Horizontal SMT Pin

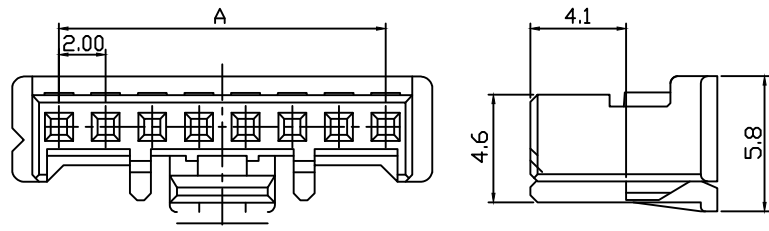
RHTECP NINGBO RHT ELECTRONIC CO.,LTD

UNITS:mm	SHEET SIZE: A4	SCALE:---	DRWN BY PAN
0~3	3~18	18~50	50~120
±0.12	±0.15	±0.3	±0.5

CHK'D BY FENG
APPR BY ZHAN

2.00mm Pitch PA With Lock Wire To Board Connector
THIRD ANGLE PROJECTION
RHTAYX200-T

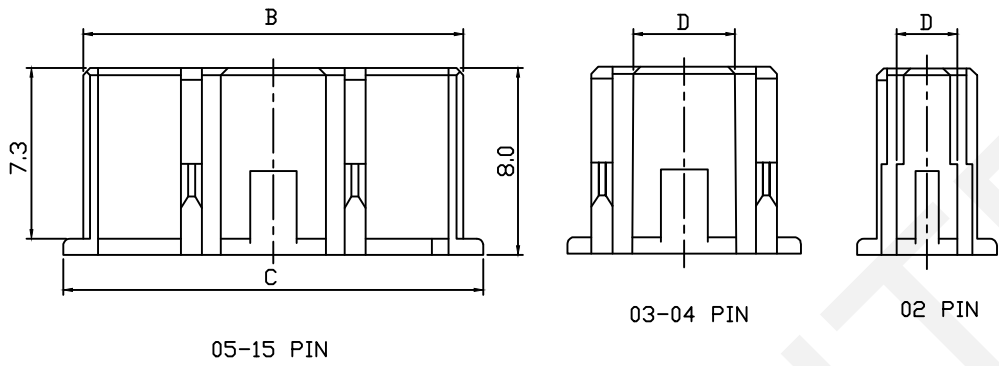
RoHS Compliance



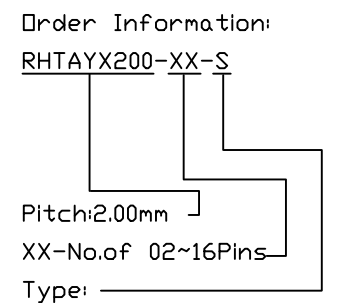
Material:
 Housing: PA9T,UL94V-0
 Contact:Brass
 Plating: Tin Plated Over Nickel

Electrical Characteristics:
 Rated Current : 3.0AMP
 Voltage Rating : 250V AC,DC
 Temperature Range: -40°C~+105°C
 Insulator Resistance: 1000MΩ/Min.
 Withstand Voltage: 800V AC/DC
 Contact Resistance: 10MΩ/Max

Pin	Dimension(mm)				
	A	B	C	D	E
02	8.00	2.00	4.50	---	---
03	10.00	4.00	6.50	1.00	---
04	12.00	6.00	8.50	5.00	---
05	14.00	8.00	10.50	5.00	7.00
06	16.00	10.00	12.50	5.00	7.00
07	18.00	12.00	14.50	7.00	7.00
08	20.00	14.00	16.50	9.00	7.00
09	22.00	16.00	18.50	11.00	7.00
10	24.00	18.00	20.50	13.00	13.60
11	26.00	20.00	22.50	15.00	13.60
12	28.00	22.00	24.50	17.00	13.60
13	30.00	24.00	26.50	19.00	13.60
14	32.00	26.00	28.50	21.00	13.60
15	34.00	28.00	30.50	23.00	13.60
16	36.00	30.00	32.50	25.00	13.60



03-04 PIN 02 PIN



Order Information:
 RHTAYX200-XX-S
 Pitch:2.00mm
 XX-No.of 02~16Pins
 Type: _____
 T-Terminal H-Hosing
 S-Straight Male Pin
 R-Right Angle Male Pin
 VM-Vertical SMT Pin
 RM-Horizontal SMT Pin

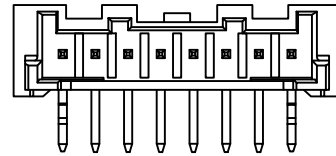
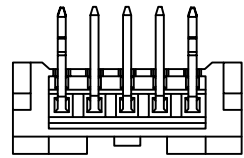
RHTECP NINGBO RHT ELECTRONIC CO.,LTD

UNITS:mm	SHEET SIZE: A4	SCALE:---	DRWN BY PAN
0~3	3~18	18~50	50~120
±0.12	±0.15	±0.3	±0.5
			CHK'D BY FENG
			APPR BY ZHAN

2.00mm Pitch PA With Lock Wire To Board Connector
 THIRD ANGLE PROJECTION

 RHTAYX200-XX-S

RoHS Compliance



Pin	Dimension(mm)				
	A	B	C	D	E
02	8.00	2.00	4.50	---	---
03	10.00	4.00	6.50	1.00	---
04	12.00	6.00	8.50	5.00	---
05	14.00	8.00	10.50	5.00	7.00
06	16.00	10.00	12.50	5.00	7.00
07	18.00	12.00	14.50	7.00	7.00
08	20.00	14.00	16.50	9.00	7.00
09	22.00	16.00	18.50	11.00	7.00
10	24.00	18.00	20.50	13.00	13.60
11	26.00	20.00	22.50	15.00	13.60
12	28.00	22.00	24.50	17.00	13.60
13	30.00	24.00	26.50	19.00	13.60
14	32.00	26.00	28.50	21.00	13.60
15	34.00	28.00	30.50	23.00	13.60

Material:

Housing: PA9T,UL94V-0

Contact:Brass

Plating: Tin Plated Over Nickel

Electrical Characteristics:

Rated Current : 3.0AMP

Voltage Rating : 250V AC,DC

Temperature Range: -40°C~+105°C

Insulator Resistance: 1000MΩ/Min.

Withstand Voltage: 800V AC/DC

Contact Resistance: 10MΩ/Max

Order Information:

RHTAYX200-XX-R

Pitch:2.00mm

XX-No.of 02~15Pins

Type:

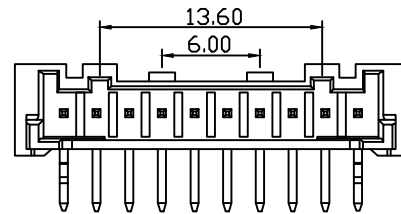
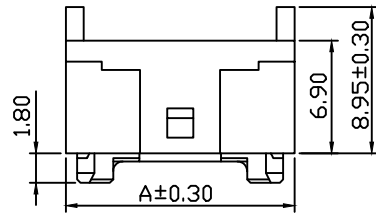
T-Terminal H-Hosing

S-Straight Male Pin

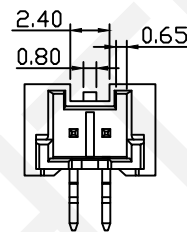
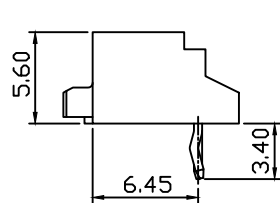
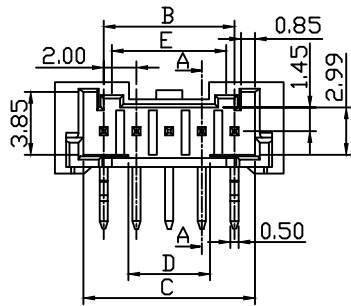
R-Right Angle Male Pin

VM-Vertical SMT Pin

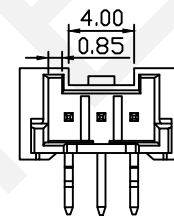
RM-Horizontal SMT Pin



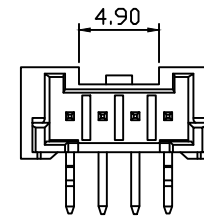
09P-16P View



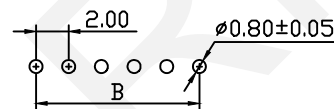
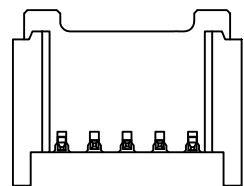
02P View



03P View



04P View



Recommended PCB Layout



NINGBO RHT ELECTRONIC CO.,LTD

UNITS:mm

SHEET SIZE: A4

SCALE:---

DRWN BY PAN

2.00mm Pitch PA With Lock Wire To Board Connector

0~3

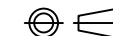
3~18

18~50

50~120

CHK'D BY FENG

THIRD ANGLE PROJECTION



RHTAYX200-XX-R

±0.12

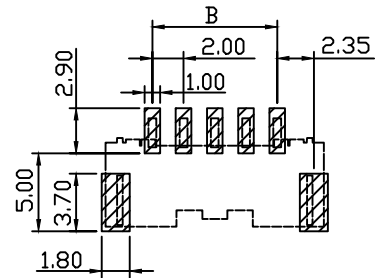
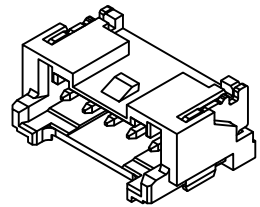
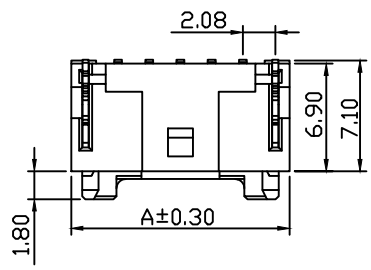
±0.15

±0.3

±0.5

APPR BY ZHAN

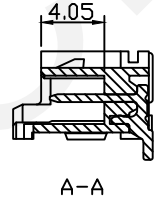
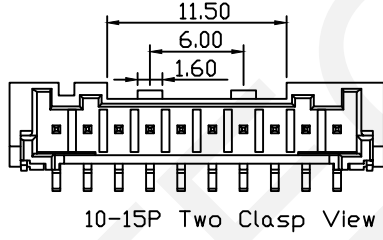
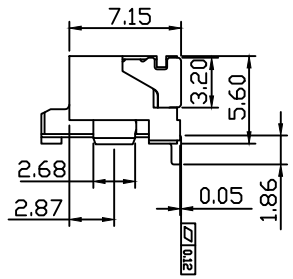
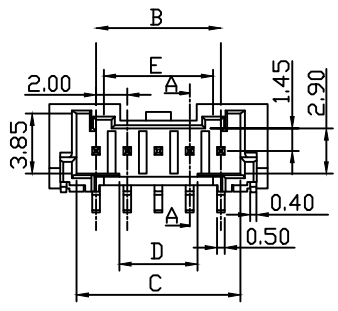
RoHS Compliance



Recommended PCB Layout
Total Tolerance: ±0.05mm

Material:
Housing: PA9T,UL94V-0
Contact: Brass Tin Plated Over Nickel

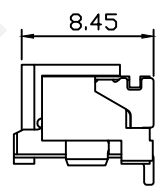
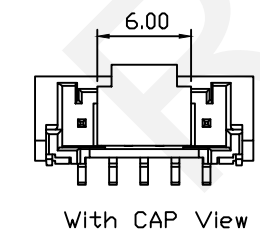
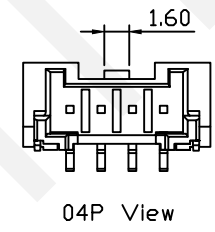
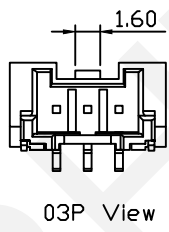
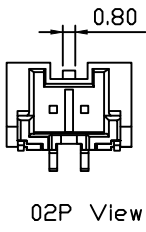
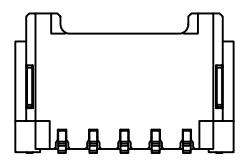
Electrical Characteristics:
Rated Current : 3.0AMP
Voltage Rating : 250V AC,DC
Temperature Range: -40°C~+105°C
Insulator Resistance: 1000MΩ/Min.
Withstand Voltage: 800V AC/DC
Contact Resistance: 10MΩ/Max



Pin	Dimension(mm)				
	A	B	C	D	E
02	8.00	2.00	4.50	---	---
03	10.00	4.00	6.50	1.00	---
04	12.00	6.00	8.50	5.00	---
05	14.00	8.00	10.50	5.00	7.00
06	16.00	10.00	12.50	5.00	7.00
07	18.00	12.00	14.50	7.00	7.00
08	20.00	14.00	16.50	9.00	7.00
09	22.00	16.00	18.50	11.00	7.00
10	24.00	18.00	20.50	13.00	13.60
11	26.00	20.00	22.50	15.00	13.60
12	28.00	22.00	24.50	17.00	13.60
13	30.00	24.00	26.50	19.00	13.60
14	32.00	26.00	28.50	21.00	13.60
15	34.00	28.00	30.50	23.00	13.60

Order Information:
RHTAYX200-XX-VM

Pitch: 2.00mm
XX-No.of 02~15Pins
Type: _____
T-Terminal H-Hosing
S-Straight Male Pin
R-Right Angle Male Pin
VM-Vertical SMT Pin
RM-Horizontal SMT Pin

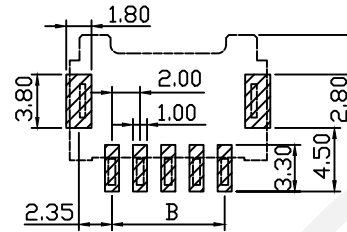
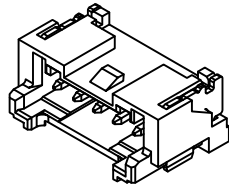
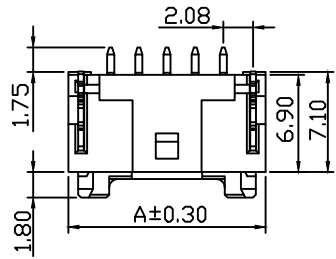


RHTECP NINGBO RHT ELECTRONIC CO.,LTD

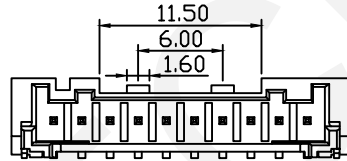
UNITS:mm	SHEET SIZE: A4		SCALE:---		DRWN BY PAN
0~3	3~18	18~50	50~120	CHK'D BY FENG	THIRD ANGLE PROJECTION
±0.12	±0.15	±0.3	±0.5	APPR BY ZHAN	

2.00mm Pitch PA With Lock Wire To Board Connector
RHTAYX200-XX-VM

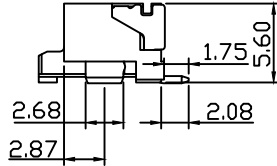
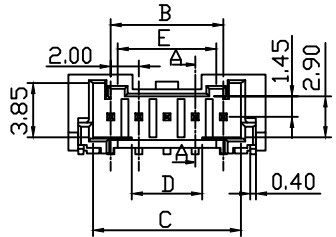
RoHS Compliance



Recommended PCB Layout
Total Tolerance: ±0.05mm



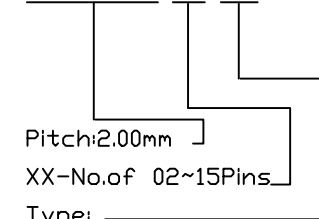
10-15P Two Clasp View



Material:
Housing: PA9T,UL94V-0
Contact: Brass Tin Plated Over Nickel

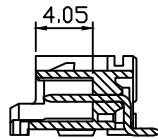
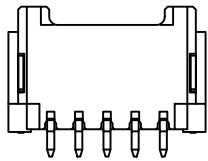
Electrical Characteristics:
Rated Current : 3.0AMP
Voltage Rating : 250V AC,DC
Temperature Range: -40°C~+105°C
Insulator Resistance: 1000MΩ/Min.
Withstand Voltage: 800V AC/DC
Contact Resistance: 10MΩ/Max

Order Information:
RHTAYX200-XX-RM

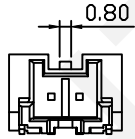


Type: _____
T-Terminal H-Hosing
S-Straight Male Pin
R-Right Angle Male Pin
VM-Vertical SMT Pin
RM-Horizontal SMT Pin

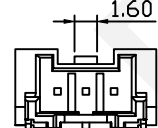
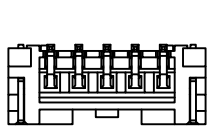
Pin	Dimension(mm)				
	A	B	C	D	E
02	8.00	2.00	4.50	---	---
03	10.00	4.00	6.50	1.00	---
04	12.00	6.00	8.50	5.00	---
05	14.00	8.00	10.50	5.00	7.00
06	16.00	10.00	12.50	5.00	7.00
07	18.00	12.00	14.50	7.00	7.00
08	20.00	14.00	16.50	9.00	7.00
09	22.00	16.00	18.50	11.00	7.00
10	24.00	18.00	20.50	13.00	13.60
11	26.00	20.00	22.50	15.00	13.60
12	28.00	22.00	24.50	17.00	13.60
13	30.00	24.00	26.50	19.00	13.60
14	32.00	26.00	28.50	21.00	13.60
15	34.00	28.00	30.50	23.00	13.60



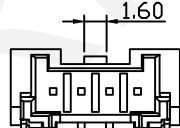
A-A



02P View



03P View



04P View



NINGBO RHT ELECTRONIC CO.,LTD

UNITS:mm	SHEET SIZE: A4	SCALE:---	DRWN BY PAN
0~3	3~18	18~50	50~120
±0.12	±0.15	±0.3	±0.5
CHK'D BY FENG		APPR BY ZHAN	

2.00mm Pitch PA With Lock
Wire To Board Connector
THIRD ANGLE PROJECTION
 RHTAYX200-XX-RM