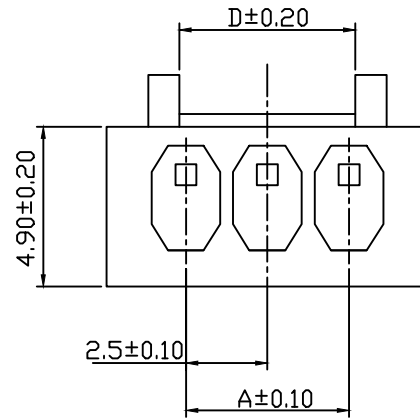
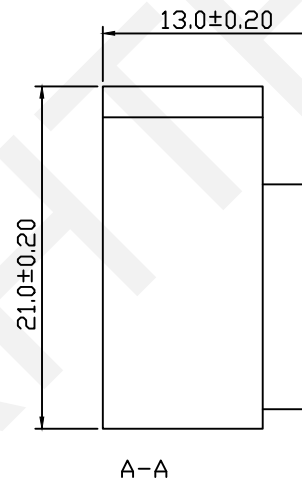
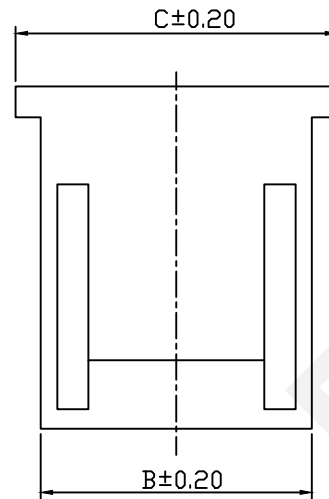


RoHS Compliance



Pin	Dimensions(mm)			
	A	B	C	D
02	2.50	5.90	7.40	2.90
03	5.00	8.40	10.00	5.40
04	7.50	10.90	12.50	7.90



Material:

Housing: PA66 UL94V-2

Electrical Characteristics:

Rated Current: 2.0AMP

Voltage Rating: 250V AC,DC

Temperature Range: -25°C~+85°C

Insulator Resistance: 800MΩ/Min.

Withstanding Voltage: 500V AC/Minute

Contact Resistance: 20MΩ/Max

Order Information:

RHTAYM1-2.54-XX-FH

Pitch:2.50mm

XX-No.of 02~04pins

Type:

MH-Male Hosing FH-Female Hosing

MT-Male Terminal FT-Female Terminal

S-Straight Male Pin R-Right Angle Male Pin

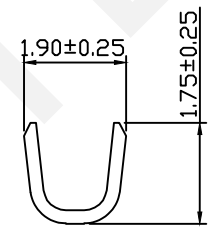
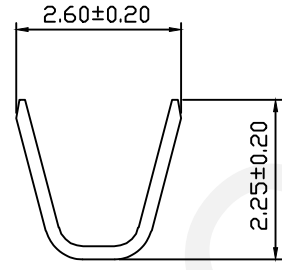
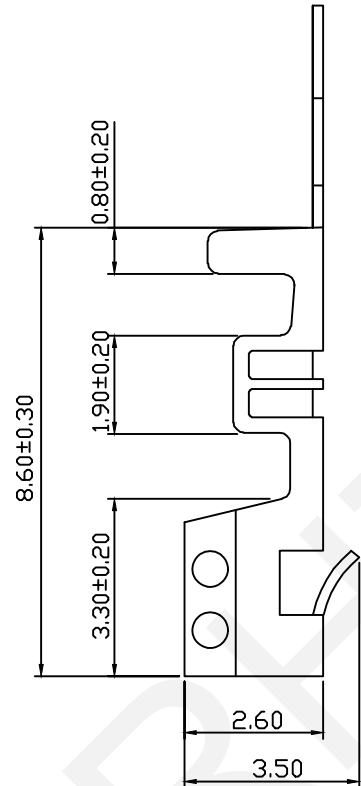
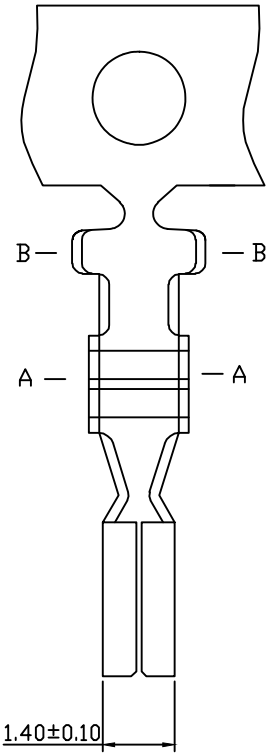
**RHTECP** NINGBO RHT ELECTRONIC CO.,LTD

UNITS:mm	SHEET SIZE: A4	SCALE:---	DRWN BY PAN
0~3	3~18	18~50	50~120
±0.12	±0.15	±0.3	±0.5

CHK'D BY FENG  
APPR BY ZHAN

2.50mm Pitch 5102 5240  
Wire To Wire Connector  
THIRD ANGLE PROJECTION  
RHTAYM1-2.54-XX-FH

RoHS Compliance



Material:  
 Terminal :Brass  
 Rating: Tin Plated  
 Applicable Wires:AWG#22~#28  
 Insulation O.D:1.80mm  
 Thickness:0.20mm  
 Qty/Reel:7000 pcs

Electrical Characteristics:  
 Rated Current: 2.0AMP  
 Voltage Rating: 250V AC,DC  
 Temperature Range: -25°C~+85°C  
 Insulator Resistance: 800MΩ/Min.  
 Withstanding Voltage: 500V AC/Minute  
 Contact Resistance: 20MΩ/Max

Order Information:  
 RHTAYM1-2.54-FT

Pitch:2.50mm

Type: \_\_\_\_\_

MH-Male Hosing FH-Female Hosing  
 MT-Male Terminal FT-Female Terminal  
 S-Straight Male Pin R-Right Angle Male Pin



NINGBO RHT ELECTRONIC CO.,LTD

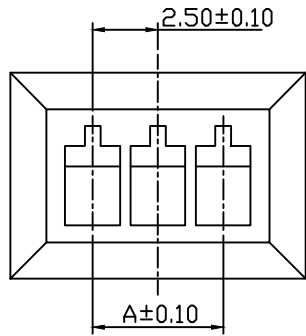
UNITS:mm	SHEET SIZE: A4		SCALE:---	DRWN BY PAN
0~3	3~18	18~50	50~120	CHK'D BY FENG
±0.12	±0.15	±0.3	±0.5	APPR BY ZHAN

2.50mm Pitch 5102 5240  
 Wire To Wire Connector

THIRD ANGLE PROJECTION

RHTAYM1-2.54-FT

RoHS Compliance



Pin	Dimensions(mm)		
	A	B	C
02	2.50	5.90	8.70
03	5.00	8.40	11.20
04	7.50	10.90	13.70

Material:

Housing: PA66 UL94V-2

Electrical Characteristics:

Rated Current: 2.0AMP

Voltage Rating: 250V AC,DC

Temperature Range: -25°C~+85°C

Insulator Resistance: 800MΩ/Min.

Withstanding Voltage: 500V AC/Minute

Contact Resistance: 20MΩ/Max

Order Information:

RHTAYM1-2.54-XX-MH

Pitch: 2.50mm

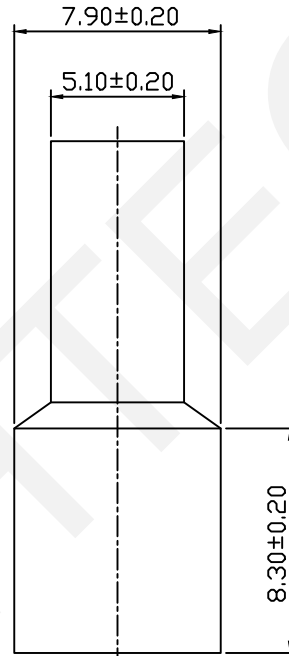
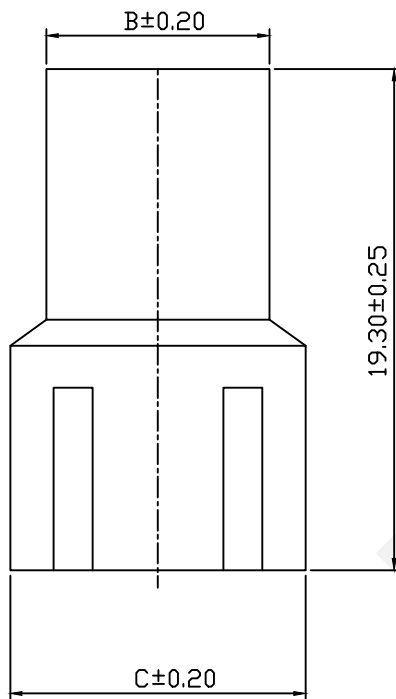
XX-No. of 02~04 pins

Type:

MH-Male Hosing FH-Female Hosing

MT-Male Terminal FT-Female Terminal

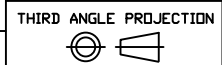
S-Straight Male Pin R-Right Angle Male Pin



UNITS:mm	SHEET SIZE: A4				SCALE:---
0~3	3~18	18~50	50~120		
±0.12	±0.15	±0.3	±0.5		

DRWN BY PAN
CHK'D BY FENG
APPR BY ZHAN

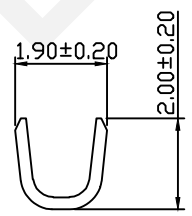
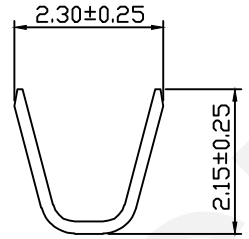
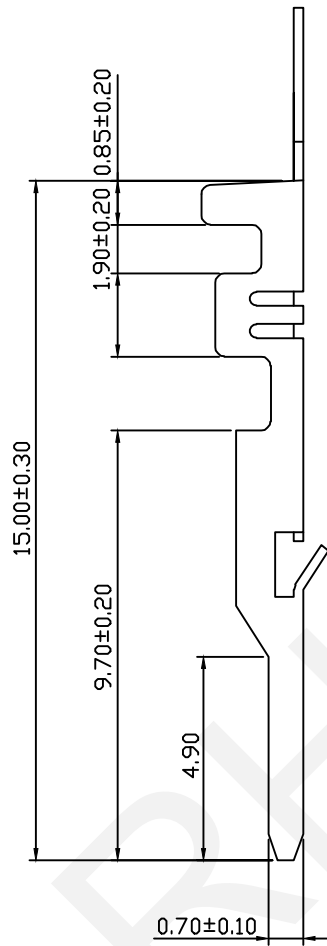
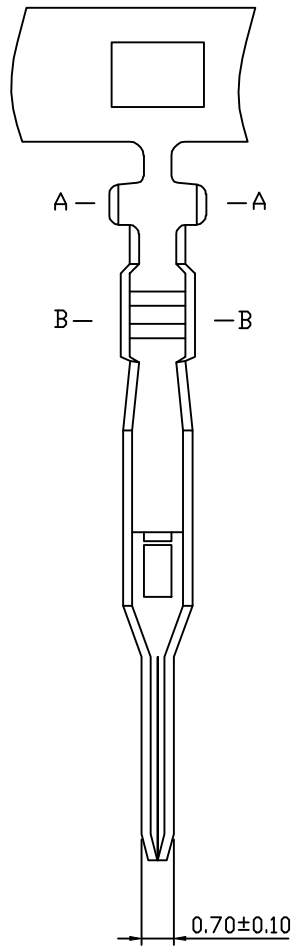
2.50mm Pitch 5102 5240  
Wire To Wire Connector



RHTAYM1-2.54-XX-MH

**RHTECP** NINGBO RHT ELECTRONIC CO.,LTD

RoHS Compliance

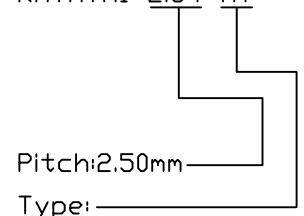


Material:  
 Terminal :Brass  
 Rating: Tin Plated  
 Applicable Wires:AWG#22~#28  
 Insulation O.D:1.80mm  
 Thickness:0.20mm  
 Qty/Reel:10000 pcs

Electrical Characteristics:  
 Rated Current: 2.0AMP  
 Voltage Rating: 250V AC,DC  
 Temperature Range: -25°C~+85°C  
 Insulator Resistance: 800MΩ/Min.  
 Withstanding Voltage: 500V AC/Minute  
 Contact Resistance: 20MΩ/Max

Order Information:

RHTAYM1-2.54-MT



MH-Male Hosing FH-Female Hosing  
 MT-Male Terminal FT-Female Terminal  
 S-Straight Male Pin R-Right Angle Male Pin

**RHTECP** NINGBO RHT ELECTRONIC CO.,LTD

UNITS:mm	SHEET SIZE: A4			SCALE:---	DRWN BY PAN
0~3	3~18	18~50	50~120	CHK'D BY FENG	
±0.12	±0.15	±0.3	±0.5	APPR BY ZHAN	

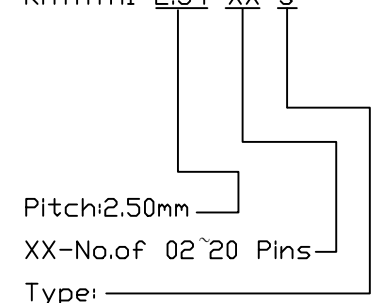
2.50mm Pitch 5102 5240  
 Wire To Wire Connector  
 THIRD ANGLE PROJECTION  
 RHTAYM1-2.54-MT

RoHS Compliance

Material:  
 Housing: PA66 UL94V-0  
 Contact :Brass  
 Plating : Bright Tin Plating

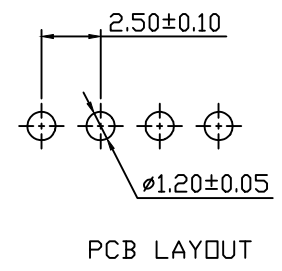
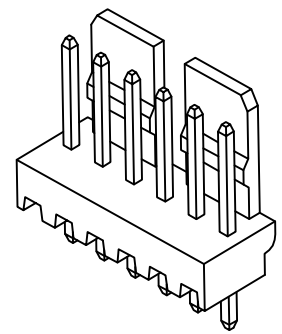
Electrical Characteristics:  
 Rated Current: 3.0AMP  
 Voltage Rating: 250V AC,DC  
 Temperature Range: -25°C~+85°C  
 Insulator Resistance: 1000MΩ/Min.  
 Withstanding Voltage: 1500V AC/Minute  
 Contact Resistance: 20MΩ/Max  
 After Environmental Testing:40mΩ Max

Order Information:  
 RHTAYM1-2.54-XX-S

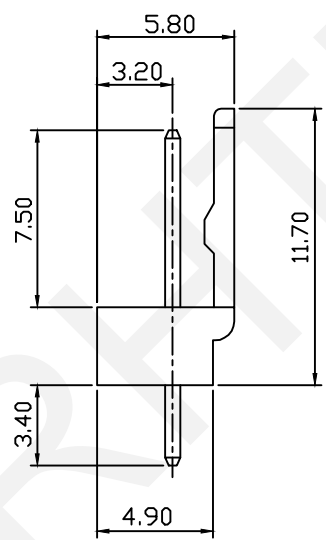
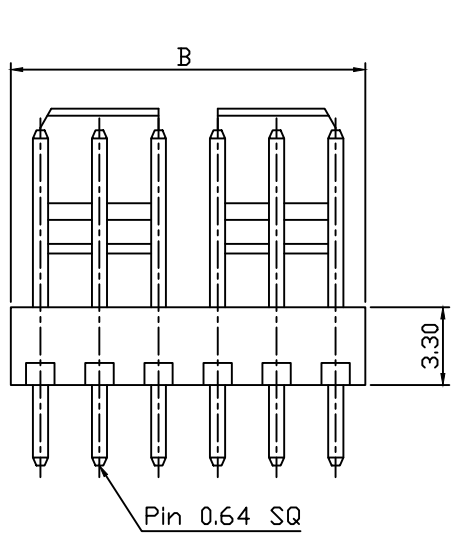
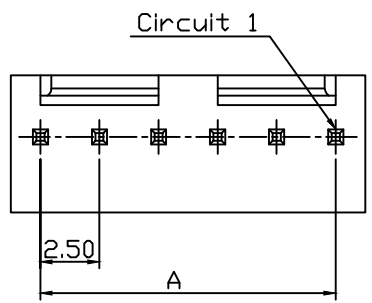


Type: \_\_\_\_\_  
 MH-Male Hosing FH-Female Hosing  
 MT-Male Terminal FT-Female Terminal  
 S-Straight Male Pin  
 R-Right Angle Male Pin

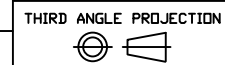
Pin	Dimension(mm)	
	A	B
02	2.50	5.00
03	5.00	7.50
04	7.50	10.00
05	10.00	12.50
06	12.50	15.00
07	15.00	17.50
08	17.50	20.00
09	20.00	22.50
10	22.50	25.00
11	25.00	27.50
12	27.50	30.00
13	30.00	32.50
14	32.50	35.00
15	35.00	37.50
16	37.50	40.00
17	40.00	42.50
18	42.50	45.00
19	45.00	47.50
20	47.50	50.00



PCB LAYOUT



UNITS:mm	SHEET SIZE: A4	SCALE:---	DRWN BY PAN
0~3	3~18	18~50	50~120
±0.12	±0.15	±0.3	±0.5
CHK'D BY FENG		APPR BY ZHAN	

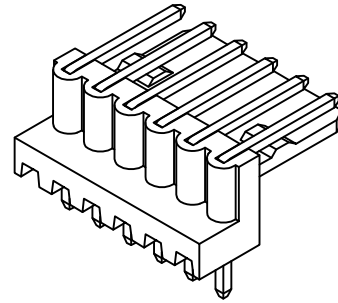
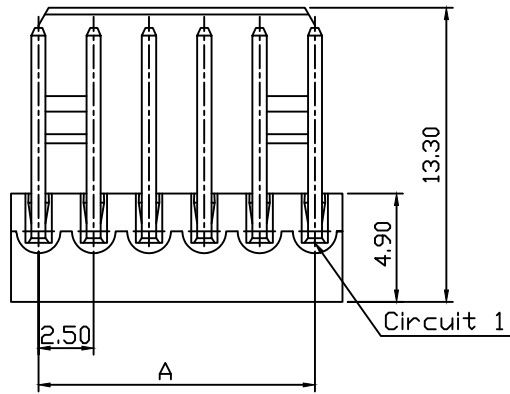


RHTAYM1-2.54-XX-S

**RHTECP** NINGBO RHT ELECTRONIC CO.,LTD

2.50mm Pitch 5102 5240  
 Wire To Wire Connector

RoHS Compliance



Pin	Dimension(mm)	
	A	B
02	2.50	5.00
03	5.00	7.50
04	7.50	10.00
05	10.00	12.50
06	12.50	15.00
07	15.00	17.50
08	17.50	20.00
09	20.00	22.50
10	22.50	25.00
11	25.00	27.50
12	27.50	30.00
13	30.00	32.50
14	32.50	35.00
15	35.00	37.50
16	37.50	40.00
17	40.00	42.50
18	42.50	45.00
19	45.00	47.50
20	47.50	50.00

Material:

Housing: PA66 UL94V-0

Contact :Brass

Plating : Bright Tin Plating

Electrical Characteristics:

Rated Current: 3.0AMP

Voltage Rating: 250V AC,DC

Temperature Range: -25°C~+85°C

Insulator Resistance: 1000MΩ/Min.

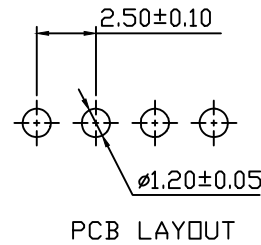
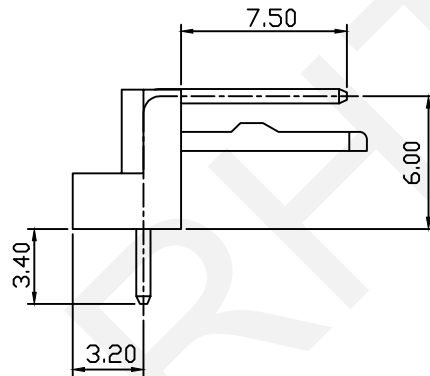
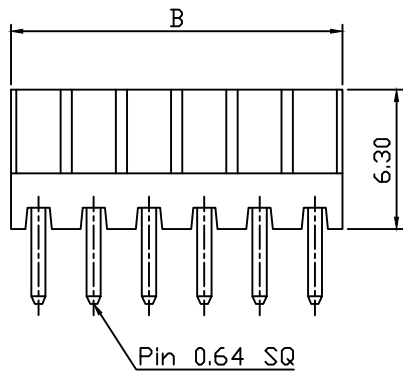
Withstanding Voltage: 1500V AC/Minute

Contact Resistance: 20MΩ/Max

After Environmental Testing:40mΩ Max

Order Information:

RHTAYM1-2.54-XX-R



Pitch:2.50mm

XX-No.of 02~20pins

Type:

MH-Male Hosing FH-Female Hosing

MT-Male Terminal FT-Female Terminal

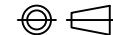
S-Straight Male Pin

R-Right Angle Male Pin

**RHTECP** NINGBO RHT ELECTRONIC CO.,LTD

UNITS:mm	SHEET SIZE: A4	SCALE:---	DRWN BY PAN
0~3	3~18	18~50	50~120
±0.12	±0.15	±0.3	±0.5
			CHK'D BY FENG
			APPR BY ZHAN

THIRD ANGLE PROJECTION



2.50mm Pitch 5102 5240  
Wire To Wire Connector

RHTAYM1-2.54-XX-R