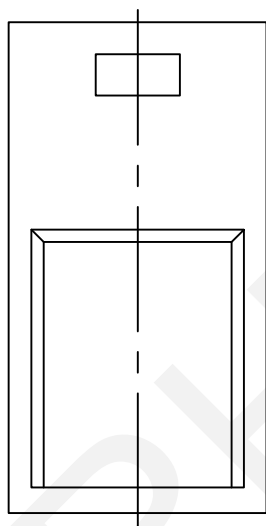
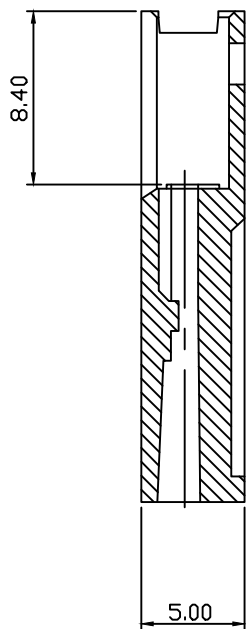
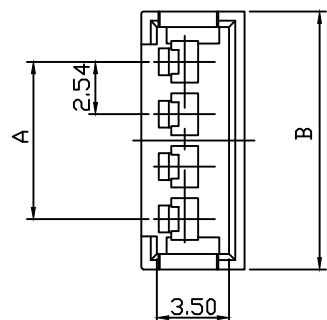


RoHS Compliance



Pin	Dimensions (mm)	
	A	B
02	2.54	7.42
03	5.08	9.96
04	7.62	12.50
05	10.16	15.04
06	12.70	17.58
07	15.24	20.12
08	17.78	22.66
09	20.32	25.20
10	22.86	27.74
11	25.40	30.28
12	27.94	32.82
13	30.48	35.36
14	33.02	37.90
15	35.56	40.44
16	38.10	42.98
17	40.64	45.52
18	43.18	48.06
19	45.72	50.60
20	48.26	53.14

Material:

Housing:PA66,UL94V-0,Black

Electrical Characteristics:

Rated Current:3.0AMP

Voltage Rating:250V AC,DC

Temperature Range:-45°C~+105°C

Insulator Resistance:1000MΩ Min

Withstanding Voltage:1000V AC/Minute

Contact Resistance:20mΩ Max

Order Information:

RHTAYL5-2.54-1xXX-MH

Pitch:2.54mm

Row: _____

1-Single Layer

2-Double Layer

XX-No.of 02~20Pins

Type: _____

MH/FH-Hosing MT/FT-Terminal

S1/S2-Straight Male Pin

R1/R2-Right Angle Male Pin

 NINGBO RHT ELECTRONIC CO.,LTD

UNITS:mm

SHEET SIZE: A4

SCALE:---

DRWN BY PAN

2.54mm Pitch Wire To Board Connector

0~3

3~18

18~50

50~120

CHK'D BY FENG

THIRD ANGLE PROJECTION

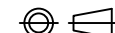
±0.12

±0.15

±0.3

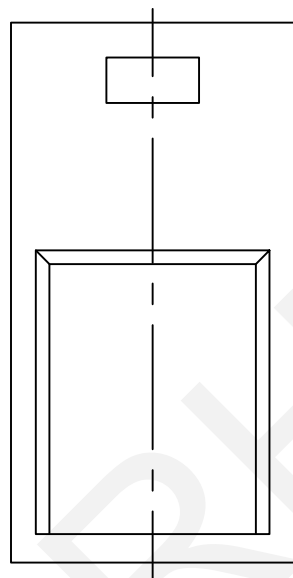
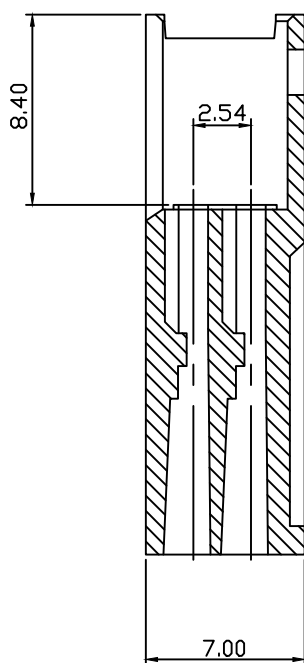
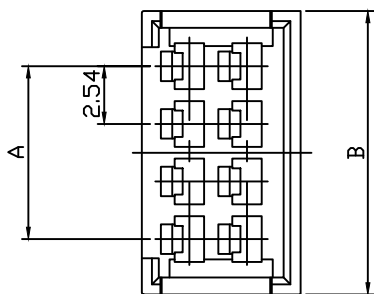
±0.5

APPR BY ZHAN



RHTAYL5-2.54-1xXX-MH

RoHS Compliance

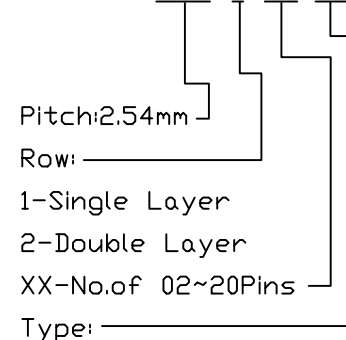


Pin	Dimensions (mm)	
	A	B
2x02	2.54	7.42
2x03	5.08	9.96
2x04	7.62	12.50
2x05	10.16	15.04
2x06	12.70	17.58
2x07	15.24	20.12
2x08	17.78	22.66
2x09	20.32	25.20
2x10	22.86	27.74
2x11	25.40	30.28
2x12	27.94	32.82
2x13	30.48	35.36
2x14	33.02	37.90
2x15	35.56	40.44
2x16	38.10	42.98
2x17	40.64	45.52
2x18	43.18	48.06
2x19	45.72	50.60
2x20	48.26	53.14

Material:
Housing:PA66,UL94V-0,Black

Electrical Characteristics:
Rated Current:3.0AMP
Voltage Rating:250V AC,DC
Temperature Range:-45°C~+105°C
Insulator Resistance:1000MΩ Min
Withstanding Voltage:1000V AC/Minute
Contact Resistance:20mΩ Max

Order Information:
RHTAYL5-2.54-2xXX-MH



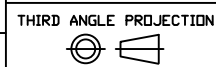
MH/FH-Hosing MT/FT-Terminal
S1/S2-Straight Male Pin
R1/R2-Right Angle Male Pin

RHTECP NINGBO RHT ELECTRONIC CO.,LTD

UNITS:mm	SHEET SIZE: A4	SCALE:---	DRWN BY PAN
0~3	3~18	18~50	50~120
±0.12	±0.15	±0.3	±0.5

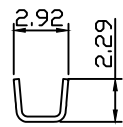
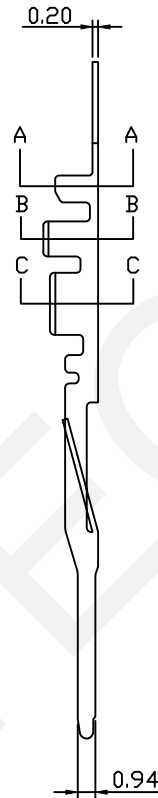
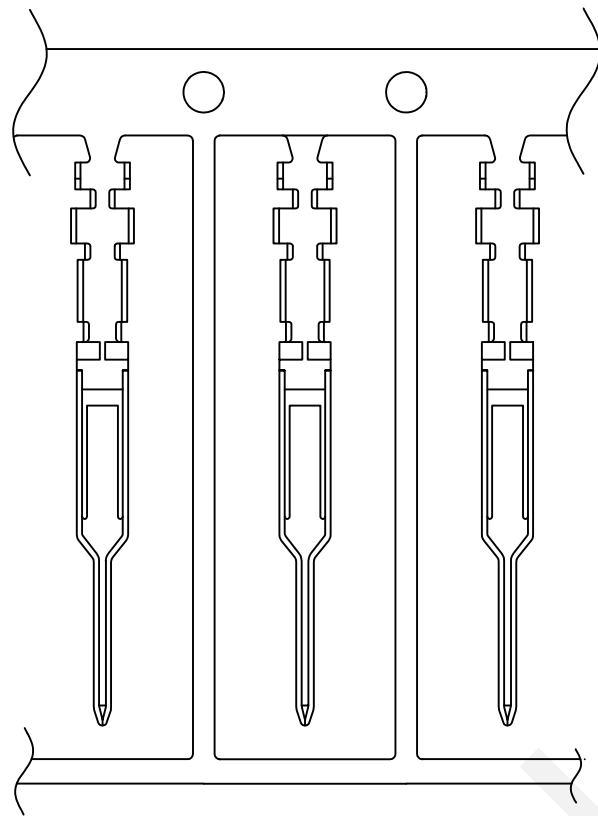
CHK'D BY FENG
APPR BY ZHAN

2.54mm Pitch Wire To Board Connector

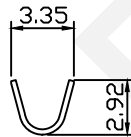


RHTAYL5-2.54-2xXX-MH

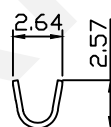
RoHS Compliance



A-A



B-B



C-C

Material:
 Terminal: Phosphor Bronze
 Plating: Tin Plated
 Applicable Wires: AWG #22~#30
 Insulation O.D: 1.55mm
 Qty/Reel: 15000 pcs

Electrical Characteristics:
 Rated Current: 3.0AMP
 Voltage Rating: 250V AC, DC
 Temperature Range: -45°C~+105°C
 Insulator Resistance: 1000MΩ Min
 Withstanding Voltage: 1000V AC/Minute
 Contact Resistance: 20mΩ Max

Order Information:

RHTAYL5-2.54-MT

Pitch: 2.54mm

Type:

MH/FH-Hosing MT/FT-Terminal
 S1/S2-Straight Male Pin
 R1/R2-Right Angle Male Pin

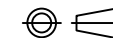
RHTECP NINGBO RHT ELECTRONIC CO.,LTD

UNITS:mm	SHEET SIZE: A4	SCALE: ---	DRWN BY PAN
0~3	3~18	18~50	50~120
±0.12	±0.15	±0.3	±0.5

CHK'D BY FENG
 APPR BY ZHAN

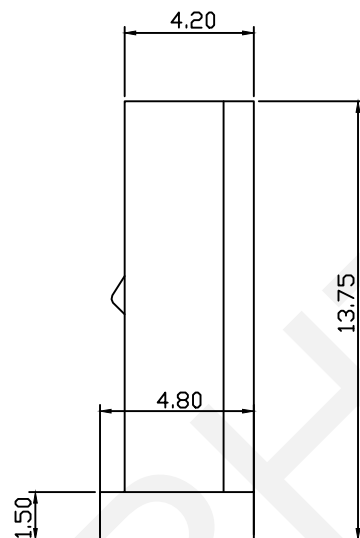
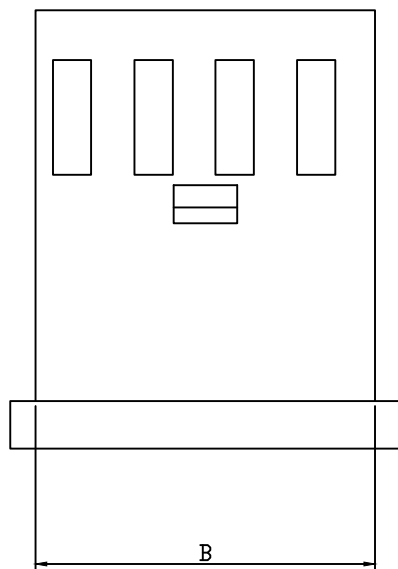
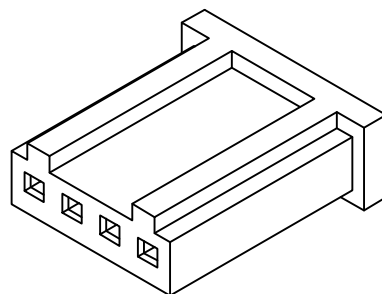
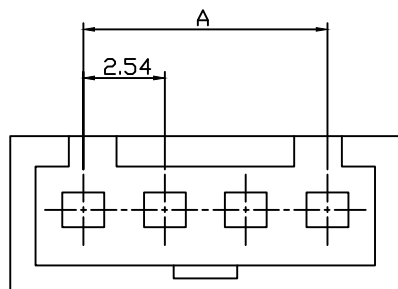
2.54mm Pitch Wire To Board Connector

THIRD ANGLE PROJECTION



RHTAYL5-2.54-MT

RoHS Compliance



Pin	Dimensions (mm)	
	A	B
02	2.54	5.60
03	5.08	8.14
04	7.62	10.68
05	10.16	13.22
06	12.70	15.76
07	15.24	18.30
08	17.78	20.84
09	20.32	23.38
10	22.86	25.92
11	25.40	28.46
12	27.94	31.00
13	30.48	33.54
14	33.02	36.08
15	35.56	38.62
16	38.10	41.16
17	40.64	43.70
18	43.18	46.24
19	45.72	48.78
20	48.26	51.32

Material:
Housing:PBT,UL94V-0,Black

Electrical Characteristics:
Rated Current:3.0AMP
Voltage Rating:250V AC,DC
Temperature Range:-45°C~+105°C
Insulator Resistance:1000MΩ Min
Withstanding Voltage:1000V AC/Minute
Contact Resistance:20mΩ Max

Order Information:
RHTAYL5-2.54-1xXX-FH

Pitch:2.54mm

Row: _____

1-Single Layer
2-Double Layer

XX-No.of 02~20Pins

Type: _____

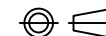
MH/FH-Hosing MT/FT-Terminal
S1/S2-Straight Male Pin
R1/R2-Right Angle Male Pin

NINGBO RHT ELECTRONIC CO.,LTD

UNITS:mm	SHEET SIZE: A4			SCALE:---	DRWN BY PAN
0~3	3~18	18~50	50~120	CHK'D BY FENG	
±0.12	±0.15	±0.3	±0.5	APPR BY ZHAN	

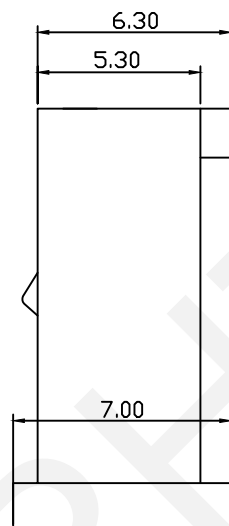
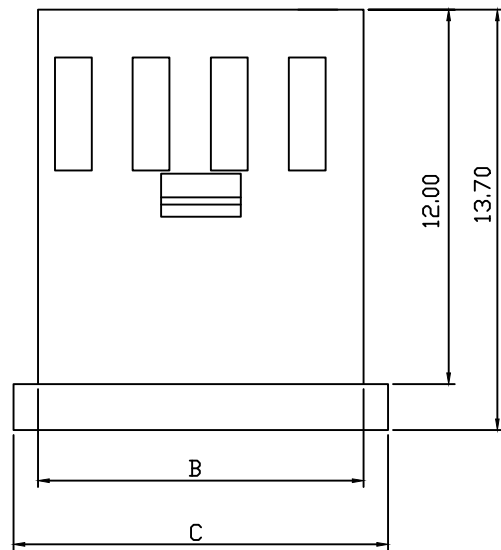
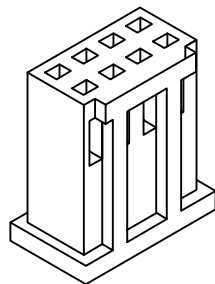
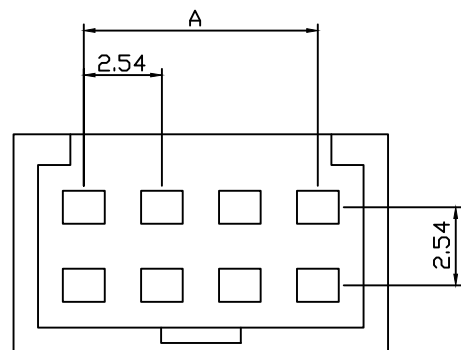
2.54mm Pitch Wire To Board Connector

THIRD ANGLE PROJECTION



RHTAYL5-2.54-1xXX-FH

RoHS Compliance



Pin	Dimensions (mm)		
	A	B	C
2x02	2.54	5.52	7.12
2x03	5.08	8.06	9.66
2x04	7.62	10.60	12.20
2x05	10.16	13.14	14.74
2x06	12.70	15.68	17.28
2x07	15.24	18.22	19.82
2x08	17.78	20.76	22.36
2x09	20.32	23.30	24.90
2x10	22.86	25.84	27.44
2x11	25.40	28.38	29.98
2x12	27.94	30.92	32.52
2x13	30.48	33.46	35.06
2x14	33.02	36.00	37.60
2x15	35.56	38.54	40.14
2x16	38.10	41.08	42.68
2x17	40.64	43.62	45.22
2x18	43.18	46.16	47.76
2x19	45.72	48.70	50.30
2x32	78.74	81.72	83.32

Material:

Housing:PBT,UL94V-0,Black

Electrical Characteristics:

Rated Current:3.0AMP

Voltage Rating:250V AC,DC

Temperature Range:-45°C~+105°C

Insulator Resistance:1000MΩ Min

Withstanding Voltage:1000V AC/Minute

Contact Resistance:20mΩ Max

Order Information:

RHTAYL5-2.54-2xXX-FH

Pitch:2.54mm

Row: _____

1-Single Layer

2-Double Layer

XX-No.of 02~32Pins

Type: _____

MH/FH-Hosing MT/FT-Terminal

S1/S2-Straight Male Pin

R1/R2-Right Angle Male Pin

 NINGBO RHT ELECTRONIC CO.,LTD

UNITS:mm

SHEET SIZE: A4

SCALE:---

DRWN BY PAN

2.54mm Pitch Wire To Board Connector

0~3

3~18

18~50

50~120

CHK'D BY FENG

THIRD ANGLE PROJECTION

±0.12

±0.15

±0.3

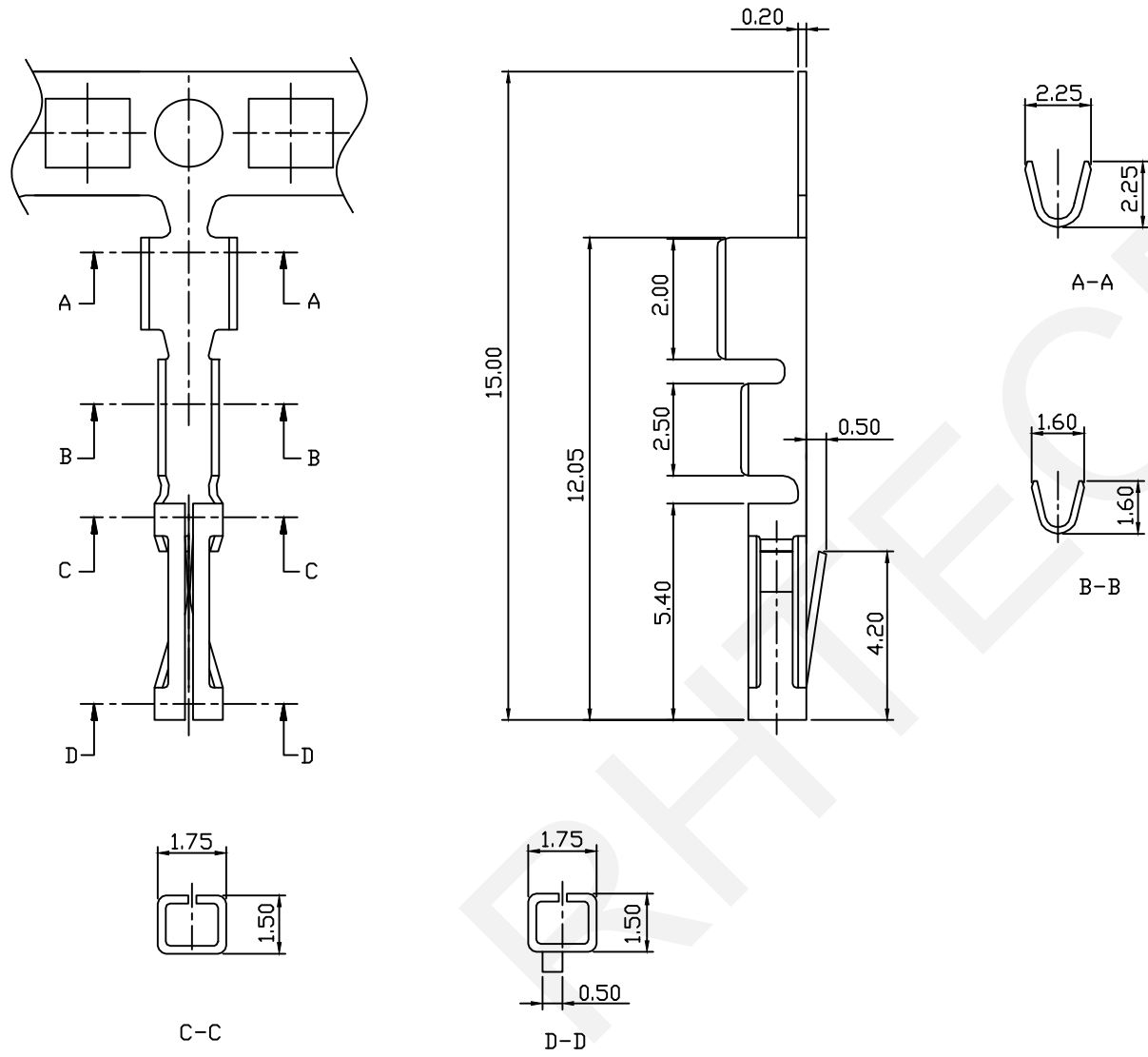
±0.5

APPR BY ZHAN



RHTAYL5-2.54-2xXX-FH

RoHS Compliance



Material:
 Terminal: Phosphor Bronze
 Plating: Tin Plated
 Applicable Wires: AWG #22~#30
 Insulation O.D.: 1.55mm
 Qty/Reel: 15000 pcs

Electrical Characteristics:
 Rated Current: 3.0AMP
 Voltage Rating: 250V AC, DC
 Temperature Range: -45°C ~ +105°C
 Insulator Resistance: 1000MΩ Min
 Withstanding Voltage: 1000V AC/Minute
 Contact Resistance: 20mΩ Max

Order Information:

RHTAYL5-2.54-FT

Pitch: 2.54mm

Type:

MH/FH-Hosing MT/FT-Terminal

S1/S2-Straight Male Pin

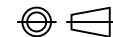
R1/R2-Right Angle Male Pin

RHTECP NINGBO RHT ELECTRONIC CO.,LTD

UNITS:mm	SHEET SIZE: A4			SCALE:---	DRWN BY PAN
0~3	3~18	18~50	50~120	CHK'D BY FENG	
±0.12	±0.15	±0.3	±0.5	APPR BY ZHAN	

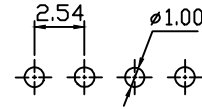
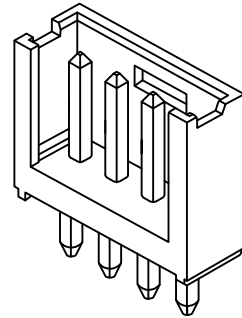
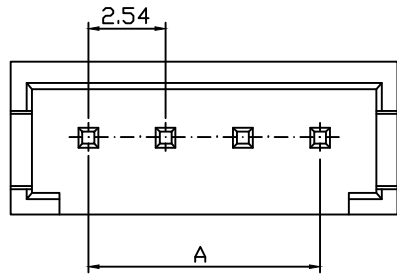
2.54mm Pitch Wire To Board Connector

THIRD ANGLE PROJECTION



RHTAYL5-2.54-FT

RoHS Compliance



PCB LAYOUT

Material:

Housing:PBT,UL94V-0,Black

Pin:Brass, Tin Plated

Electrical Characteristics:

Rated Current:3.0AMP

Voltage Rating:250V AC,DC

Temperature Range:-45°C~+105°C

Insulator Resistance:1000MΩ Min

Withstanding Voltage:1000V AC/Minute

Contact Resistance:20mΩ Max

Pin	Dimensions (mm)	
	A	B
02	2.54	8.20
03	5.08	10.70
04	7.62	13.20
05	10.16	15.70
06	12.70	18.20
07	15.24	20.70
08	17.78	23.20
09	20.32	25.70
10	22.86	28.20
11	25.40	30.70
12	27.94	33.20
13	30.48	35.70
14	33.02	38.20
15	35.56	40.70
16	38.10	43.20
17	40.64	45.70
18	43.18	48.20
19	45.72	50.70
20	48.26	53.20
21	48.26	55.70
22	48.26	58.20

Order Information:

RHTAYL5-2.54-1xXX-S1

Pitch:2.54mm

Row:

1-Single Layer

2-Double Layer

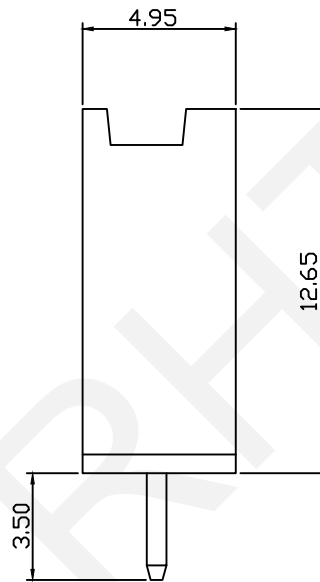
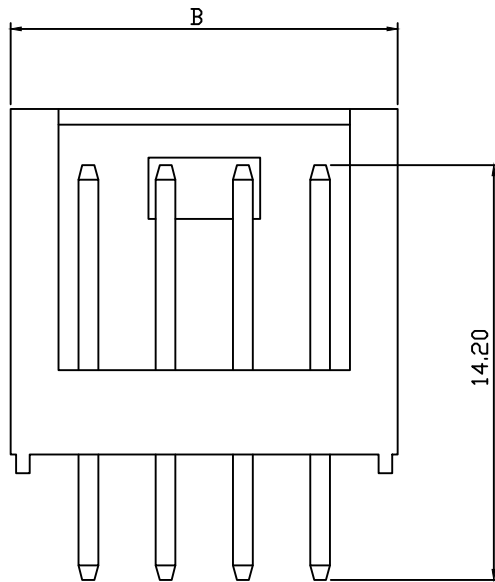
XX-No.of 02~22Pins

Type:

MH/FH-Hosing MT/FT-Terminal

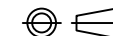
S1/S2-Straight Male Pin

R1/R2-Right Angle Male Pin



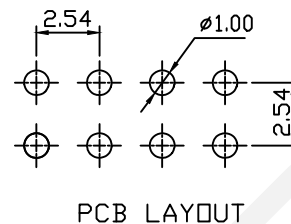
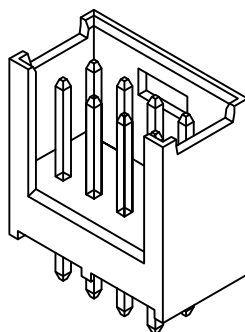
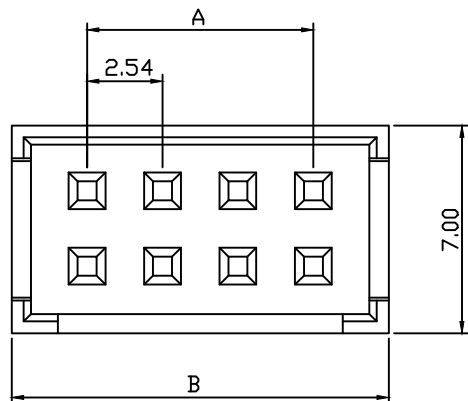
RHTECP NINGBO RHT ELECTRONIC CO.,LTD

UNITS:mm	SHEET SIZE: A4				SCALE:---	DRWN BY PAN
0~3	3~18	18~50	50~120	CHK'D BY FENG	2.54mm Pitch Wire To Board Connector	
±0.12	±0.15	±0.3	±0.5	APPR BY ZHAN	THIRD ANGLE PROJECTION	RHTAYL5-2.54-1xXX-S1



RHTAYL5-2.54-1xXX-S1

RoHS Compliance



Material:

Housing:PBT,UL94V-0,Black

Pin:Brass, Tin Plated

Electrical Characteristics:

Rated Current:3.0AMP

Voltage Rating:250V AC,DC

Temperature Range:-45°C~+105°C

Insulator Resistance:1000MΩ Min

Withstanding Voltage:1000V AC/Minute

Contact Resistance:20mΩ Max

Pin	Dimensions (mm)	
	A	B
2x02	2.54	7.46
2x03	5.08	10.00
2x04	7.62	12.54
2x05	10.16	15.08
2x06	12.70	17.62
2x07	15.24	20.16
2x08	17.78	22.70
2x09	20.32	25.24
2x10	22.86	27.78
2x11	25.40	30.32
2x12	27.94	32.86
2x13	30.48	35.40
2x14	33.02	37.94
2x15	35.56	40.48
2x16	38.10	43.02
2x17	40.64	45.56
2x18	43.18	48.10
2x19	45.72	50.64
2x32	78.74	83.66

Order Information:

RHTAYL5-2.54-2xXX-S1

Pitch:2.54mm

Row:

1-Single Layer

2-Double Layer

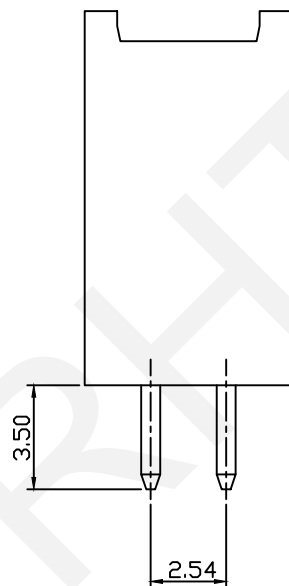
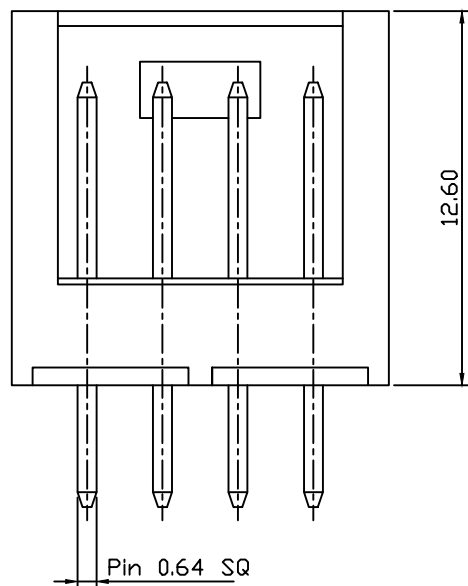
XX-No.of 02~32Pins

Type:

MH/FH-Hosing MT/FT-Terminal

S1/S2-Straight Male Pin

R1/R2-Right Angle Male Pin



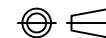
RHTECP NINGBO RHT ELECTRONIC CO.,LTD

UNITS:mm	SHEET SIZE: A4	SCALE:---	DRWN BY PAN
0~3	3~18	18~50	50~120
±0.12	±0.15	±0.3	±0.5

CHK'D BY FENG
APPR BY ZHAN

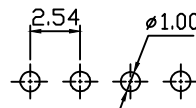
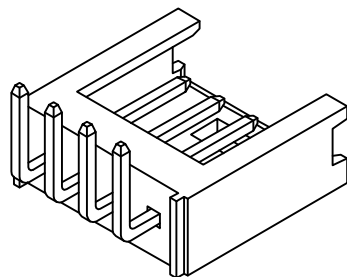
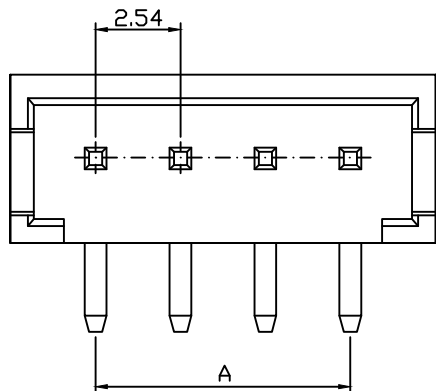
2.54mm Pitch Wire To Board Connector

THIRD ANGLE PROJECTION



RHTAYL5-2.54-2xXX-S1

RoHS Compliance



PCB LAYOUT

Material:

Housing:PBT,UL94V-0,Black

Pin:Brass, Tin Plated

Electrical Characteristics:

Rated Current:3.0AMP

Voltage Rating:250V AC,DC

Temperature Range:-45°C~+105°C

Insulator Resistance:1000MΩ Min

Withstanding Voltage:1000V AC/Minute

Contact Resistance:20mΩ Max

Pin	Dimensions (mm)	
	A	B
02	2.54	8.20
03	5.08	10.70
04	7.62	13.20
05	10.16	15.70
06	12.70	18.20
07	15.24	20.70
08	17.78	23.20
09	20.32	25.70
10	22.86	28.20
11	25.40	30.70
12	27.94	33.20
13	30.48	35.70
14	33.02	38.20
15	35.56	40.70
16	38.10	43.20
17	40.64	45.70
18	43.18	48.20
19	45.72	50.70
20	48.26	53.20
21	48.26	55.70
22	48.26	58.20

Order Information:

RHTAYL5-2.54-1xXX-R1

Pitch:2.54mm

Row:

1-Single Layer

2-Double Layer

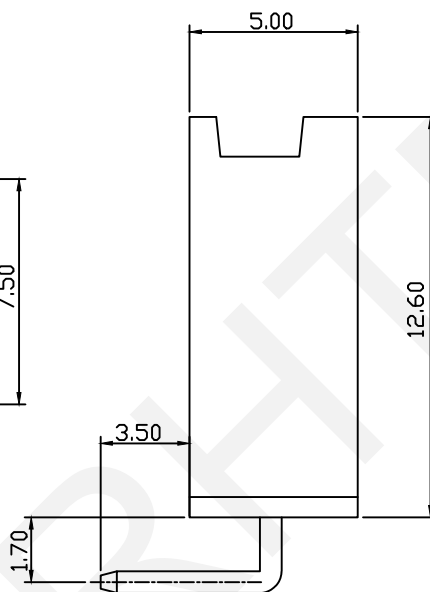
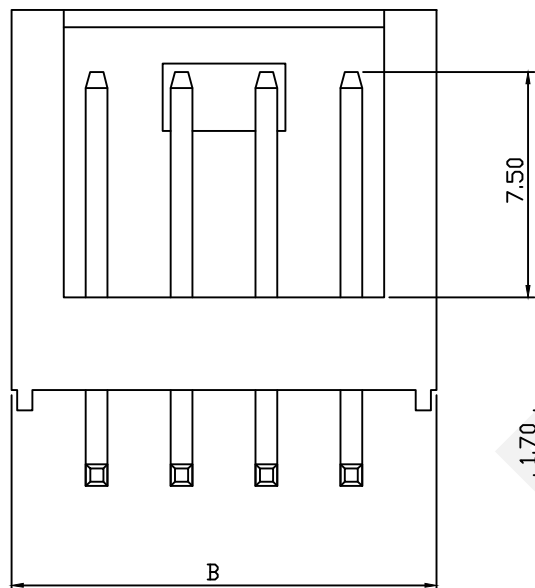
XX-No.of 02~22Pins

Type:

MH/FH-Hosing MT/FT-Terminal

S1/S2-Straight Male Pin

R1/R2-Right Angle Male Pin



UNITS:mm

SHEET SIZE: A4

SCALE:---

DRWN BY PAN

2.54mm Pitch Wire To Board Connector



NINGBO RHT ELECTRONIC CO.,LTD

0~3

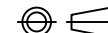
3~18

18~50

50~120

CHK'D BY FENG

THIRD ANGLE PROJECTION



RHTAYL5-2.54-1xXX-R1

±0.12

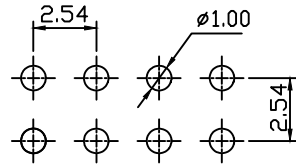
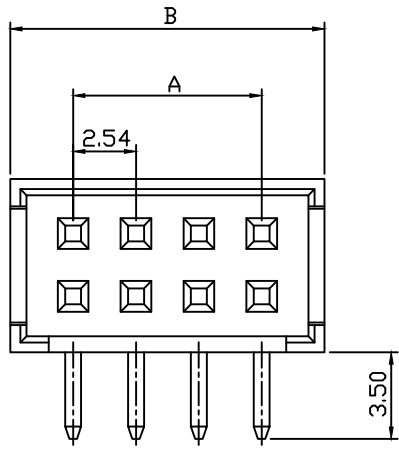
±0.15

±0.3

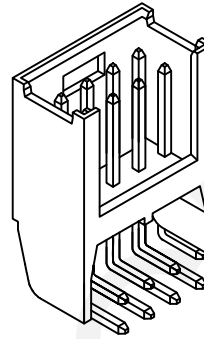
±0.5

APPR BY ZHAN

RoHS Compliance

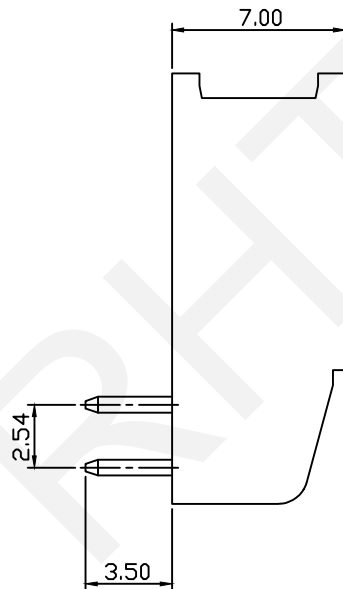
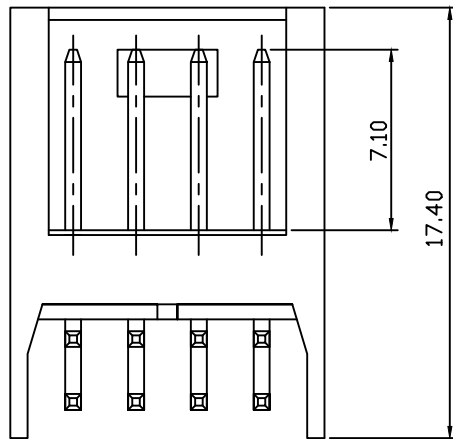


PCB LAYOUT



Material:
Housing:PBT,UL94V-0,Black
Pin:Brass, Tin Plated

Electrical Characteristics:
Rated Current:3.0AMP
Voltage Rating:250V AC,DC
Temperature Range:-45°C~+105°C
Insulator Resistance:1000MΩ Min
Withstanding Voltage:1000V AC/Minute
Contact Resistance:20mΩ Max



Order Information:

RHTAYL5-2.54-2xXX-R1

Pitch:2.54mm

Row:

1-Single Layer

2-Double Layer

XX-No.of 02~32Pins

Type:

MH/FH-Hosing MT/FT-Terminal

S1/S2-Straight Male Pin

R1/R2-Right Angle Male Pin

Pin	Dimensions (mm)		Pin	Dimensions (mm)	
	A	B		A	B
2x02	2.54	7.46	2x18	43.18	48.10
2x03	5.08	10.00	2x19	45.72	50.64
2x04	7.62	12.54	2x20	48.26	53.18
2x05	10.16	15.08	2x21	50.80	55.72
2x06	12.70	17.62	2x22	53.34	58.26
2x07	15.24	20.16	2x23	55.88	60.80
2x08	17.78	22.70	2x24	58.42	63.34
2x09	20.32	25.24	2x25	60.96	65.88
2x10	22.86	27.78	2x26	63.50	68.42
2x11	25.40	30.32	2x27	66.04	70.96
2x12	27.94	32.86	2x28	68.58	73.50
2x13	30.48	35.40	2x29	71.12	76.04
2x14	33.02	37.94	2x30	73.66	78.58
2x15	35.56	40.48	2x31	76.20	81.12
2x16	38.10	43.02	2x32	78.74	83.66
2x17	40.64	45.56			

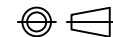
NINGBO RHT ELECTRONIC CO.,LTD

UNITS:mm	SHEET SIZE: A4	SCALE:---	DRWN BY PAN
0~3	3~18	18~50	50~120
±0.12	±0.15	±0.3	±0.5

CHK'D BY FENG
APPR BY ZHAN

2.54mm Pitch Wire To Board Connector

THIRD ANGLE PROJECTION



RHTAYL5-2.54-2xXX-R1