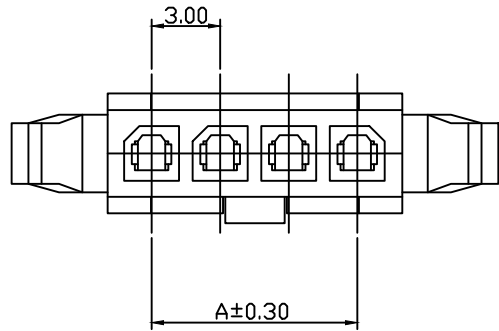
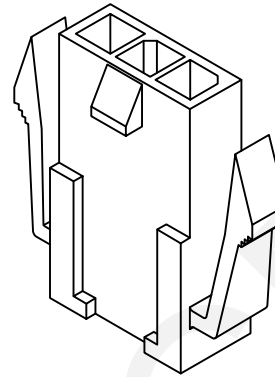


RoHS Compliance



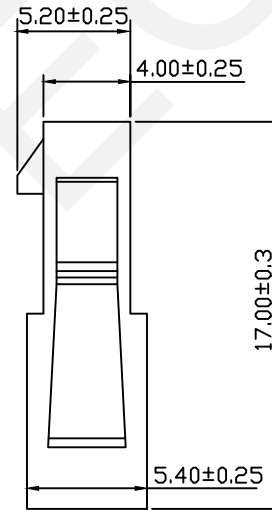
Pin	Dimensions(mm)	
	A	B
02	3.00	7.00
03	6.00	10.00
04	9.00	13.00
05	12.00	16.00
06	15.00	19.00
07	18.00	22.00
08	21.00	25.00
09	24.00	28.00
10	27.00	31.00
11	30.00	34.00
12	33.00	37.00



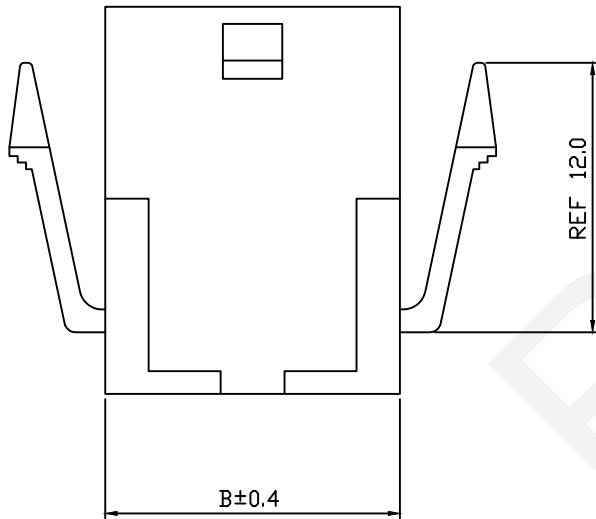
Material:
Housing: PA66,UL94V-2

Electrical Characteristics:
Rated Current: 5.0AMP
Voltage Rating: 250V AC,DC
Temperature Range: -25°C~+85°C
Insulator Resistance: 1000MΩ/Min.
Withstanding Voltage: 1500V AC/Minute
Contact Resistance: 10MΩ/Max

Order Information:
RHTAYM1-3.00-1x02-FH



Pitch:3.00mm
Pins: _____
1-Single Layer
2-Double Layer
XX-No.of 02~12 Pins _____
Type: _____
MH/FH/FHN-Hosing
MT/FT-Terminal

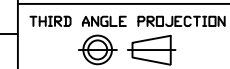


RHTECP NINGBO RHT ELECTRONIC CO.,LTD

UNITS:mm	SHEET SIZE: A4	SCALE:---	DRWN BY PAN
0~3	3~18	18~50	50~120
±0.12	±0.15	±0.3	±0.5

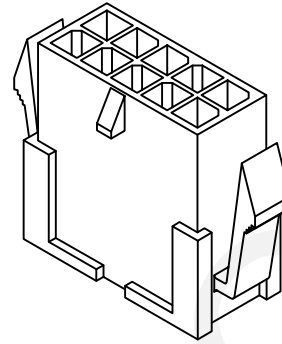
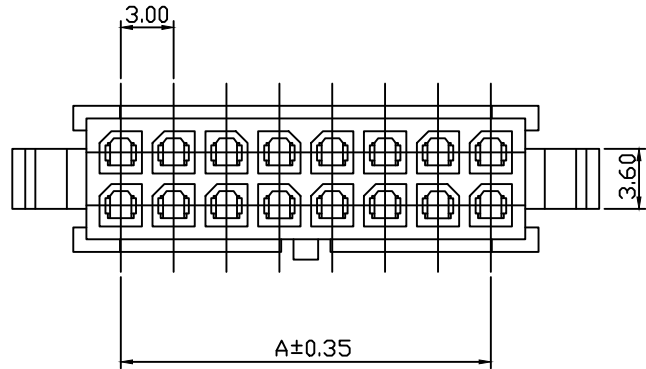
CHK'D BY FENG
APPR BY ZHAN

3.0mm Pitch Micro Fit 3.0 43020 43025 43045 43030
43031 43645 43640 Wire To Board Connector



RHTAYM1-3.00-1x02-FH

RoHS Compliance



Material:

Housing: PA66,UL94V-2

Electrical Characteristics:

Rated Current: 5.0AMP

Voltage Rating: 250V AC,DC

Temperature Range: -25°C~+85°C

Insulator Resistance: 1000MΩ/Min.

Withstanding Voltage: 1500V AC/Minute

Contact Resistance: 10MΩ/Max

Order Information:

RHTAYM1-3.00-2x01-FH

Pitch:3.00mm

Pins:

1-Single Layer

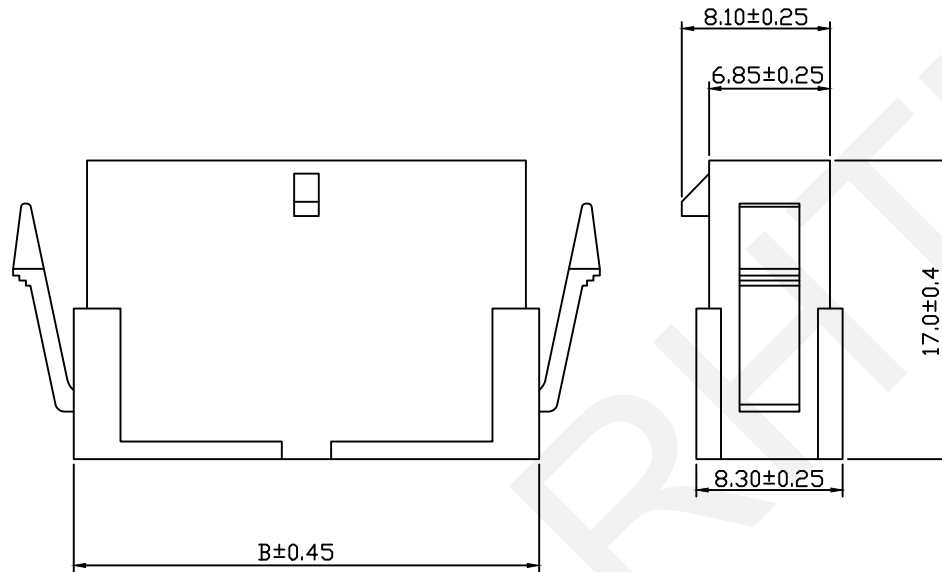
2-Double Layer

XX-No.of 01~12 Pins

Type:

MH/FH/FHN-Hosing

MT/FT-Terminal



Pin	Dimensions(mm)	
	A	B
2x01	---	5.35
2x02	3.00	8.35
2x03	6.00	11.35
2x04	9.00	14.35
2x05	12.00	17.35
2x06	15.00	20.35
2x07	18.00	23.35
2x08	21.00	26.35
2x09	24.00	29.35
2x10	27.00	32.35
2x11	30.00	35.35
2x12	33.00	38.35

RHTECP NINGBO RHT ELECTRONIC CO.,LTD

UNITS:mm	SHEET SIZE: A4	SCALE:---	DRWN BY PAN
0~3	3~18	18~50	50~120
±0.12	±0.15	±0.3	±0.5

CHK'D BY FENG
APPR BY ZHAN

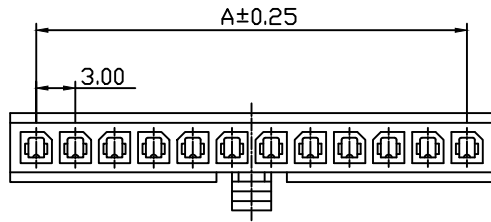
3.0mm Pitch Micro Fit 3.0 43020 43025 43045 43030
43031 43645 43640 Wire To Board Connector

THIRD ANGLE PROJECTION



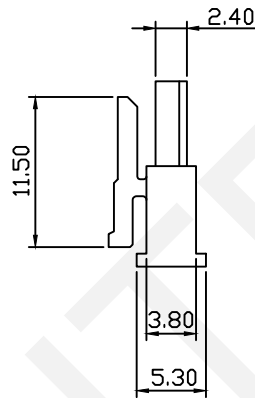
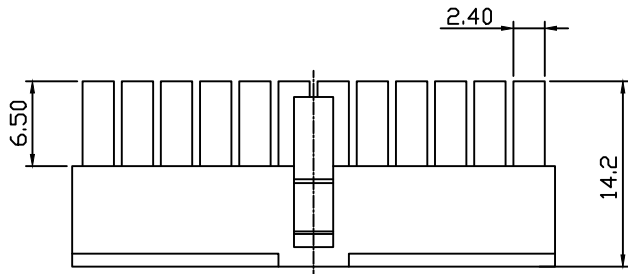
RHTAYM1-3.00-2x01-FH

RoHS Compliance



Material:
Housing: PA66,UL94V-0/2

Electrical Characteristics:
Rated Current: 5.0AMP
Voltage Rating: 250V AC,DC
Temperature Range: -25°C~+85°C
Insulator Resistance: 1000MΩ/Min.
Withstanding Voltage: 1500V AC/Minute
Contact Resistance: 10MΩ/Max



Pin	Dimensions(mm)	
	A	B
02	3.00	7.00
03	6.00	10.00
04	9.00	13.00
05	12.00	16.00
06	15.00	19.00
07	18.00	22.00
08	21.00	25.00
09	24.00	28.00
10	27.00	31.00
11	30.00	34.00
12	33.00	37.00

Order Information:

RHTAYM1-3.00-1x02-MH

Pitch:3.00mm

Pins: _____

1-Single Layer

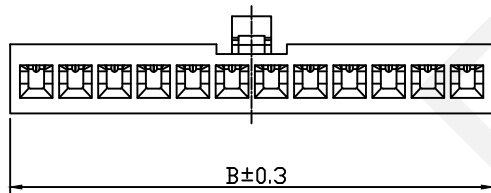
2-Double Layer

XX-No.of 02~12 Pins _____

Type: _____

MH/FH/FHN-Hosing

MT/FT-Terminal



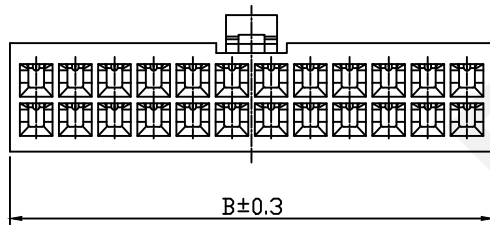
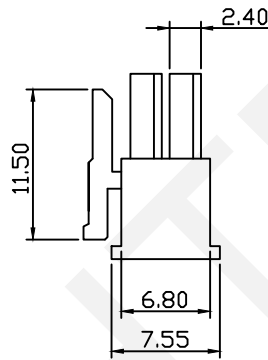
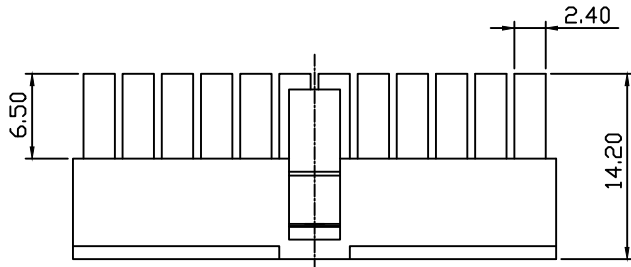
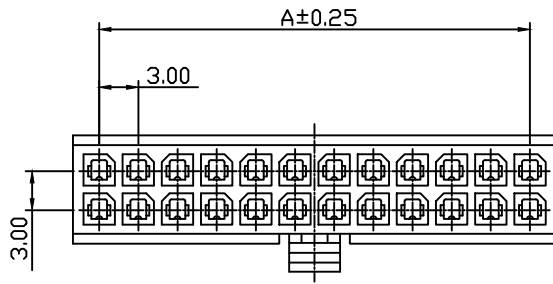
UNITS:mm	SHEET SIZE: A4	SCALE:---	DRWN BY PAN
0~3	3~18	18~50	50~120
±0.12	±0.15	±0.3	±0.5

CHK'D BY FENG
APPR BY ZHAN

3.0mm Pitch Micro Fit 3.0 43020 43025 43045 43030 43031 43645 43640 Wire To Board Connector	
THIRD ANGLE PROJECTION 	RHTAYM1-3.00-1x02-MH

NINGBO RHT ELECTRONIC CO.,LTD

RoHS Compliance



Material:
Housing: PA66,UL94V-0/2

Electrical Characteristics:
Rated Current: 5.0AMP
Voltage Rating: 250V AC,DC
Temperature Range: -25°C~+85°C
Insulator Resistance: 1000MΩ/Min.
Withstanding Voltage: 1500V AC/Minute
Contact Resistance: 10MΩ/Max

Pin	Dimensions(mm)	
	A	B
2x01	---	5.50
2x02	3.00	8.50
2x03	6.00	10.00
2x04	9.00	13.00
2x05	12.00	16.00
2x06	15.00	19.00
2x07	18.00	22.00
2x08	21.00	25.00
2x09	24.00	28.00
2x10	27.00	31.00
2x11	30.00	34.00
2x12	33.00	37.00

Order Information:
RHTAYM1-3.00-2x01-MH

Pitch:3.00mm
Pins: _____
1-Single Layer
2-Double Layer
XX-No.of 01~12 Pins
Type: _____
MH/FH/FHN-Hosing
MT/FT-Terminal

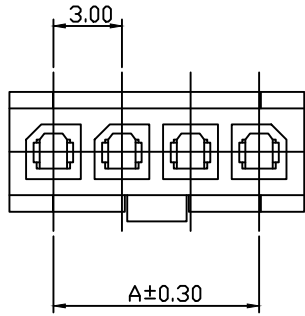
RHITECP NINGBO RHT ELECTRONIC CO.,LTD

UNITS:mm	SHEET SIZE: A4	SCALE:---	DRWN BY PAN
0~3	3~18	18~50	50~120
±0.12	±0.15	±0.3	±0.5

CHK'D BY FENG
APPR BY ZHAN

3.0mm Pitch Micro Fit 3.0 43020 43025 43045 43030
43031 43645 43640 Wire To Board Connector
THIRD ANGLE PROJECTION
RHTAYM1-3.00-2x01-MH

RoHS Compliance



Pin	Dimensions(mm)	
	A	B
02	3.00	7.00
03	6.00	10.00
04	9.00	13.00
05	12.00	16.00
06	15.00	19.00
07	18.00	22.00
08	21.00	25.00
09	24.00	28.00
10	27.00	31.00
11	30.00	34.00
12	33.00	37.00

Material:

Housing: PA66,UL94V-2

Electrical Characteristics:

Rated Current: 5.0AMP

Voltage Rating: 250V AC,DC

Temperature Range: -25°C~+85°C

Insulator Resistance: 1000MΩ/Min.

Withstanding Voltage: 1500V AC/Minute

Contact Resistance: 10MΩ/Max

Order Information:

RHTAYM1-3.00-1x02-FHN

Pitch:3.00mm

Pins:

1-Single Layer

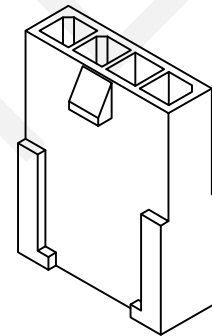
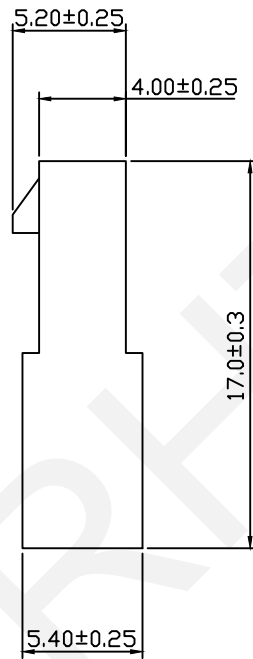
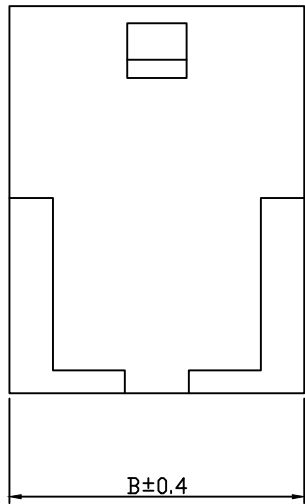
2-Double Layer

XX-No.of 02~12 Pins

Type:

MH/FH/FHN-Hosing

MT/FT-Terminal

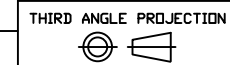


RHTECP NINGBO RHT ELECTRONIC CO.,LTD

UNITS:mm	SHEET SIZE: A4	SCALE:---	DRWN BY PAN
0~3	3~18	18~50	50~120
±0.12	±0.15	±0.3	±0.5

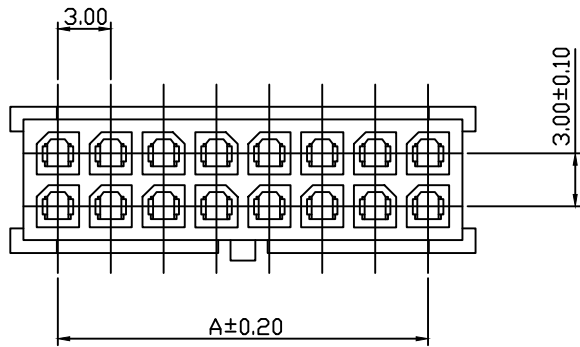
CHK'D BY FENG
APPR BY ZHAN

3.0mm Pitch Micro Fit 3.0 43020 43025 43045 43030
43031 43645 43640 Wire To Board Connector



RHTAYM1-3.00-1x02-FHN

RoHS Compliance



Pin	Dimensions(mm)	
	A	B
2x01	---	3.85
2x02	3.00	6.85
2x03	6.00	9.85
2x04	9.00	12.85
2x05	12.00	15.85
2x06	15.00	18.85
2x07	18.00	21.85
2x08	21.00	24.85
2x09	24.00	27.85
2x10	27.00	30.85
2x11	30.00	33.85
2x12	33.00	36.85

Material:

Housing: PA66,UL94V-2

Electrical Characteristics:

Rated Current: 5.0AMP

Voltage Rating: 250V AC,DC

Temperature Range: -25°C~+85°C

Insulator Resistance: 1000MΩ/Min.

Withstanding Voltage: 1500V AC/Minute

Contact Resistance: 10MΩ/Max

Order Information:

RHTAYM1-3.00-2x01-FHN

Pitch:3.00mm

Pins:

1-Single Layer

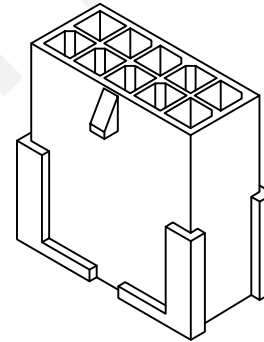
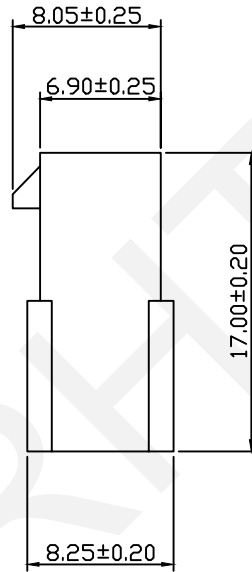
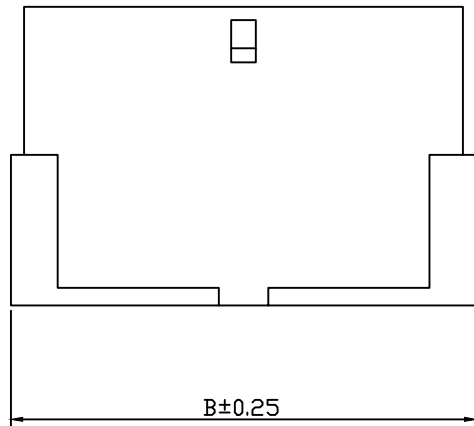
2-Double Layer

XX-No.of 01~12 Pins

Type:

MH/FH/FHN-Hosing

MT/FT-Terminal

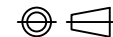


RHTECP NINGBO RHT ELECTRONIC CO.,LTD

UNITS:mm	SHEET SIZE: A4			SCALE:---	DRWN BY PAN
0~3	3~18	18~50	50~120	CHK'D BY FENG	
±0.12	±0.15	±0.3	±0.5	APPR BY ZHAN	

3.0mm Pitch Micro Fit 3.0 43020 43025 43045 43030
43031 43645 43640 Wire To Board Connector

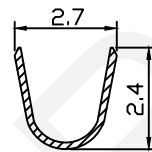
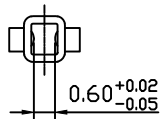
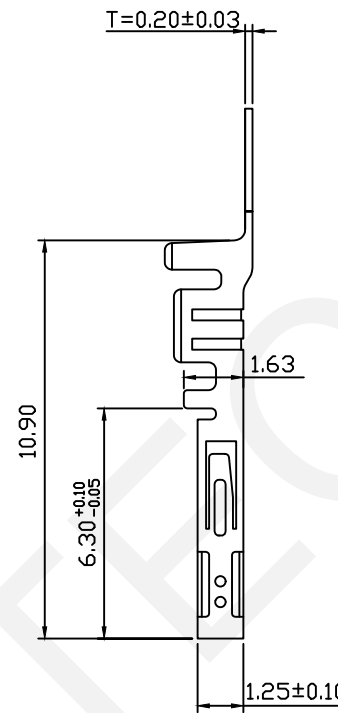
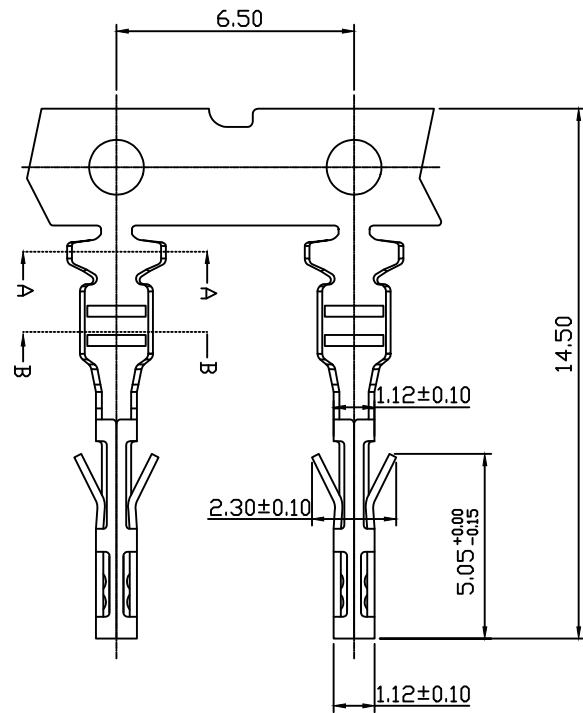
THIRD ANGLE PROJECTION



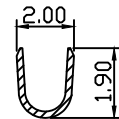
RHTAYM1-3.00-2x01-FHN



RoHS Compliance



SECTION A-A



SECTION B-B

Material:

Terminal :Phospor Bronze

Plating: Tin Plated Over Nickel

Applicable Wires: AWG #20~#24

Insulation O.D:1.30~1.80mm

Qty/Reel:10000PCS

Current Rating: 5.0A AC,DC

Voltage Rating: 250V AC,DC

Temperature Range: -25°C~+85°C

Insulator Resistance: 1000MΩ/Min.

Withstanding Voltage: 1500V AC/Minute

Contact Resistance: 10MΩ/Max

Order Information:

RHTAYM1-3.00-FT

Pitch:3.00mm

Type:

MH/FH/FHN-Hosing

MT/FT-Terminal

RHTECP NINGBO RHT ELECTRONIC CO.,LTD

UNITS:mm	SHEET SIZE: A4	SCALE:---	DRWN BY PAN
0~3	3~18	18~50	50~120
±0.12	±0.15	±0.3	±0.5

CHK'D BY FENG
APPR BY ZHAN

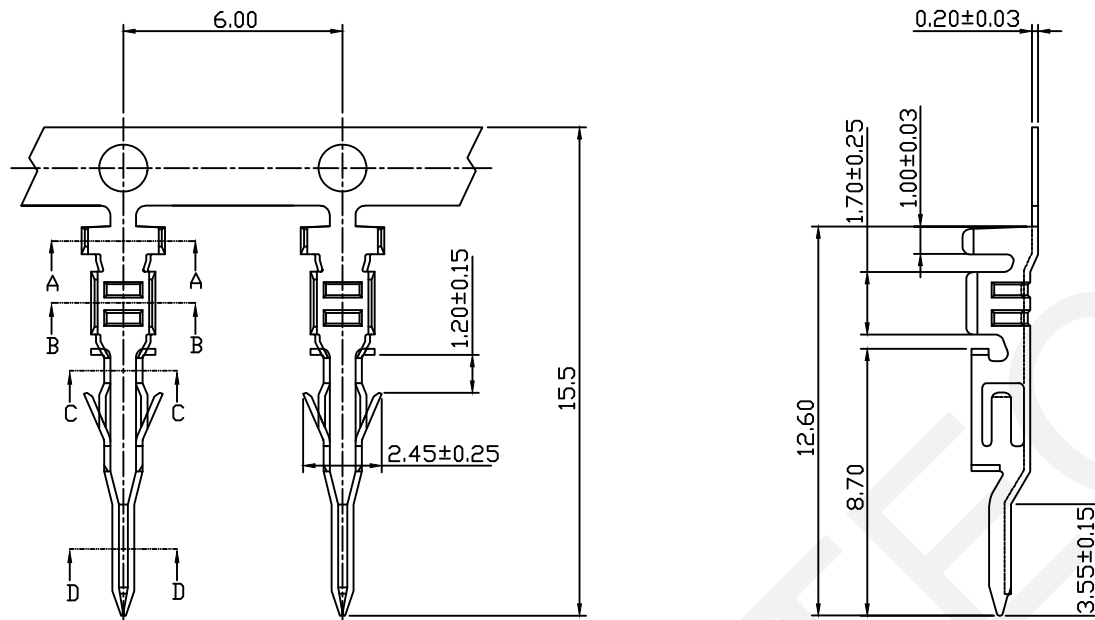
3.0mm Pitch Micro Fit 3.0 43020 43025 43045 43030
43031 43645 43640 Wire To Board Connector

THIRD ANGLE PROJECTION



RHTAYM1-3.00-FT

RoHS Compliance



Material:

Terminal :Phospor Bronze

Plating: Tin Plated Over Nickel

Applicable Wires: AWG #20~#24

Insulation O.D:1.30~1.80mm

Qty/Reel:10000PCS

Current Rating: 5.0A AC,DC

Voltage Rating: 250V AC,DC

Temperature Range: -25°C~+85°C

Insulator Resistance: 1000MΩ/Min.

Withstanding Voltage: 1500V AC/Minute

Contact Resistance: 10MΩ/Max

Order Information:

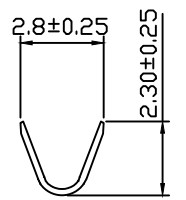
RHTAYM1-3.00-MT

Pitch:3.00mm

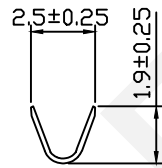
Type:

MH/FH/FHN-Hosing

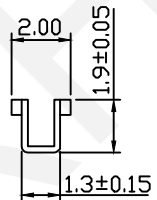
MT/FT-Terminal



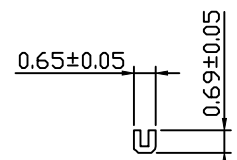
SECTION A-A



SECTION B-B



SECTION C-C



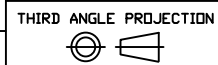
SECTION D-D

RHTECP NINGBO RHT ELECTRONIC CO.,LTD

UNITS:mm	SHEET SIZE: A4	SCALE:---	DRWN BY PAN
0~3	3~18	18~50	50~120
±0.12	±0.15	±0.3	±0.5

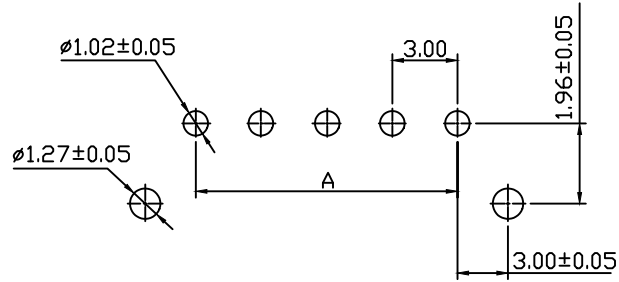
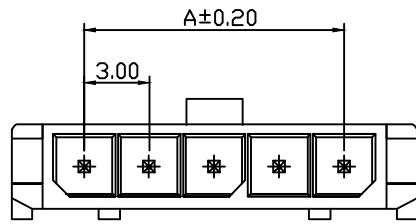
CHK'D BY FENG
APPR BY ZHAN

3.0mm Pitch Micro Fit 3.0 43020 43025 43045 43030
43031 43645 43640 Wire To Board Connector



RHTAYM1-3.00-MT

RoHS Compliance



Recommended P.C.B.Layout
Total Tolerance:±0.05mm

Pin	Dimensions(mm)	
	A	B
02	3.00	9.65
03	6.00	12.65
04	9.00	15.65
05	12.00	18.65
06	15.00	21.65
07	18.00	24.65
08	21.00	27.65
09	24.00	30.65
10	27.00	33.65
11	30.00	36.65
12	33.00	39.65

Material:
Housing: PA9T,UL94V-0
Contact:Brass
Plating: Tin Plated Or Gold Plated

Electrical Characteristics:
Rated Current: 5.0AMP
Voltage Rating: 250V AC,DC
Temperature Range: -25°C~+85°C
Insulator Resistance: 1000MΩ/Min.
Withstanding Voltage: 1500V AC/Minute
Contact Resistance: 10MΩ/Max

Order Information:

RHTAYM1-3.00-1x02-S

Pitch:3.00mm

Pins: _____

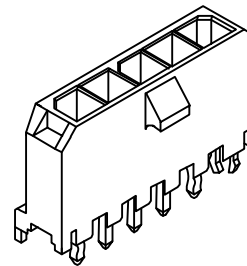
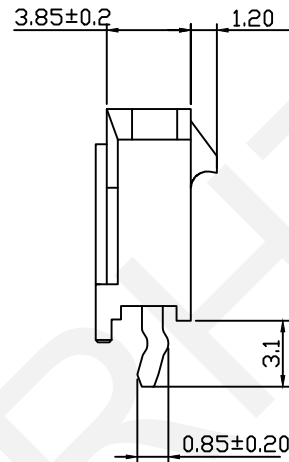
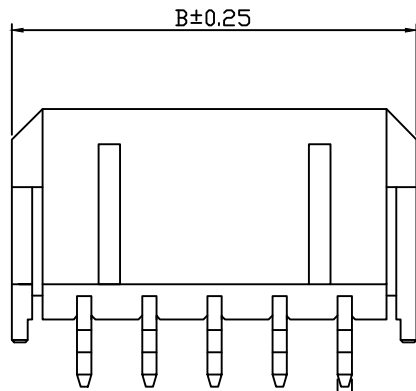
1-Single Layer

2-Double Layer

XX-No.of 02~12 Pins

Type: _____

S/SD-Straight Male Pin

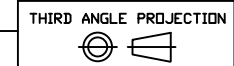


RHTECP NINGBO RHT ELECTRONIC CO.,LTD

UNITS:mm	SHEET SIZE: A4	SCALE:---	DRWN BY PAN
0~3	3~18	18~50	50~120
±0.12	±0.15	±0.3	±0.5

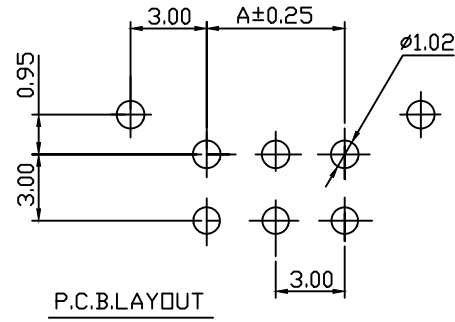
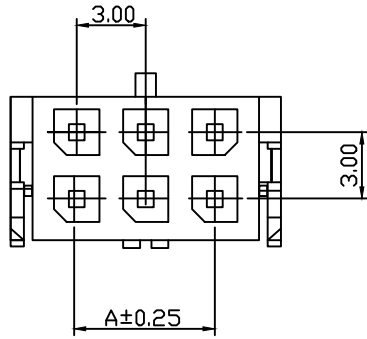
CHK'D BY FENG
APPR BY ZHAN

3.0mm Pitch Micro Fit 3.0 43020 43025 43045 43030
43031 43645 43640 Wire To Board Connector



RHTAYM1-3.00-1x02-S

RoHS Compliance



Pin	Dimensions(mm)	
	A	B
01	---	6.65
02	3.00	9.65
03	6.00	12.65
04	9.00	15.65
05	12.00	18.65
06	15.00	21.65
07	18.00	24.65
08	21.00	27.65
09	24.00	30.65
10	27.00	33.65
11	30.00	36.65
12	33.00	39.65

Material:

Housing: PA46,UL94V-0

Contact:Brass

Plating: Tin Plated

Electrical Characteristics:

Rated Current: 5.0AMP

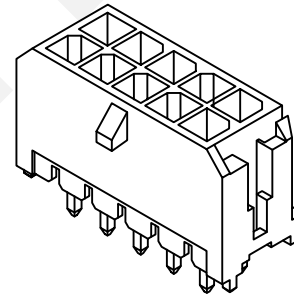
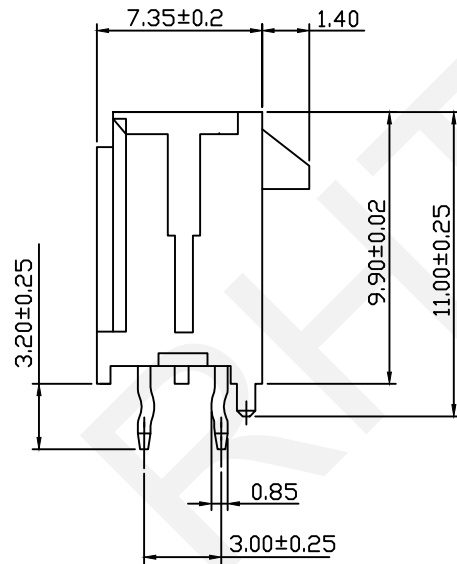
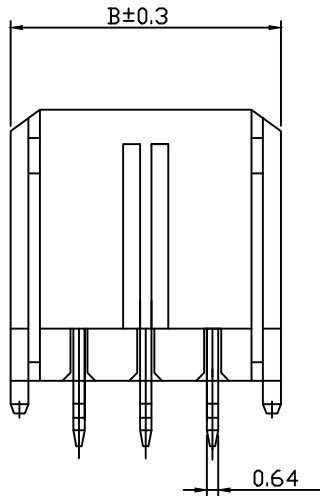
Voltage Rating: 250V AC,DC

Temperature Range: -25°C~+85°C

Insulator Resistance: 1000MΩ/Min.

Withstanding Voltage: 1500V AC/Minute

Contact Resistance: 10MΩ/Max



Order Information:

RHTAYM1-3.00-2x02-S

Pitch:3.00mm

Pins: _____

1-Single Layer

2-Double Layer

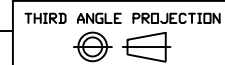
XX-No.of 01~12 Pins _____

Type: _____

S/SD-Straight Male Pin

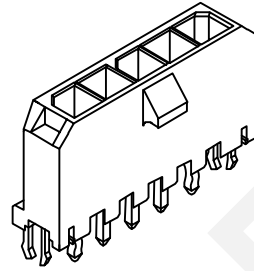
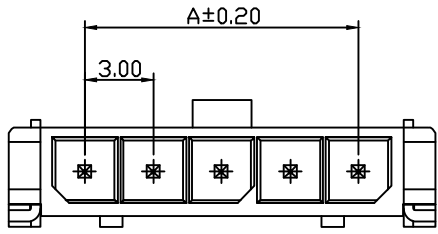
RHTECP NINGBO RHT ELECTRONIC CO.,LTD

UNITS:mm	SHEET SIZE: A4				SCALE:---	DRWN BY PAN
0~3	3~18	18~50	50~120	CHK'D BY FENG	3.0mm Pitch Micro Fit 3.0 43020 43025 43045 43030	
±0.12	±0.15	±0.3	±0.5	APPR BY ZHAN	43031 43645 43640 Wire To Board Connector	



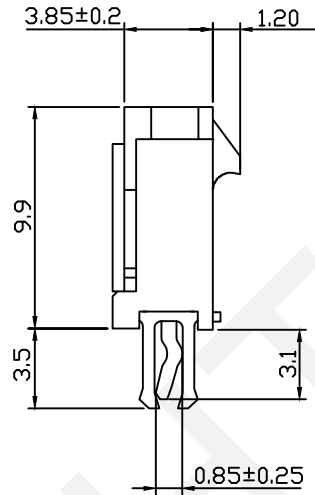
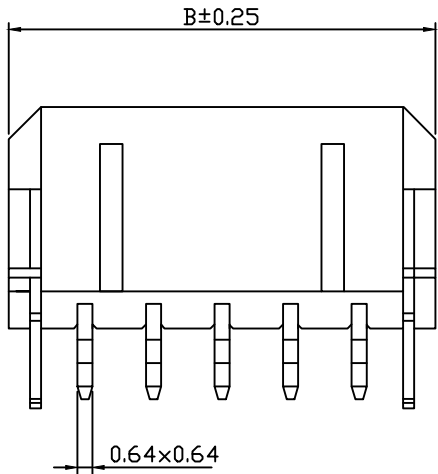
RHTAYM1-3.00-2x02-S

RoHS Compliance



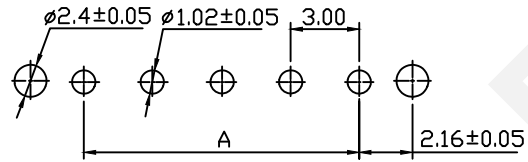
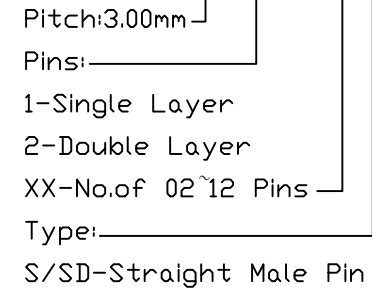
Material:
 Housing: LCP,UL94V-0
 Contact:Brass
 Plating: Tin Plated Or Gold Plated

Electrical Characteristics:
 Rated Current: 5.0AMP
 Voltage Rating: 250V AC,DC
 Temperature Range: -25°C~+85°C
 Insulator Resistance: 1000MΩ/Min.
 Withstanding Voltage: 1500V AC/Minute
 Contact Resistance: 10MΩ/Max



Order Information:
 RHTAYM1-3.00-1x02-SD

Pin	Dimensions(mm)	
	A	B
02	3.00	9.65
03	6.00	12.65
04	9.00	15.65
05	12.00	18.65
06	15.00	21.65
07	18.00	24.65
08	21.00	27.65
09	24.00	30.65
10	27.00	33.65
11	30.00	36.65
12	33.00	39.65



Recommended P.C.B.Layout
 Total Tolerance:±0.05mm

UNITS:mm	SHEET SIZE: A4	SCALE:---	DRWN BY PAN
0~3	3~18	18~50	50~120
±0.12	±0.15	±0.3	±0.5
CHK'D BY FENG		APPR BY ZHAN	

3.0mm Pitch Micro Fit 3.0 43020 43025 43045 43030 43031 43645 43640 Wire To Board Connector	
THIRD ANGLE PROJECTION	RHTAYM1-3.00-1x02-SD

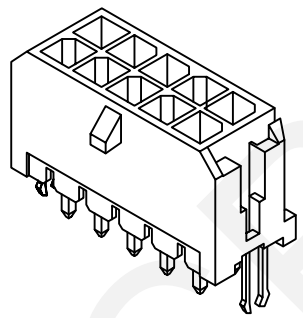
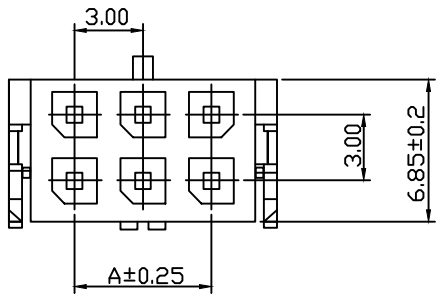


NINGBO RHT ELECTRONIC CO.,LTD

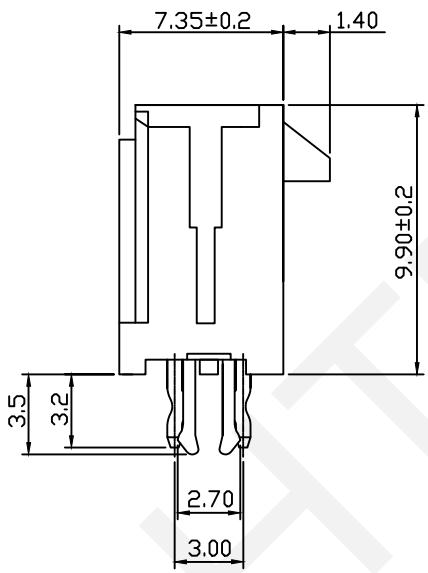
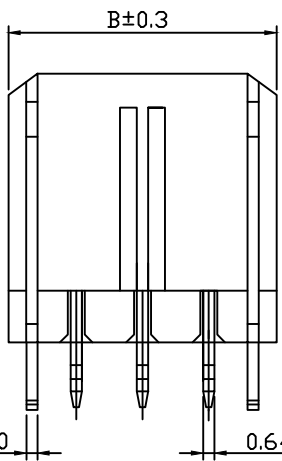


RHTAYM1-3.00-1x02-SD

RoHS Compliance

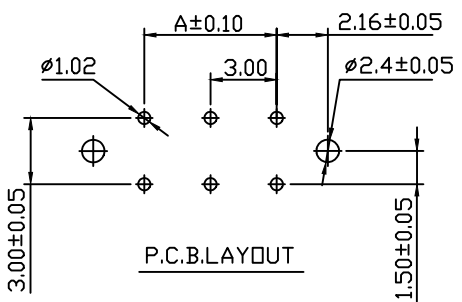
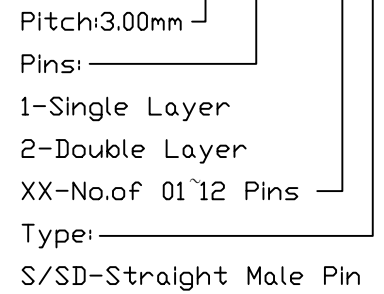


Material:
 Housing: LCP,UL94V-0
 Contact:Brass
 Plating: Tin Plated Over Ni
 Electrical Characteristics:
 Rated Current: 5.0AMP
 Voltage Rating: 250V AC,DC
 Temperature Range: -25°C~+85°C
 Insulator Resistance: 1000MΩ/Min.
 Withstanding Voltage: 1500V AC/Minute
 Contact Resistance: 10MΩ/Max



Order Information:
 RHTAYM1-3.00-2x02-SD

Pin	Dimensions(mm)	
	A	B
01	---	6.65
02	3.00	9.65
03	6.00	12.65
04	9.00	15.65
05	12.00	18.65
06	15.00	21.65
07	18.00	24.65
08	21.00	27.65
09	24.00	30.65
10	27.00	33.65
11	30.00	36.65
12	33.00	39.65



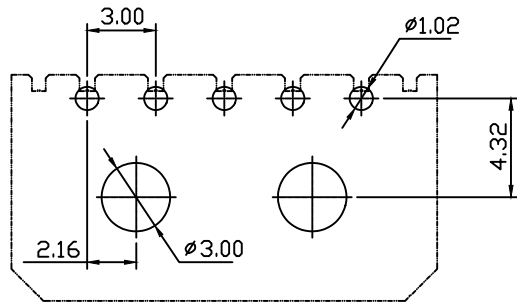
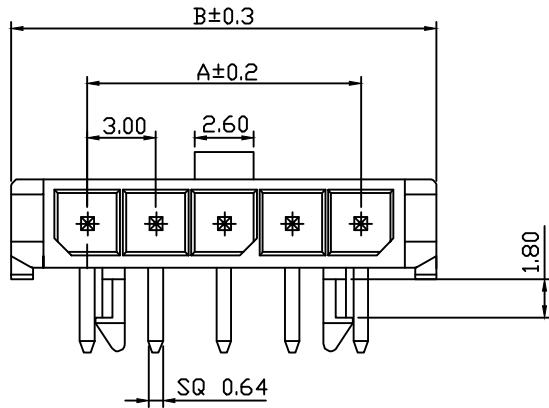
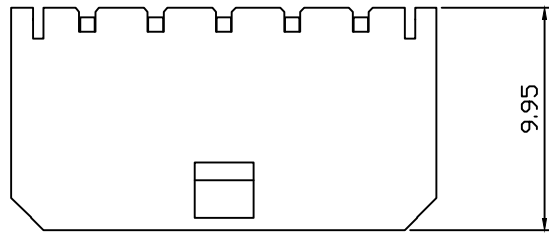
UNITS:mm	SHEET SIZE: A4	SCALE:---	DRWN BY PAN
0~3	3~18	18~50	50~120
±0.12	±0.15	±0.3	±0.5
CHK'D BY FENG		APPR BY ZHAN	

3.0mm Pitch Micro Fit 3.0 43020 43025 43045 43030
 43031 43645 43640 Wire To Board Connector
 THIRD ANGLE PROJECTION
 RHTAYM1-3.00-2x02-SD



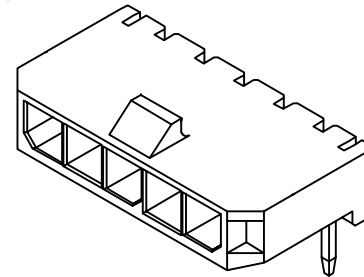
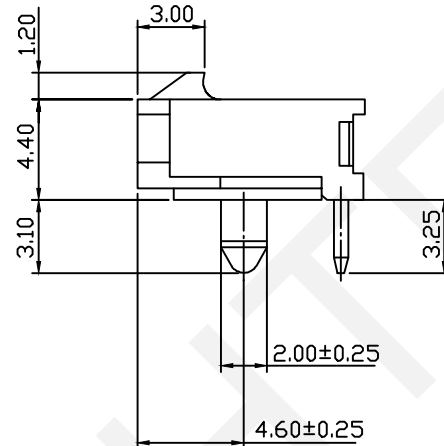
NINGBO RHT ELECTRONIC CO.,LTD

RoHS Compliance



Recommended P.C.B. Layout
Total Tolerance: ±0.05mm

Pin	Dimensions(mm)	
	A	B
02	3.00	9.65
03	6.00	12.65
04	9.00	15.65
05	12.00	18.65
06	15.00	21.65
07	18.00	24.65
08	21.00	27.65
09	24.00	30.65
10	27.00	33.65
11	30.00	36.65
12	33.00	39.65



Material:

Housing: PA9T,UL94V-0

Contact: Brass

Plating: Tin Plated Or Gold Plated

Electrical Characteristics:

Rated Current: 5.0AMP

Voltage Rating: 250V AC,DC

Temperature Range: -25°C~+85°C

Insulator Resistance: 1000MΩ/Min.

Withstanding Voltage: 1500V AC/Minute

Contact Resistance: 10MΩ/Max

Order Information:

RHTAYM1-3.00-1x02-R

Pitch: 3.00mm

Pins:

1-Single Layer

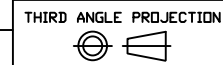
2-Double Layer

XX-No. of 02~12 Pins

Type:

R/RC-Right Angle Male Pin

UNITS:mm	SHEET SIZE: A4				SCALE:---	DRWN BY PAN
0~3	3~18	18~50	50~120	CHK'D BY FENG	3.0mm Pitch Micro Fit 3.0 43020 43025 43045 43030	
±0.12	±0.15	±0.3	±0.5	APPR BY ZHAN	43031 43645 43640 Wire To Board Connector	

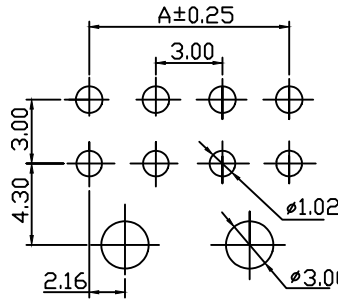
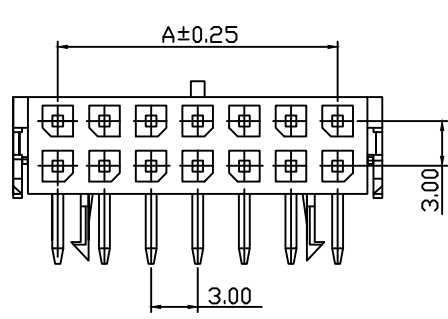


RHTAYM1-3.00-1x02-R

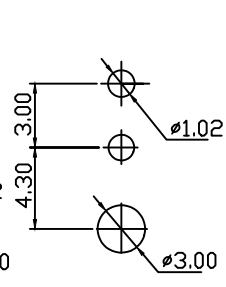
RHTECP NINGBO RHT ELECTRONIC CO.,LTD

3.0mm Pitch Micro Fit 3.0 43020 43025 43045 43030
43031 43645 43640 Wire To Board Connector

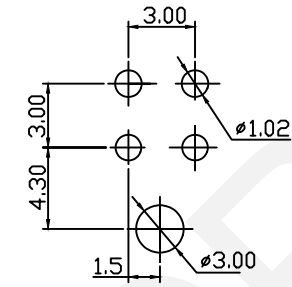
RoHS Compliance



2x4P~2x12P P.C.B.Layout

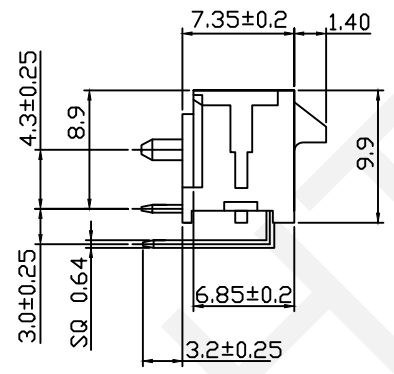
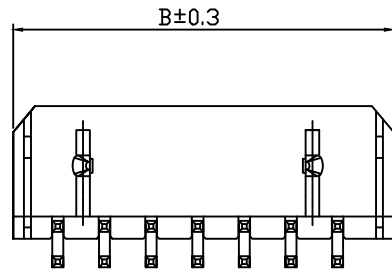


2x1P P.C.B.Layout



2x2P~2x3P P.C.B.Layout

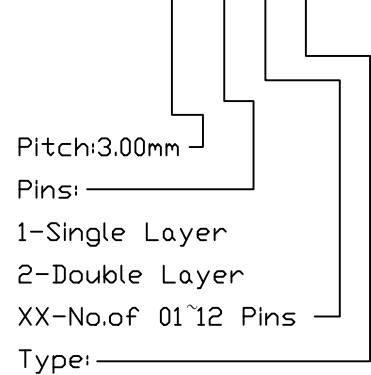
Material:
 Housing: PA46,UL94V-0
 Contact:Brass
 Plating: Tin Plated
 Electrical Characteristics:
 Rated Current: 5.0AMP
 Voltage Rating: 250V AC,DC
 Temperature Range: -25°C~+85°C
 Insulator Resistance: 1000MΩ/Min.
 Withstanding Voltage: 1500V AC/Minute
 Contact Resistance: 10MΩ/Max



Pin	Dimensions(mm)	
	A	B
01	---	6.65
02	3.00	9.65
03	6.00	12.65
04	9.00	15.65
05	12.00	18.65
06	15.00	21.65
07	18.00	24.65
08	21.00	27.65
09	24.00	30.65
10	27.00	33.65
11	30.00	36.65
12	33.00	39.65

Order Information:

RHTAYM1-3.00-2x02-R



Pitch:3.00mm

Pins:

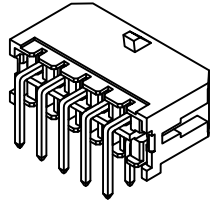
1-Single Layer

2-Double Layer

XX-No.of 01~12 Pins

Type:

R/RC-Right Angle Male Pin

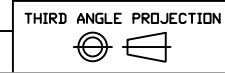


NINGBO RHT ELECTRONIC CO.,LTD

UNITS:mm	SHEET SIZE: A4	SCALE:---	DRWN BY PAN
0~3	3~18	18~50	50~120
±0.12	±0.15	±0.3	±0.5

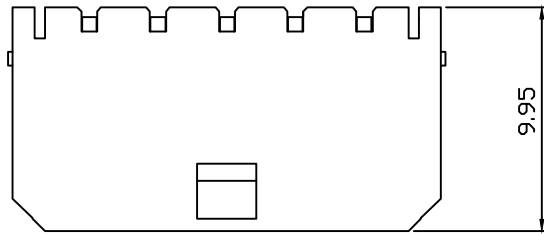
CHK'D BY FENG
 APPR BY ZHAN

3.0mm Pitch Micro Fit 3.0 43020 43025 43045 43030
 43031 43645 43640 Wire To Board Connector



RHTAYM1-3.00-2x02-R

RoHS Compliance



Pin	Dimensions(mm)	
	A	B
02	3.00	9.65
03	6.00	12.65
04	9.00	15.65
05	12.00	18.65
06	15.00	21.65
07	18.00	24.65
08	21.00	27.65
09	24.00	30.65
10	27.00	33.65
11	30.00	36.65
12	33.00	39.65

Material:

Housing: LCP,UL94V-0

Contact:Brass

Plating: Tin Plated Or Gold Plated

Electrical Characteristics:

Rated Current: 5.0AMP

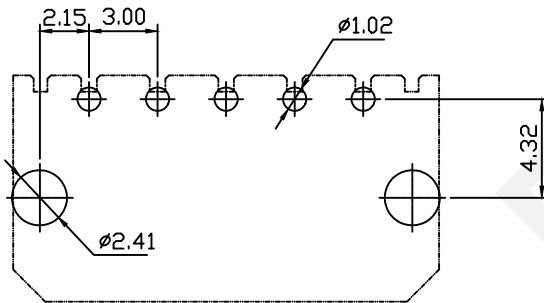
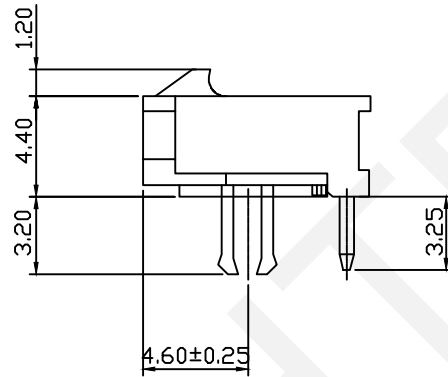
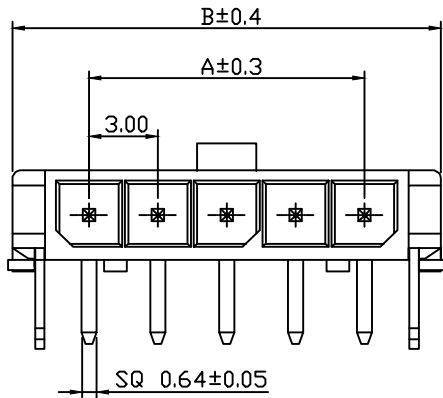
Voltage Rating: 250V AC,DC

Temperature Range: -25°C~+85°C

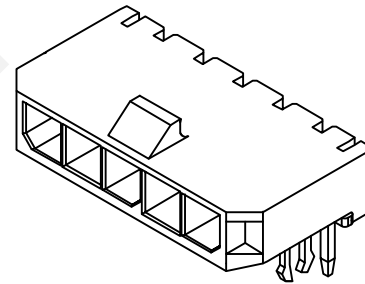
Insulator Resistance: 1000MΩ/Min.

Withstanding Voltage: 1500V AC/Minute

Contact Resistance: 10MΩ/Max



Recommended P.C.B.Layout
Total Tolerance:±0.05mm



Order Information:

RHTAYM1-3.00-1x02-RC

Pitch:3.00mm

Pins:

1-Single Layer

2-Double Layer

XX-No.of 02~12 Pins

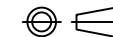
Type:

R/RC-Right Angle Male Pin

UNITS:mm	SHEET SIZE: A4	SCALE:---	DRWN BY PAN
0~3	3~18	18~50	50~120
±0.12	±0.15	±0.3	±0.5
CHK'D BY FENG		APPR BY ZHAN	

3.0mm Pitch Micro Fit 3.0 43020 43025 43045 43030
43031 43645 43640 Wire To Board Connector

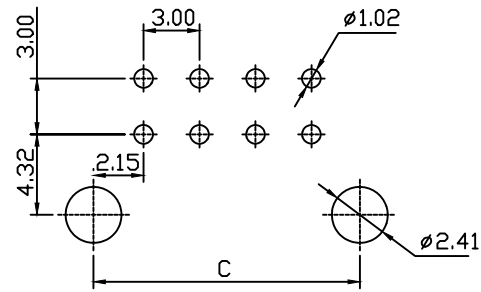
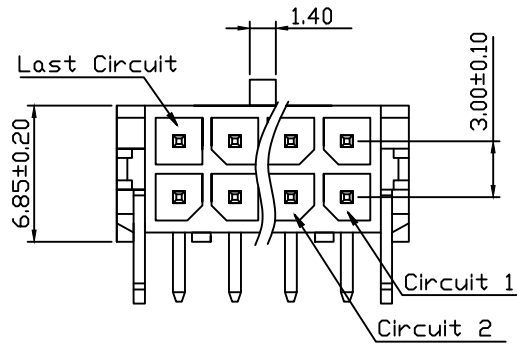
THIRD ANGLE PROJECTION



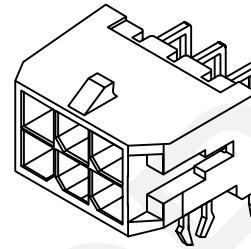
RHTAYM1-3.00-1x02-RC

RHTECP NINGBO RHT ELECTRONIC CO.,LTD

RoHS Compliance



Recommended P.C.B. Layout
Total Tolerance: ±0.05mm



Material:

Housing: PA46,UL94V-0

Contact: Brass

Plating: Tin Plated

Electrical Characteristics:

Rated Current: 5.0AMP

Voltage Rating: 250V AC,DC

Temperature Range: -25°C~+85°C

Insulator Resistance: 1000MΩ/Min.

Withstanding Voltage: 1500V AC/Minute

Contact Resistance: 10MΩ/Max

Order Information:

RHTAYM1-3.00-2x02-RC

Pitch: 3.00mm

Pins:

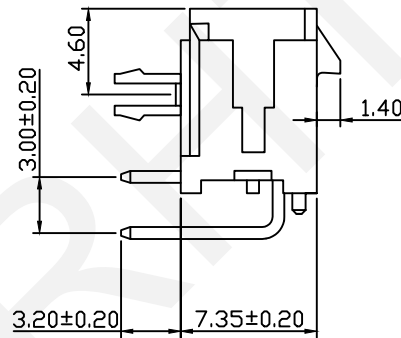
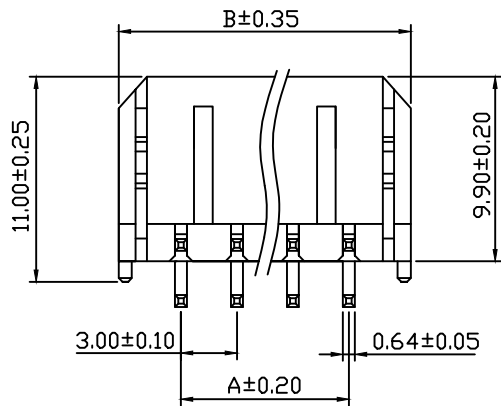
1-Single Layer

2-Double Layer

XX-No. of 01~12 Pins

Type:

R/RC-Right Angle Male Pin



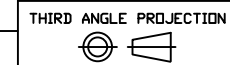
Pin	Dimensions(mm)		
	A	B	C
01	---	6.65	4.30
02	3.00	9.65	7.30
03	6.00	12.65	10.30
04	9.00	15.65	13.30
05	12.00	18.65	16.30
06	15.00	21.65	19.30
07	18.00	24.65	22.30
08	21.00	27.65	25.30
09	24.00	30.65	28.30
10	27.00	33.65	31.30
11	30.00	36.65	34.30
12	33.00	39.65	37.30

RHTECP NINGBO RHT ELECTRONIC CO.,LTD

UNITS:mm	SHEET SIZE: A4	SCALE:---	DRWN BY PAN
0~3	3~18	18~50	50~120
±0.12	±0.15	±0.3	±0.5

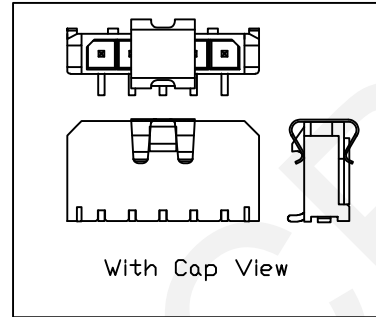
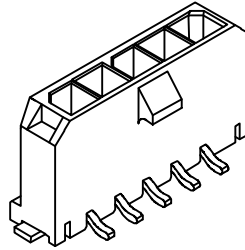
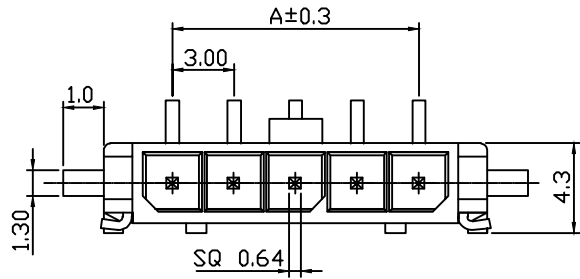
CHK'D BY FENG
APPR BY ZHAN

3.0mm Pitch Micro Fit 3.0 43020 43025 43045 43030
43031 43645 43640 Wire To Board Connector



RHTAYM1-3.00-2x02-RC

RoHS Compliance



Material:

Housing: LCP,UL94V-0

Contact:Brass

Plating: Tin Plated

Electrical Characteristics:

Rated Current: 5.0AMP

Voltage Rating: 250V AC,DC

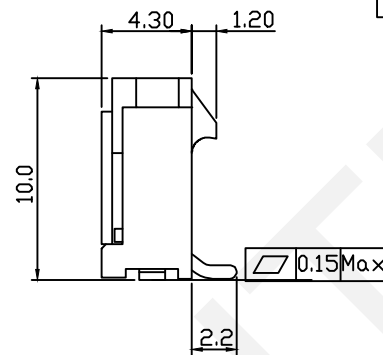
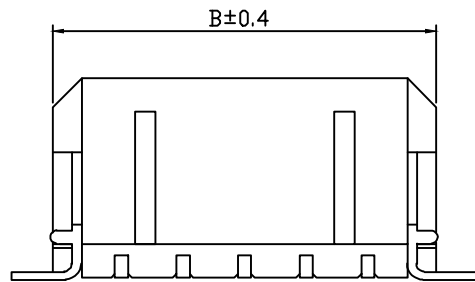
Temperature Range: -25°C~+85°C

Insulator Resistance: 1000MΩ/Min.

Withstanding Voltage: 1500V AC/Minute

Contact Resistance: 10MΩ/Max

C



Order Information:

RHTAYM1-3.00-1x02-VT

Pin	Dimensions(mm)	
	A	B
02	3.00	9.70
03	6.00	12.70
04	9.00	15.70
05	12.00	18.70
06	15.00	21.70
07	18.00	24.70
08	21.00	27.70
09	24.00	30.70
10	27.00	33.70
11	30.00	36.70
12	33.00	39.70

Pitch:3.00mm

Pins:

1-Single Layer

2-Double Layer

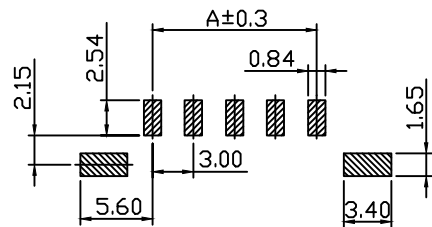
XX-No.of 02~12 Pins

Type:

VT/VMT-Vertical SMT Pin

RT/RMT-Horizontal SMT Pin

E



P.C.B.LAYOUT

F



NINGBO RHT ELECTRONIC CO.,LTD

UNITS:mm

SHEET SIZE: A4

SCALE:---

DRWN BY PAN

3.0mm Pitch Micro Fit 3.0 43020 43025 43045 43030
43031 43645 43640 Wire To Board Connector

0~3

3~18

18~50

50~120

CHK'D BY FENG

THIRD ANGLE PROJECTION



RHTAYM1-3.00-1x02-VT

±0.12

±0.15

±0.3

±0.5

APPR BY ZHAN

G

G

1

2

3

4

5

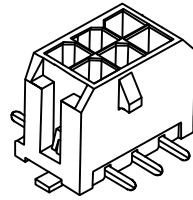
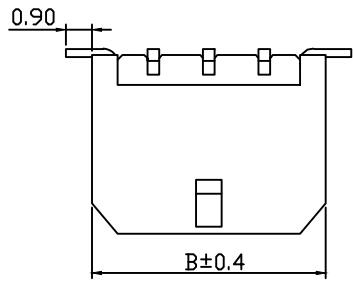
6

7

8

9

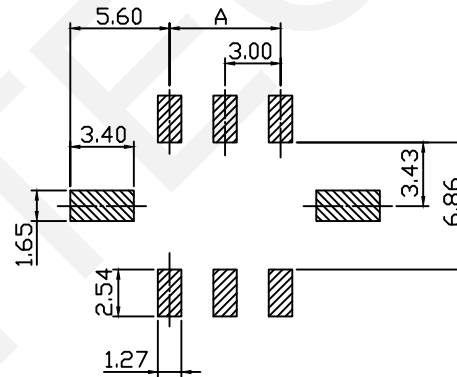
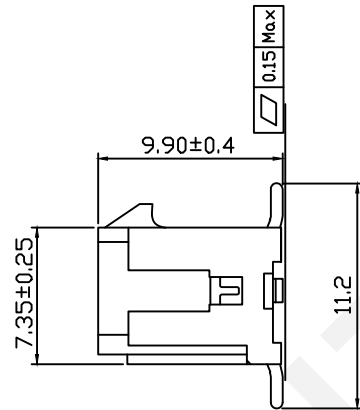
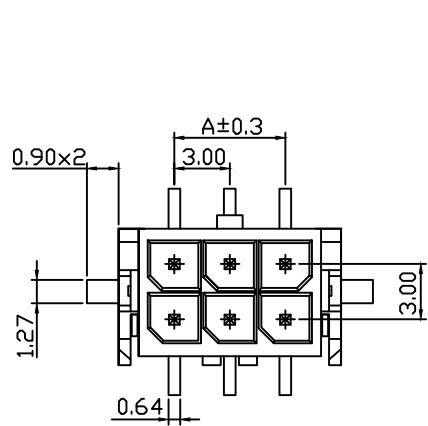
RoHS Compliance



Pin	Dimensions(mm)	
	A	B
01	---	6.65
02	3.00	9.65
03	6.00	12.65
04	9.00	15.65
05	12.00	18.65
06	15.00	21.65
07	18.00	24.65
08	21.00	27.65
09	24.00	30.65
10	27.00	33.65
11	30.00	36.65
12	33.00	39.65

Material:
 Housing: LCP,UL94V-0
 Contact:Brass
 Plating: Tin Plated

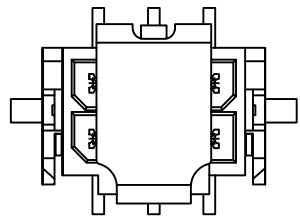
Electrical Characteristics:
 Rated Current: 5.0AMP
 Voltage Rating: 250V AC,DC
 Temperature Range: -25°C~+85°C
 Insulator Resistance: 1000MΩ/Min.
 Withstanding Voltage: 1500V AC/Minute
 Contact Resistance: 10MΩ/Max



P.C.B.LAYOUT

Order Information:
 RHTAYM1-3.00-2x02-VT

Pitch:3.00mm
 Pins: _____
 1-Single Layer
 2-Double Layer
 XX-No.of 01~12 Pins
 Type: _____
 VT/VMT-Vertical SMT Pin
 RT/RMT-Horizontal SMT Pin



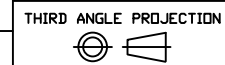
WITH COVER

RHTECP NINGBO RHT ELECTRONIC CO.,LTD

UNITS:mm	SHEET SIZE: A4	SCALE:---	DRWN BY PAN
0~3	3~18	18~50	50~120
±0.12	±0.15	±0.3	±0.5

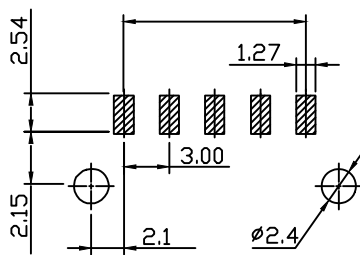
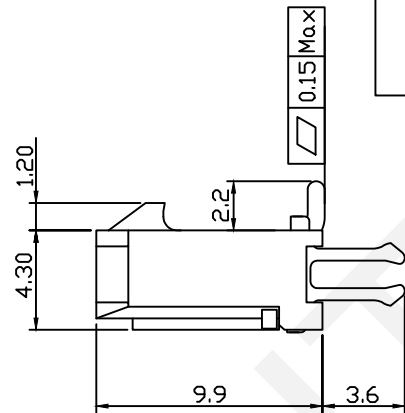
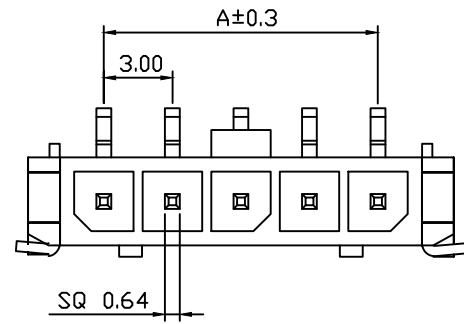
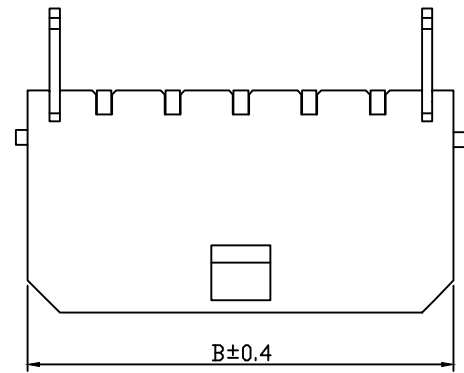
CHK'D BY FENG
 APPR BY ZHAN

3.0mm Pitch Micro Fit 3.0 43020 43025 43045 43030
 43031 43645 43640 Wire To Board Connector

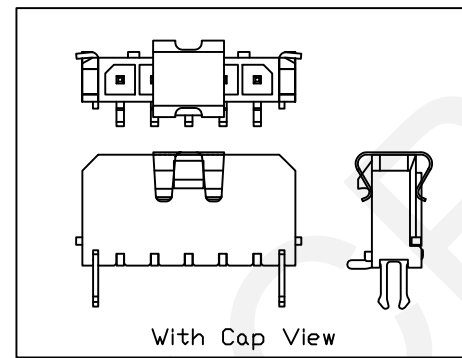
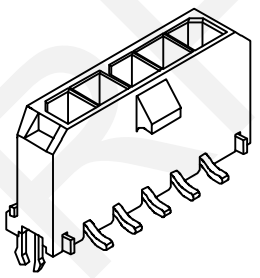


RHTAYM1-3.00-2x02-VT

RoHS Compliance



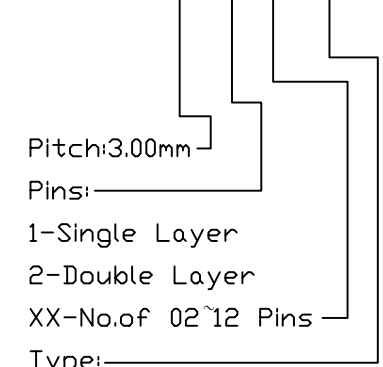
P.C.B.LAYOUT



Pin	Dimensions(mm)	
	A	B
02	3.00	9.70
03	6.00	12.70
04	9.00	15.70
05	12.00	18.70
06	15.00	21.70
07	18.00	24.70
08	21.00	27.70
09	24.00	30.70
10	27.00	33.70
11	30.00	36.70
12	33.00	39.70

Material:
Housing: LCP,UL94V-0
Contact:Brass
Plating: Tin Plated
Electrical Characteristics:
Rated Current: 5.0AMP
Voltage Rating: 250V AC,DC
Temperature Range: -25°C~+85°C
Insulator Resistance: 1000MΩ/Min.
Withstanding Voltage: 1500V AC/Minute
Contact Resistance: 10MΩ/Max

Order Information:
RHTAYM1-3.00-1x02-VMT



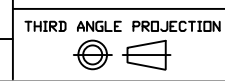
Pitch:3.00mm
Pins: _____
1-Single Layer
2-Double Layer
XX-No.of 02~12 Pins
Type: _____
VT/VMT-Vertical SMT Pin
RT/RMT-Horizontal SMT Pin

RHTECP NINGBO RHT ELECTRONIC CO.,LTD

UNITS:mm	SHEET SIZE: A4	SCALE:---	DRWN BY PAN
0~3	3~18	18~50	50~120
±0.12	±0.15	±0.3	±0.5

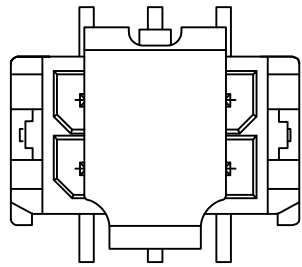
CHK'D BY FENG
APPR BY ZHAN

3.0mm Pitch Micro Fit 3.0 43020 43025 43045 43030
43031 43645 43640 Wire To Board Connector

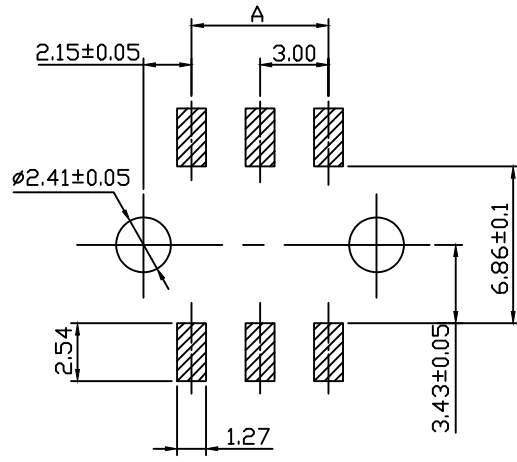
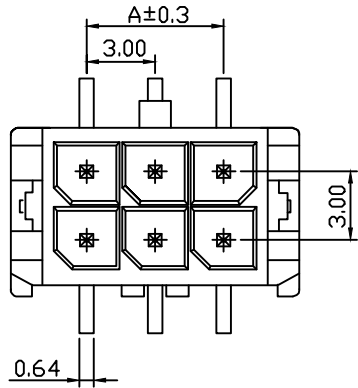
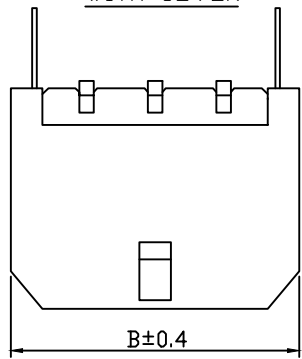


RHTAYM1-3.00-1x02-VMT

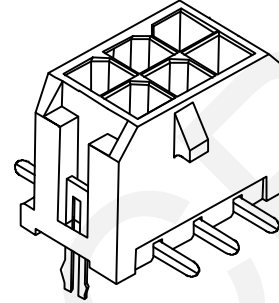
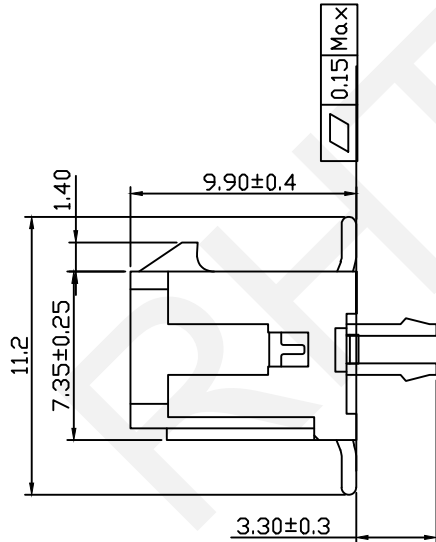
RoHS Compliance



WITH COVER



P.C.B.LAYOUT



Material:

Housing: LCP,UL94V-0

Contact:Brass

Plating: Tin Plated

Electrical Characteristics:

Rated Current: 5.0AMP

Voltage Rating: 250V AC,DC

Temperature Range: -25°C~+85°C

Insulator Resistance: 1000MΩ/Min.

Withstanding Voltage: 1500V AC/Minute

Contact Resistance: 10MΩ/Max

Order Information:

RHTAYM1-3.00-2x02-VMT

Pin	Dimensions(mm)	
	A	B
01	---	6.65
02	3.00	9.65
03	6.00	12.65
04	9.00	15.65
05	12.00	18.65
06	15.00	21.65
07	18.00	24.65
08	21.00	27.65
09	24.00	30.65
10	27.00	33.65
11	30.00	36.65
12	33.00	39.65

Pitch:3.00mm

Pins:

1-Single Layer

2-Double Layer

XX-No.of 01~12 Pins

Type:

VT/VMT-Vertical SMT Pin

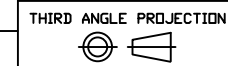
RT/RMT-Horizontal SMT Pin

RHTECP NINGBO RHT ELECTRONIC CO.,LTD

UNITS:mm	SHEET SIZE: A4	SCALE:---	DRWN BY PAN
0~3	3~18	18~50	50~120
±0.12	±0.15	±0.3	±0.5

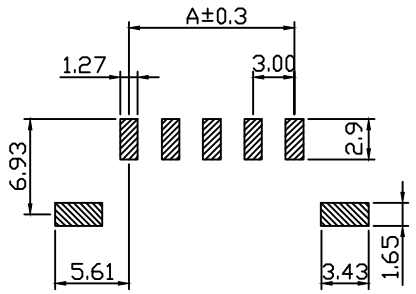
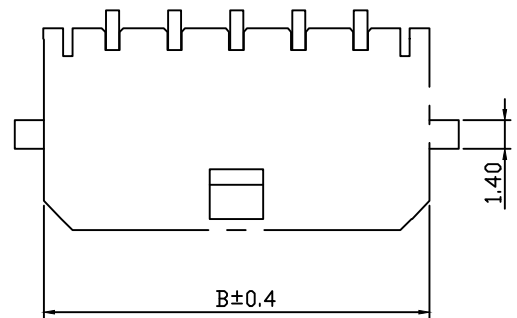
CHK'D BY FENG
APPR BY ZHAN

3.0mm Pitch Micro Fit 3.0 43020 43025 43045 43030
43031 43645 43640 Wire To Board Connector

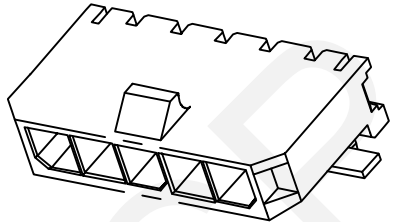


RHTAYM1-3.00-2x02-VMT

RoHS Compliance



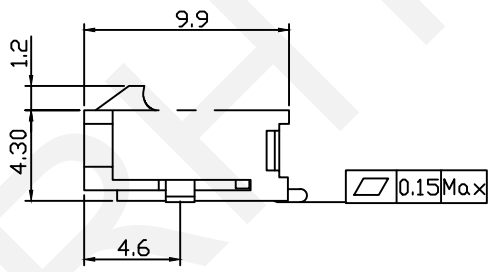
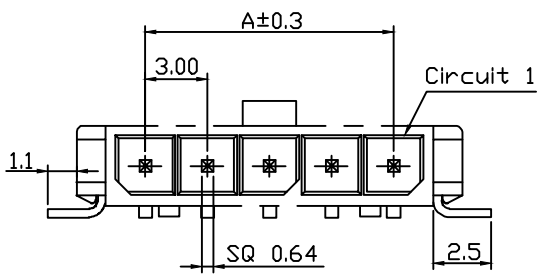
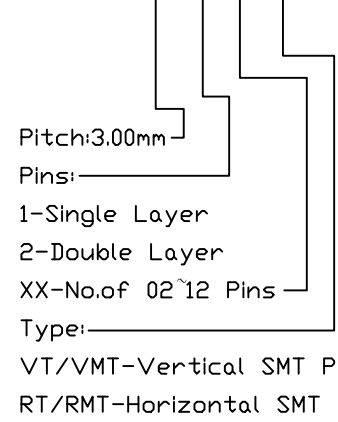
P.C.B.LAYOUT



Material:
 Housing: LCP,UL94V-0
 Contact:Brass
 Plating: Tin Plated
 Electrical Characteristics:
 Rated Current: 5.0AMP
 Voltage Rating: 250V AC,DC
 Temperature Range: -25°C~+85°C
 Insulator Resistance: 1000MΩ/Min.
 Withstanding Voltage: 1500V AC/Minute
 Contact Resistance: 10MΩ/Max

Pin	Dimensions(mm)	
	A	B
02	3.00	9.70
03	6.00	12.70
04	9.00	15.70
05	12.00	18.70
06	15.00	21.70
07	18.00	24.70
08	21.00	27.70
09	24.00	30.70
10	27.00	33.70
11	30.00	36.70
12	33.00	39.70

Order Information:
 RHTAYM1-3.00-1x02-RT

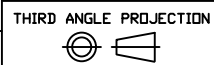


NINGBO RHT ELECTRONIC CO.,LTD

UNITS:mm	SHEET SIZE: A4	SCALE:---	DRWN BY PAN
0~3	3~18	18~50	50~120
±0.12	±0.15	±0.3	±0.5

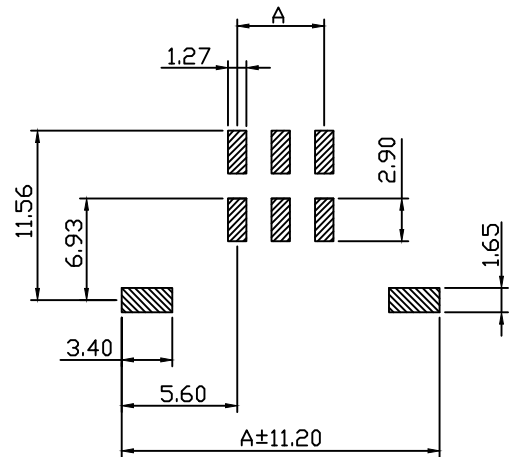
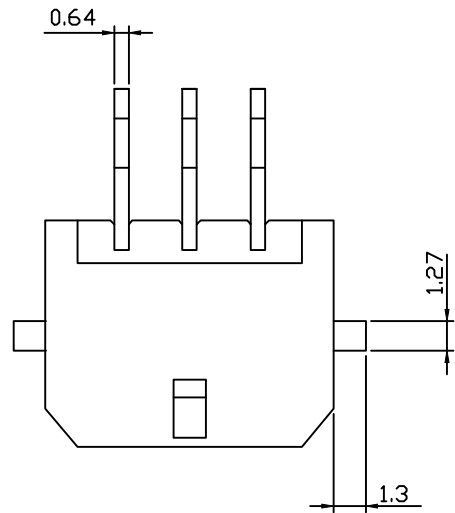
CHK'D BY FENG
 APPR BY ZHAN

3.0mm Pitch Micro Fit 3.0 43020 43025 43045 43030
 43031 43645 43640 Wire To Board Connector



RHTAYM1-3.00-1x02-RT

RoHS Compliance



Pin	Dimensions(mm)	
	A	B
01	---	6.65
02	3.00	9.65
03	6.00	12.65
04	9.00	15.65
05	12.00	18.65
06	15.00	21.65
07	18.00	24.65
08	21.00	27.65
09	24.00	30.65
10	27.00	33.65
11	30.00	36.65
12	33.00	39.65

P.C.B.LAYOUT

Material:

Housing: LCP,UL94V-0

Contact:Brass

Plating: Tin Plated

Electrical Characteristics:

Rated Current: 5.0AMP

Voltage Rating: 250V AC,DC

Temperature Range: -25°C~+85°C

Insulator Resistance: 1000MΩ/Min.

Withstanding Voltage: 1500V AC/Minute

Contact Resistance: 10MΩ/Max

Order Information:

RHTAYM1-3.00-2x02-RT

Pitch:3.00mm

Pins:

1-Single Layer

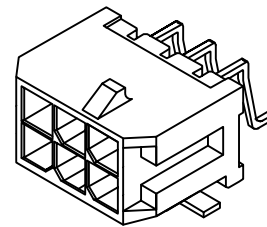
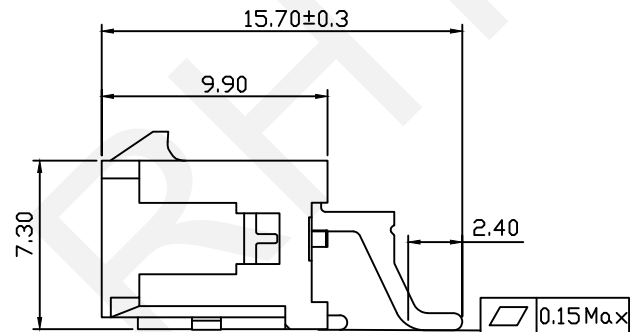
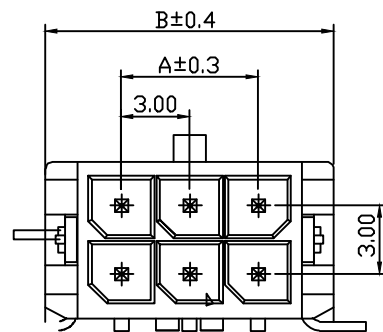
2-Double Layer

XX-No.of 01~12 Pins

Type:

VT/VMT-Vertical SMT Pin

RT/RMT-Horizontal SMT Pin

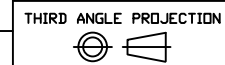


RHTECP NINGBO RHT ELECTRONIC CO.,LTD

UNITS:mm	SHEET SIZE: A4	SCALE:---	DRWN BY PAN
0~3	3~18	18~50	50~120
±0.12	±0.15	±0.3	±0.5

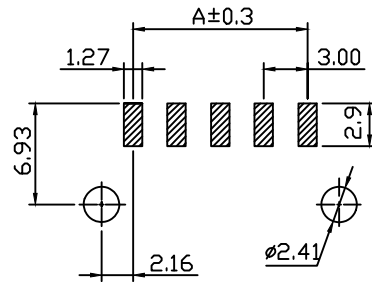
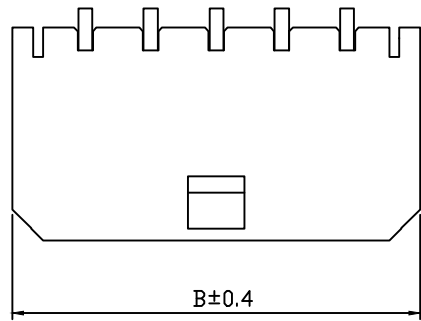
CHK'D BY FENG
APPR BY ZHAN

3.0mm Pitch Micro Fit 3.0 43020 43025 43045 43030
43031 43645 43640 Wire To Board Connector

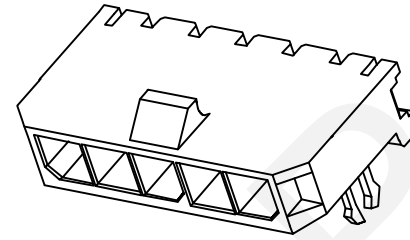


RHTAYM1-3.00-2x02-RT

RoHS Compliance



P.C.B.LAYOUT



Material:
 Housing: LCP,UL94V-0
 Contact:Brass
 Plating: Tin Plated
 Electrical Characteristics:
 Rated Current: 5.0AMP
 Voltage Rating: 250V AC,DC
 Temperature Range: -25°C~+85°C
 Insulator Resistance: 1000M Ω /Min.
 Withstanding Voltage: 1500V AC/Minute
 Contact Resistance: 10M Ω /Max

Order Information:

RHTAYM1-3.00-1x02-RMT

Pitch:3.00mm

Pins:

1-Single Layer

2-Double Layer

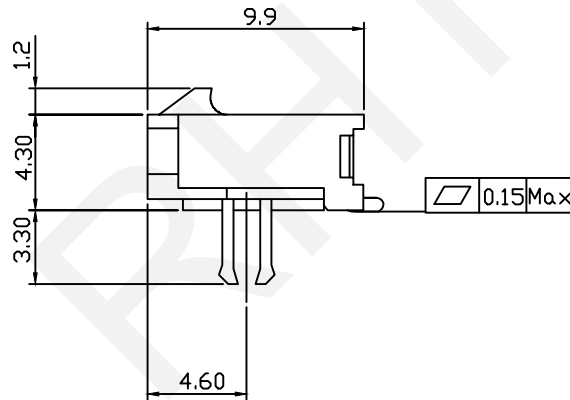
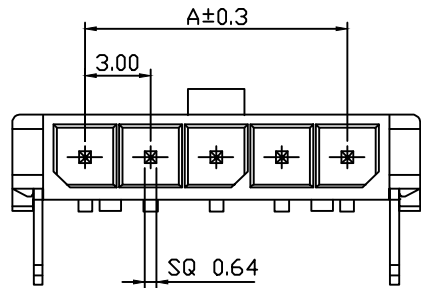
XX-No.of 02~12 Pins

Type:

VT/VMT-Vertical SMT Pin

RT/RMT-Horizontal SMT Pin

Pin	Dimensions(mm)	
	A	B
02	3.00	9.70
03	6.00	12.70
04	9.00	15.70
05	12.00	18.70
06	15.00	21.70
07	18.00	24.70
08	21.00	27.70
09	24.00	30.70
10	27.00	33.70
11	30.00	36.70
12	33.00	39.70



RHTECP NINGBO RHT ELECTRONIC CO.,LTD

UNITS:mm SHEET SIZE: A4 SCALE:---
 0~3 3~18 18~50 50~120
 ±0.12 ±0.15 ±0.3 ±0.5

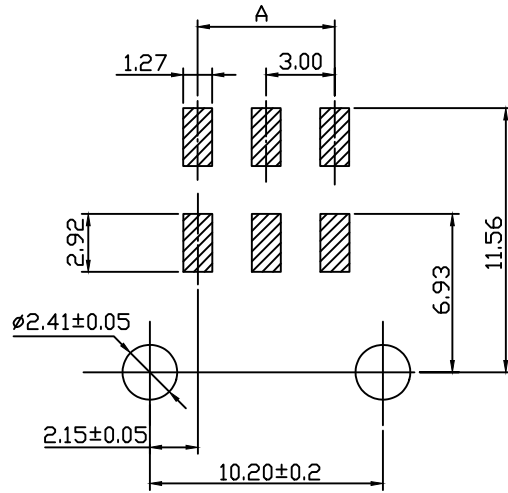
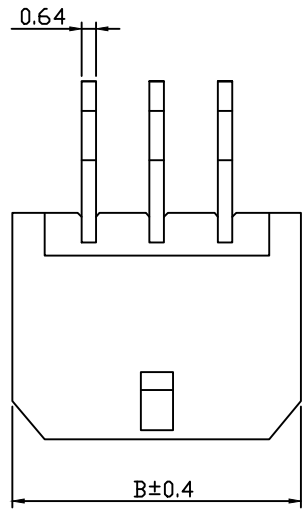
DRWN BY PAN
 CHK'D BY FENG
 APPR BY ZHAN

3.0mm Pitch Micro Fit 3.0 43020 43025 43045 43030
 43031 43645 43640 Wire To Board Connector

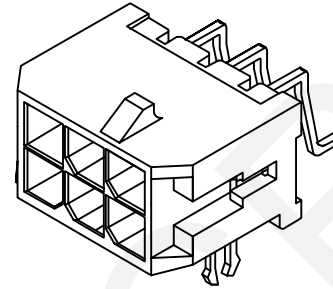
THIRD ANGLE PROJECTION

RHTAYM1-3.00-1x02-RMT

RoHS Compliance

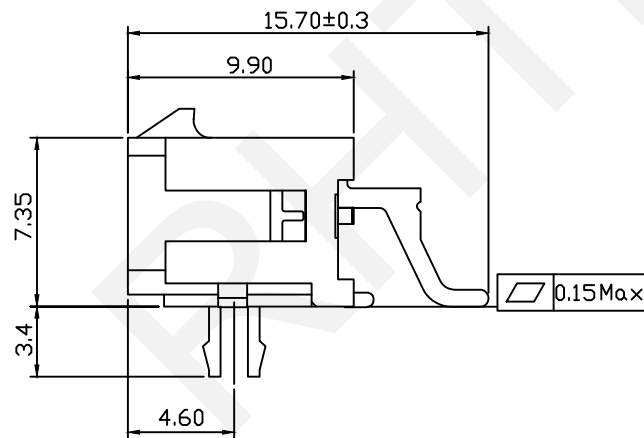
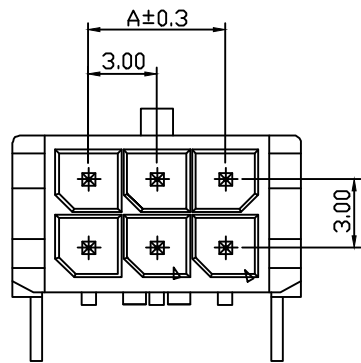


P.C.B.LAYOUT



Material:
 Housing: LCP,UL94V-0
 Contact: Brass
 Plating: Tin Plated
 Electrical Characteristics:
 Rated Current: 5.0AMP
 Voltage Rating: 250V AC,DC
 Temperature Range: -25°C~+85°C
 Insulator Resistance: 1000MΩ/Min.
 Withstanding Voltage: 1500V AC/Minute
 Contact Resistance: 10MΩ/Max

Order Information:
 RHTAYM1-3.00-2x02-RMT



Pin	Dimensions(mm)	
	A	B
01	---	6.65
02	3.00	9.65
03	6.00	12.65
04	9.00	15.65
05	12.00	18.65
06	15.00	21.65
07	18.00	24.65
08	21.00	27.65
09	24.00	30.65
10	27.00	33.65
11	30.00	36.65
12	33.00	39.65

Pitch: 3.00mm
 Pins:
 1-Single Layer
 2-Double Layer
 XX-No.of 01~12 Pins
 Type:
 VT/VMT-Vertical SMT Pin
 RT/RMT-Horizontal SMT Pin

NINGBO RHT ELECTRONIC CO.,LTD

UNITS:mm	SHEET SIZE: A4			SCALE:---	DRWN BY PAN
0~3	3~18	18~50	50~120	CHK'D BY FENG	
±0.12	±0.15	±0.3	±0.5	APPR BY ZHAN	

3.0mm Pitch Micro Fit 3.0 43020 43025 43045 43030 43031 43645 43640 Wire To Board Connector
 THIRD ANGLE PROJECTION

 RHTAYM1-3.00-2x02-RMT