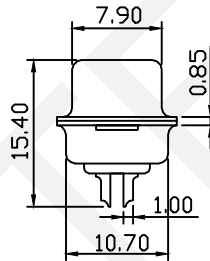
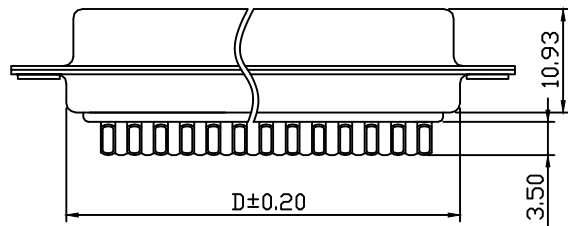
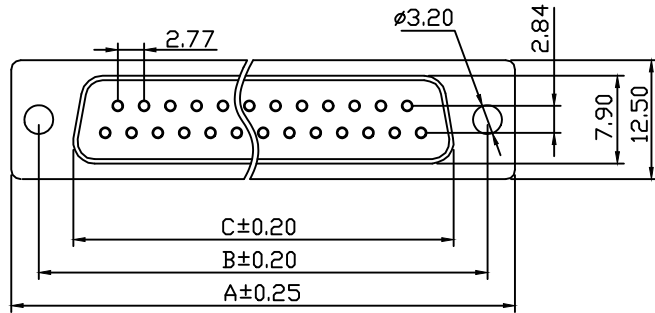


RoHS Compliant



Material:

Housing: PBT+30% Glass Filled, UL94V-0

Contacts: Brass,

Gold Plating On Contact Area,

Tin On Solder Tail.

Shell: Steel,

Front Shell Nickel Plating,

Back Shell Tin Plating

Electrical Characteristics:

Current Rating: 5AMP

Insulator Resistance: 1000MΩ Min. at DC 500V

Withstanding Voltage: 500V AC (rms) For 1 Minute

Contact Resistance: 20MΩ Max. Initial

Operating Temperature: -55°C ~ +105°C

Order Information:

RHTAY25-XX-F-L

D-SUB Connector,

2 Row Solder Type

Traditional Terminal

XX-No. of 09, 15, 25, 37, 50 Pins

Connector Type:

M-Male F-Female,

Housing Color:

L-Blue B-Black W-White

| Number Of Contacts | DIMENSION |        |        |        |
|--------------------|-----------|--------|--------|--------|
|                    | A±0.25    | B±0.20 | C±0.20 | D±0.20 |
| 09                 | 30.80     | 25.00  | 16.50  | 19.10  |
| 15                 | 39.20     | 33.32  | 24.70  | 27.50  |
| 25                 | 53.04     | 47.04  | 38.50  | 41.30  |
| 37                 | 69.40     | 63.50  | 54.80  | 57.70  |

|          |                |           |             |
|----------|----------------|-----------|-------------|
| UNITS:mm | SHEET SIZE: A4 | SCALE:--- | DRWN BY PAN |
| 0~3      | 3~18           | 18~50     | 50~120      |
| ±0.12    | ±0.15          | ±0.3      | ±0.5        |

|               |
|---------------|
| CHK'D BY FENG |
| APPR BY ZHAN  |

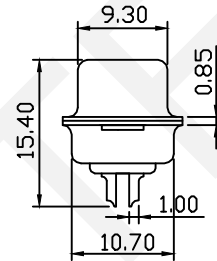
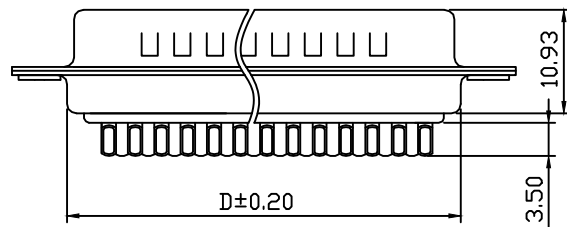
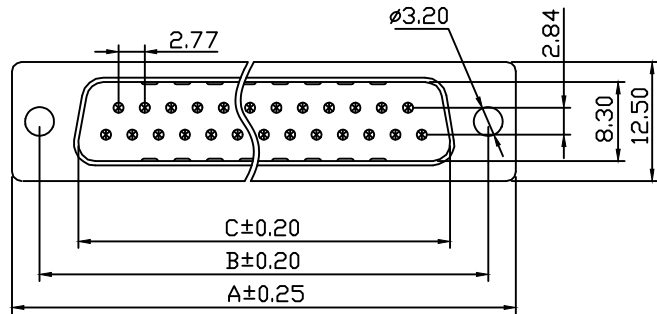
|  |                |
|--|----------------|
| D-SUB Connector, Traditional TERM, Solder Type, Female |                |
| THIRD ANGLE PROJECTION                                 | RHTAY25-XX-F-L |



NINGBO RHT ELECTRONIC CO., LTD



RoHS Compliant



Material:

Housing: PBT+30% Glass Filled, UL94V-0

Contacts: Brass,

Gold Plating On Contact Area,

Tin On Solder Tail.

Shell: Steel,

Front Shell Nickel Plating,

Back Shell Tin Plating

Electrical Characteristics:

Current Rating: 5AMP

Insulator Resistance: 1000MΩ Min. at DC 500V

Withstanding Voltage: 500V AC (rms) For 1 Minute

Contact Resistance: ≤20MΩ Max. Initial

Operating Temperature: -55°C ~ +105°C

Order Information:

RHTAY25-XX-M-L

D-SUB Connector,

2 Row Solder Type

Traditional Terminal

XX-No. of 09, 15, 25, 37, 50 Pins

Connector Type:

M-Male F-Female,

Housing Color:

L-Blue B-Black W-White

| Number Of Contacts | DIMENSION |        |        |        |
|--------------------|-----------|--------|--------|--------|
|                    | A±0.25    | B±0.20 | C±0.20 | D±0.20 |
| 09                 | 30.80     | 25.00  | 17.79  | 19.10  |
| 15                 | 39.20     | 33.32  | 25.30  | 27.50  |
| 25                 | 53.04     | 47.04  | 38.96  | 41.30  |
| 37                 | 69.40     | 63.50  | 54.40  | 57.70  |

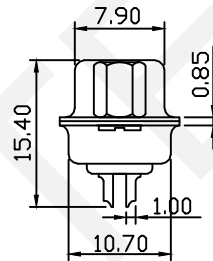
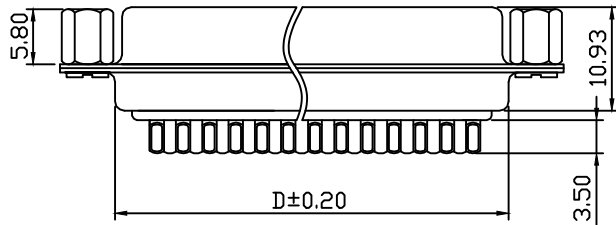
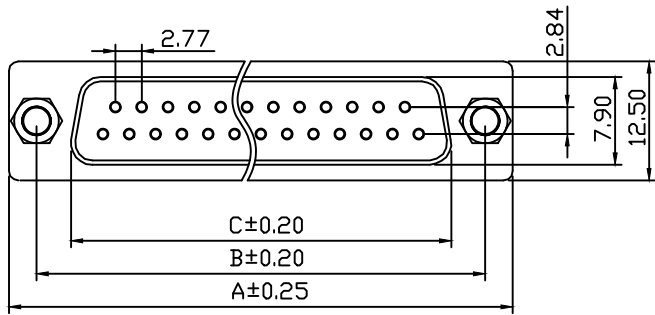
|          |                |            |             |
|----------|----------------|------------|-------------|
| UNITS:mm | SHEET SIZE: A4 | SCALE:---- | DRWN BY PAN |
| 0~3      | 3~18           | 18~50      | 50~120      |
| ±0.12    | ±0.15          | ±0.3       | ±0.5        |

|               |              |
|---------------|--------------|
| CHK'D BY FENG | APPR BY ZHAN |
|---------------|--------------|

|  |                |
|--|----------------|
| D-SUB Connector, Traditional TERM, Solder Type, Male |                |
| THIRD ANGLE PROJECTION                               | RHTAY25-XX-M-L |

 NINGBO RHT ELECTRONIC CO.,LTD

RoHS Compliant



**Material:**

Housing: PBT+30% Glass Filled, UL94V-0

Contacts: Brass,

Gold Plating On Contact Area,

Tin On Solder Tail.

Shell: Steel,

Front Shell Nickel Plating,

Back Shell Tin Plating

**Electrical Characteristics:**

Current Rating: 5AMP

Insulator Resistance: 1000MΩ Min. at DC 500V

Withstanding Voltage: 500V AC (rms) For 1 Minute

Contact Resistance: ≤20MΩ Max. Initial

Operating Temperature: -55°C ~ +105°C

**Order Information:**

RHTAY25A-XX-F-L

D-SUB Connector,

2 Row Solder Type

Riveting Before

XX-No. of 09, 15, 25, 37, 50 Pins

Connector Type:

M-Male F-Female,

Housing Color:

L-Blue B-Black W-White

| Number Of Contacts | DIMENSION |        |        |        |
|--------------------|-----------|--------|--------|--------|
|                    | A±0.25    | B±0.20 | C±0.20 | D±0.20 |
| 09                 | 30.80     | 25.00  | 16.50  | 19.10  |
| 15                 | 39.20     | 33.32  | 24.70  | 27.50  |
| 25                 | 53.04     | 47.04  | 38.50  | 41.30  |
| 37                 | 69.40     | 63.50  | 54.80  | 57.70  |

|               |                |              |             |
|---------------|----------------|--------------|-------------|
| UNITS:mm      | SHEET SIZE: A4 | SCALE: ---   | DRWN BY PAN |
| 0~3           | 3~18           | 18~50        | 50~120      |
| ±0.12         | ±0.15          | ±0.3         | ±0.5        |
| CHK'D BY FENG |                | APPR BY ZHAN |             |

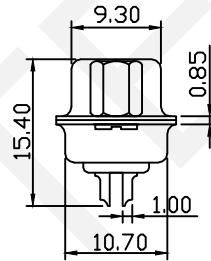
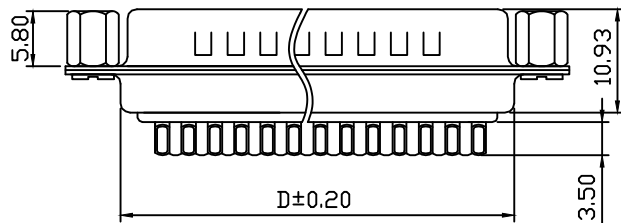
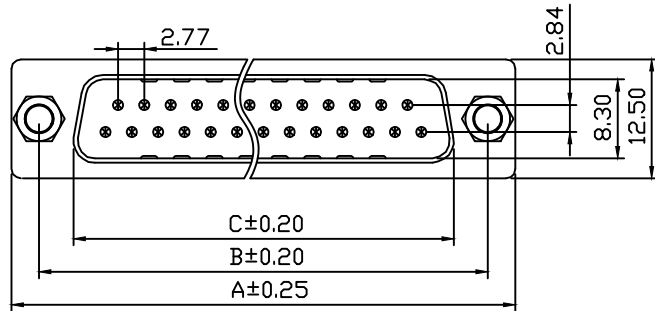
|   |                 |
|---|-----------------|
| D-SUB Connector, Solder Type, Female, Riveting Before |                 |
| THIRD ANGLE PROJECTION                                | RHTAY25A-XX-F-L |



NINGBO RHT ELECTRONIC CO., LTD



RoHS Compliant



Material:

Housing: PBT+30% Glass Filled, UL94V-0

Contacts: Brass,

Gold Plating On Contact Area,

Tin On Solder Tail.

Shell: Steel,

Front Shell Nickel Plating,

Back Shell Tin Plating

Electrical Characteristics:

Current Rating: 5AMP

Insulator Resistance: 1000MΩ Min. at DC 500V

Withstanding Voltage: 500V AC (rms) For 1 Minute

Contact Resistance: 20MΩ Max. Initial

Operating Temperature: -55°C ~ +105°C

Order Information:

RHTAY25A-XX-M-L

D-SUB Connector,

2 Row Solder Type

Riveting Before

XX-No. of 09, 15, 25, 37, 50 Pins

Connector Type:

M-Male F-Female,

Housing Color:

L-Blue B-Black W-White

| Number Of Contacts | DIMENSION |        |        |        |
|--------------------|-----------|--------|--------|--------|
|                    | A±0.25    | B±0.20 | C±0.20 | D±0.20 |
| 09                 | 30.80     | 25.00  | 17.79  | 19.10  |
| 15                 | 39.20     | 33.32  | 25.30  | 27.50  |
| 25                 | 53.04     | 47.04  | 38.96  | 41.30  |
| 37                 | 69.40     | 63.50  | 54.40  | 57.70  |

UNITS:mm

SHEET SIZE: A4

SCALE: ---

DRWN BY PAN

D-SUB Connector, Solder Type,  
Male, Riveting Before

0~3

3~18

18~50

50~120

CHK'D BY FENG

THIRD ANGLE PROJECTION

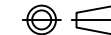
±0.12

±0.15

±0.3

±0.5

APPR BY ZHAN

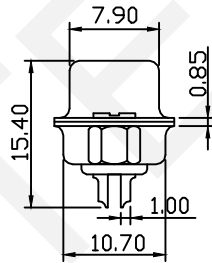
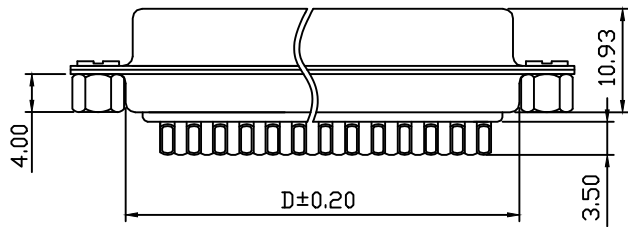
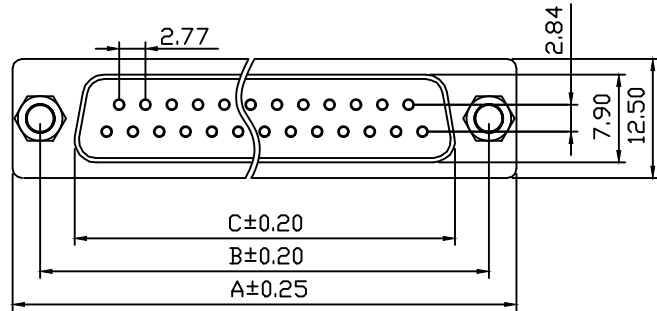


RHTAY25A-XX-M-L



NINGBO RHT ELECTRONIC CO., LTD

RoHS Compliant



Material:

Housing: PBT+30% Glass Filled, UL94V-0

Contacts: Brass,

Gold Plating On Contact Area,

Tin On Solder Tail.

Shell: Steel,

Front Shell Nickel Plating,

Back Shell Tin Plating

Electrical Characteristics:

Current Rating: 5AMP

Insulator Resistance: 1000MΩ Min. at DC 500V

Withstanding Voltage: 500V AC (rms) For 1 Minute

Contact Resistance: 20MΩ Max. Initial

Operating Temperature: -55°C ~ +105°C

Order Information:

RHTAY25D-XX-F-L

D-SUB Connector,

2 Row Solder Type

Riveting After

XX-No. of 09, 15, 25, 37, 50 Pins

Connector Type:

M-Male F-Female,

Housing Color:

L-Blue B-Black W-White

| Number Of Contacts | DIMENSION |        |        |        |
|--------------------|-----------|--------|--------|--------|
|                    | A±0.25    | B±0.20 | C±0.20 | D±0.20 |
| 09                 | 30.80     | 25.00  | 16.50  | 19.10  |
| 15                 | 39.20     | 33.32  | 24.70  | 27.50  |
| 25                 | 53.04     | 47.04  | 38.50  | 41.30  |
| 37                 | 69.40     | 63.50  | 54.80  | 57.70  |

UNITS:mm

SHEET SIZE: A4

SCALE: ---

DRWN BY PAN

D-SUB Connector, Solder Type,  
Female, Riveting After

0~3

3~18

18~50

50~120

CHK'D BY FENG

THIRD ANGLE PROJECTION

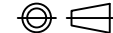
±0.12

±0.15

±0.3

±0.5

APPR BY ZHAN

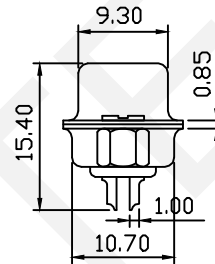
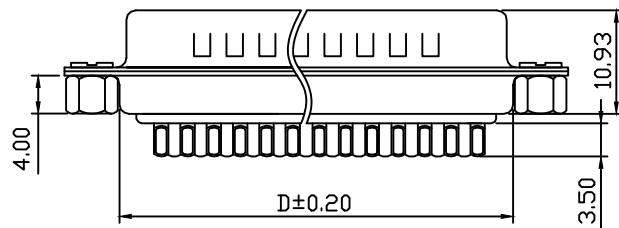
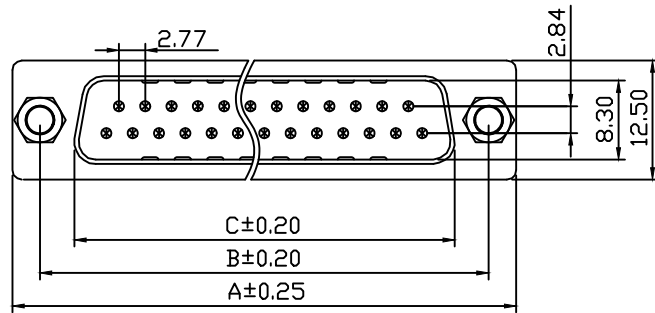


RHTAY25D-XX-F-L



NINGBO RHT ELECTRONIC CO., LTD

RoHS Compliant



Material:

Housing: PBT+30% Glass Filled, UL94V-0

Contacts: Brass,

Gold Plating On Contact Area,

Tin On Solder Tail.

Shell: Steel,

Front Shell Nickel Plating,

Back Shell Tin Plating

Electrical Characteristics:

Current Rating: 5AMP

Insulator Resistance: 1000MΩ Min. at DC 500V

Withstanding Voltage: 500V AC (rms) For 1 Minute

Contact Resistance: 20MΩ Max. Initial

Operating Temperature: -55°C ~ +105°C

Order Information:

RHTAY25D-XX-M-L

D-SUB Connector,

2 Row Solder Type

Riveting After

XX-No. of 09, 15, 25, 37, 50 Pins

Connector Type:

M-Male F-Female,

Housing Color:

L-Blue B-Black W-White

| Number of Contacts | DIMENSION |        |        |        |
|--------------------|-----------|--------|--------|--------|
|                    | A±0.25    | B±0.20 | C±0.20 | D±0.20 |
| 09                 | 30.80     | 25.00  | 17.79  | 19.10  |
| 15                 | 39.20     | 33.32  | 25.30  | 27.50  |
| 25                 | 53.04     | 47.04  | 38.96  | 41.30  |
| 37                 | 69.40     | 63.50  | 54.40  | 57.70  |

UNITS:mm

SHEET SIZE: A4

SCALE: ---

DRWN BY PAN

D-SUB Connector, Solder Type,  
Male, Riveting After

0~3

3~18

18~50

50~120

CHK'D BY FENG

THIRD ANGLE PROJECTION

±0.12

±0.15

±0.3

±0.5

APPR BY ZHAN



RHTAY25D-XX-M-L



NINGBO RHT ELECTRONIC CO., LTD