

Standard

Electrical Specification:

Current Rating: 2 AMP

Insulator Resistance: 1000M ohms min. at DC 500V

Contact Resistance: 20m ohms max. at DC 100mA

Operating Temperature: -20°C~+85°C

Application Wire AWG : 20-24 AWG

Material:

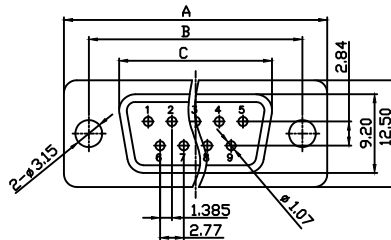
Housing: 30% Glass Filled PBT UL94V-0

Contacts: Phosphor Bronze

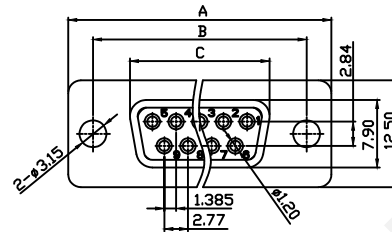
Shell: Steel, 100u' Tin Over 50u' Min Nickel

Clinch Nut: Brass, 100u' Min Nickel Plated

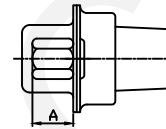
Screwlock: Brass, 100u' Min Nickel Plated



Male



Female



CC TYPE

ORDER INFORMATION

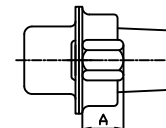
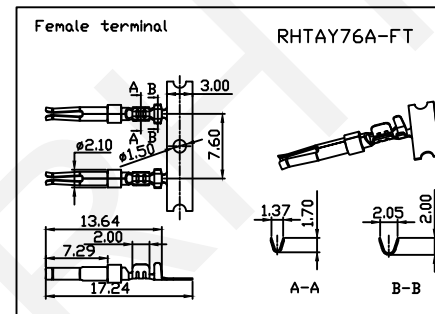
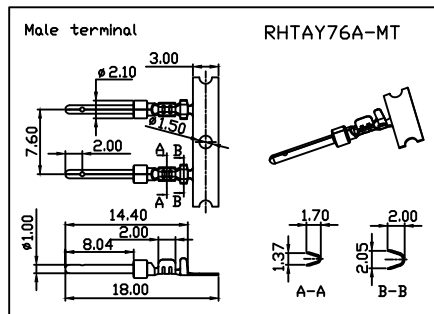
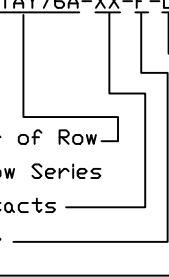
Product NO.: RHTAY76A-XX-F-L

Contact Number of Row
76A=D-SUB 2 Row Series

Number of Contacts

M=Male F=Female

L=Blue B=Black



CS TYPE

Position	A±0.2	B±0.2	C±0.2	
			Male	Female
9P	30.80	24.99	17.90	16.33
15P	39.14	33.32	26.50	24.66
25P	53.04	47.04	40.00	38.38
37P	69.32	63.50	56.50	54.84

RHTECP NINGBO RHT ELECTRONIC CO.,LTD

UNITS:mm	SHEET SIZE: A4			SCALE:---	DRWN BY PAN
0~3	3~18	18~50	50~120	CHK'D BY FENG	
±0.12	±0.15	±0.3	±0.5	APPR BY ZHAN	

2 ROW TYPE	
THIRD ANGLE PROJECTION	RHTAY76A-XX-F-L