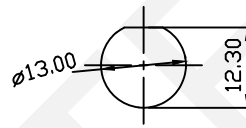


SECTION A-A



PANEL CUT-OUT
Thickness 3.0mm Max

Material&SPEC

- 1.Shell Material:PPD,PA66 UL94V-0
- 2.Insulation Materials:PPS, High Temperature 260°C
- 3.Contact:Brass,Gold-Plated
- 4.Insulation Resistance:2000MΩ
- 5.Number Of Poles:2~9 Poles
- 6.Coupling:Threaded
- 7.Termination:Solder
- 8.Cable Outer Diameter:Not-4~6.5mm;G-5~8mm
- 9.IP Rating:IP68
- 10.Durability:500 Mating Cycles
- 11.Temperature Range:-25°C~+80°C

ORDER INFORMATION:

RHTOY13 A2-XX

IP68 Connector Type
Female Socket For Panel Mount
Number Of Poles, 2~9 Poles

Solder Contact Arrangement And Spec

Number Of Contact	2	3	4	5	6	7	8
Male Contact Face View							
Rated Current (A)	13A	13A	5A	5A	5A	5A	3A
Contact Diameter	∅1.6x2	∅1.6x3	∅1.0x4	∅1.0x5	∅1.0x6	∅1.0x7	∅0.7x9
Rated Voltage(AC.V)	250V	250V	200V	180V	125V	125V	125V
Test Voltage(AC.V)1 Min	1500V	1500V	1500V	1000V	1000V	1000V	1000V
Contact Resistance mΩ	2	2	5	5	5	5	10
Wire Size Solder mm ² /AWG	≤2/14	≤2/14	≤0.785/18	≤0.785/18	≤0.785/18	≤0.785/18	≤0.785/18

Match Connector

RHTOY13A1	

NINGBO RHT ELECTRONIC CO.,LTD

UNITS:mm	SHEET SIZE: A4	SCALE:---	DRWN BY PAN
0~3	3~18	18~50	50~120
±0.12	±0.15	±0.3	±0.5

CHK'D BY FENG
APPR BY ZHAN

W13 CONN, Solder, Female Socket For Panel Mount, IP68
THIRD ANGLE PROJECTION
RHTOY13A2-XX