

Material:

Housing Material: PBT+15%G.F

Contact: Brass, Tin plated

Technical Parameters:

Contact Resistance: $\leq 30m\Omega$

Insulation Resistance: $\geq 100M\Omega$

Withstanding Voltage: 500V AC(50Hz)1min

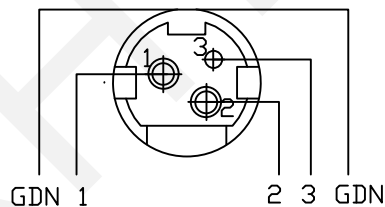
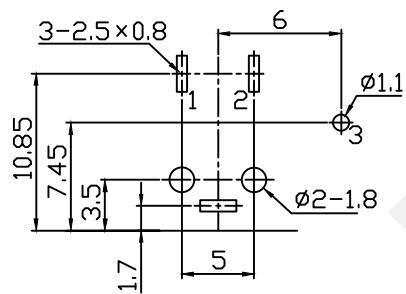
Rated Load: 1&2: 20V DC 7.5A MAX; 3: 20V DC 1A

Life: ≥ 5000 Times

Actuating Force: 10~50N

Operating Temperature: $-25^{\circ}C \sim 70^{\circ}C$

PCB Mounting Hole Diagram



Circuit Diagram

ORDER INFORMATION

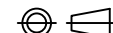
RHTAY88A-03-B

DC Power Jack

03-3 PIN; 04-4PIN

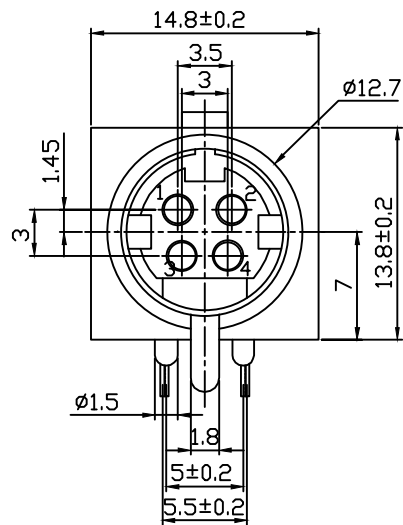
Color: B Black

 NINGBO RHT ELECTRONIC CO.,LTD

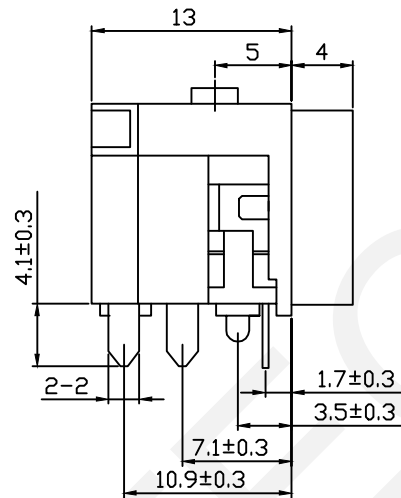
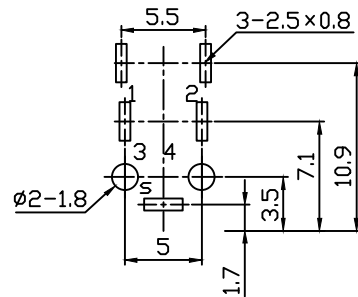
| | | | | | |
|------------|----------------|-----------|-----------|---------------|---|
| UNITS:mm | SHEET SIZE: A4 | | | SCALE:--- | DRWN BY PAN |
| 0~3 | 3~18 | 18~50 | 50~120 | CHK'D BY FENG | THIRD ANGLE PROJECTION  |
| ± 0.12 | ± 0.15 | ± 0.3 | ± 0.5 | APPR BY ZHAN | |

DC Power Jack

RHTAY88A



PCB Mounting Hole Diagram



Material:

Housing Material: PBT+15%G.F

Contact: Brass, Tin plated

Technical Parameters:

Contact Resistance: $\leq 30m\Omega$

Insulation Resistance: $\geq 100M\Omega$

Withstanding Voltage: 500V AC(50Hz)1min

Rated Load: 7.5A 20V DC

Life: ≥ 5000 Times

Actuating Force: 10~50N

Operating Temperature: $-25^{\circ}C \sim 70^{\circ}C$

ORDER INFORMATION

RHTAY88A-04-B

DC Power Jack

03-3 PIN; 04-4PIN

Color: B Black

RHTECP NINGBO RHT ELECTRONIC CO.,LTD

UNITS:mm

SHEET SIZE: A4

SCALE: ---

DRWN BY PAN

DC Power Jack

0~3

3~18

18~50

50~120

CHK'D BY FENG

THIRD ANGLE PROJECTION

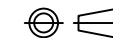
± 0.12

± 0.15

± 0.3

± 0.5

APPR BY ZHAN



RHTAY88A