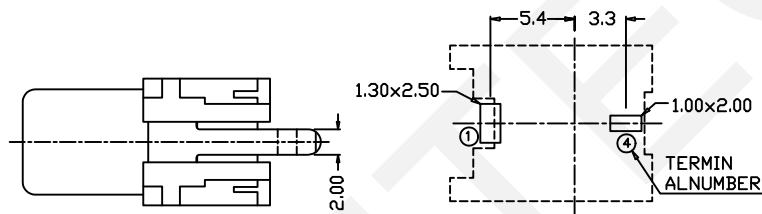
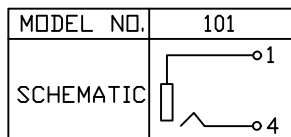


RCA MATE PLUG



PCB LAYOUT  
(BOTTOM MEW)



Electrical Specification:

Contact Resistance : 30mΩ Max

Insulation Resistance : 50MΩ Min at DC 500V

Withstand Voltage : AC 500V(50Hz) 1min

Operating Temperature : -25°C~+85°C

Materials:

Housing : PBT UL94V~0

Terminal 1 : C.R.Steel

Terminal 4 : Brass

Order Information:

RHTAYCA-101-N-R

RCA Jack Type

N:Nickel Plated

Color: R:Red

B:Black Y:Yellow W:White



NINGBO RHT ELECTRONIC CO.,LTD

UNITS:mm	SHEET SIZE: A4			SCALE:---
0~3	3~18	18~50	50~120	
±0.12	±0.15	±0.3	±0.5	

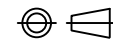
DRWN BY PAN

CHK'D BY FENG

APPR BY ZHAN

RCA Jack PCB Mount Vertical

THIRD ANGLE PROJECTION



RHTAYCA-101