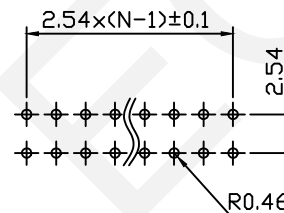
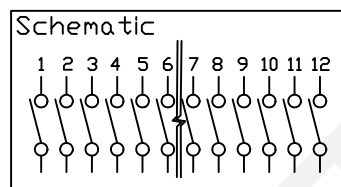
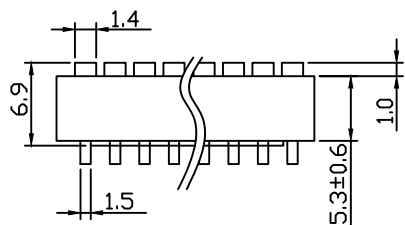


Switching Characteristics:
 Mechanical Life: 2000 Operations Per Switch
 Operation Force: ≤9.8N Max.
 Stroke: 2.0mm
 Operation Temp: -20°C~+70°C
 Electrical Life: 2000 Operations Per Switch-24 VDC 25mA
 Contact Resistance: 50m Max. At Initial
 Non-Switching Rating: 100mA, 50VDC
 Switching Rating: 25mA, 24VDC
 Circuit: Single Pole Single Throw
 Contact: Half Gold/Sn



PCB Layout

Model No.	No.Pos	A
RHTGYAT-01	1	4.10
RHTGYAT-02	2	6.64
RHTGYAT-03	3	9.18
RHTGYAT-04	4	11.72
RHTGYAT-05	5	14.26
RHTGYAT-06	6	16.80
RHTGYAT-07	7	19.34
RHTGYAT-08	8	21.88
RHTGYAT-09	9	24.42
RHTGYAT-10	10	26.96
RHTGYAT-12	12	32.04

Order Information

RHTGYAT-XX-X-X-X

Bulge Type Dip Switch

Number Of Pos.: 01~12Pos.

Color: R=Red, B=Blue, N=Black

0: Non-Sealed 1: With Sealed

Packaging: 0=Tube 1=Tape

Soldering And Cleaning Processes Keep All Switch Contacts In Their "OFF" Position For All Operations

RHTECP NINGBO RHT ELECTRONIC CO.,LTD

UNITS:mm	SHEET SIZE: A4	SCALE:---	DRWN BY PAN
0~3	3~18	18~50	50~120
±0.12	±0.15	±0.3	±0.5

CHK'D BY FENG
APPR BY ZHAN

SPST Standard Right Angle Type	
THIRD ANGLE PROJECTION	RHTGYAT

