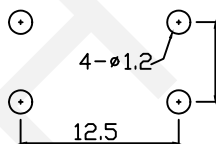
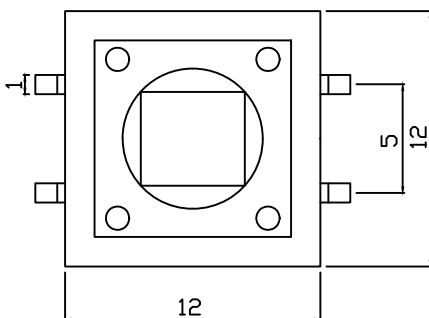


ELECTRICAL

1. Rating: 50mA 12VDC
2. Contact Resistance: $\leq 50\Omega$ max (Initial)
3. Insulation Resistance: $\geq 100M\Omega$ (min DC 250V)
4. Dielectric Strength: AC 250V (50/60Hz For 1 minute)
5. Electrically Life: 100000 Cycles
6. Environment Temperature: $-20^{\circ}\text{C} \sim +70^{\circ}\text{C}$
7. Operating Force: 180/250 ($\pm 30\text{gf}$)
8. Seal Temperature: $260^{\circ}\text{C} \sim 280^{\circ}\text{C}$



PCB LAYOUT

ORDER INFORMATION

RHTGYS1204-7.3-180

Part Number

Height: 7.3mm

Operating Force: 180~250gf

RHTECP NINGBO RHT ELECTRONIC CO.,LTD

UNITS:mm	SHEET SIZE: A4			SCALE:---	DRWN BY PAN
0~3	3~18	18~50	50~120	CHK'D BY FENG	
± 0.12	± 0.15	± 0.3	± 0.5	APPR BY ZHAN	

12x12 Tact Switch Series	
THIRD ANGLE PROJECTION	RHTGYS1204

