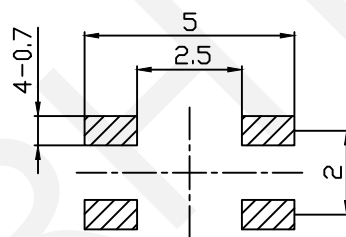
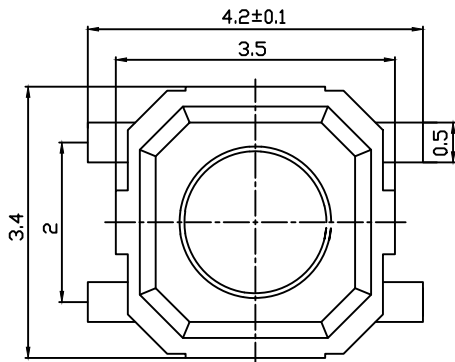
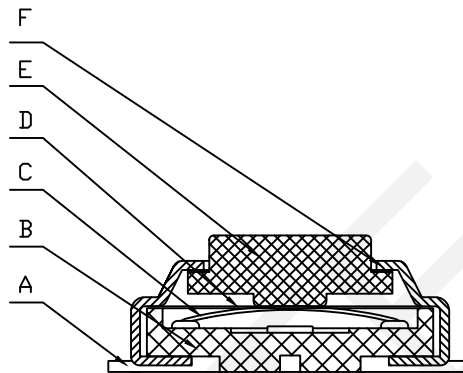


SCHEMATIC



P.C.B Layout

Electrical:

1. Rating: 50mA 12V DC
2. Contact Resistance: 100mΩ Max.
3. Insulation Resistance: 100MΩ Min, 100V DC
4. Dielectric Voltage Proof: 250V AC For 1min
5. Electrically Life: 100000 Cycles Min.
6. Operating Force: 250±50gf
7. Environment Temperature: -30°C~+80°C

Materials:

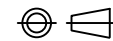
- A. Cards: Phosphor 0.15
- B. Pedestal: LCP, Black
- C. Shrapnel: Stainless Steel
- D. Waterproof Membrane: 0.05
- E. Push Button: LCP, Black
- F. Cover: Stainless Steel 0.1

ORDER INFORMATION

RHTGYS3302-1.5-250-B

3x3mm Tact Switch
 Height: 1.5mm
 Operating Force: 250(±50gf)
 Packing: B=Bulk

 NINGBO RHT ELECTRONIC CO.,LTD

UNITS:mm	SHEET SIZE: A4			SCALE:---	DRWN BY PAN
0~3	3~18	18~50	50~120	CHK'D BY FENG	THIRD ANGLE PROJECTION 
±0.12	±0.15	±0.3	±0.5	APPR BY ZHAN	

3x3mm Tact Switch

RHTGYS3302