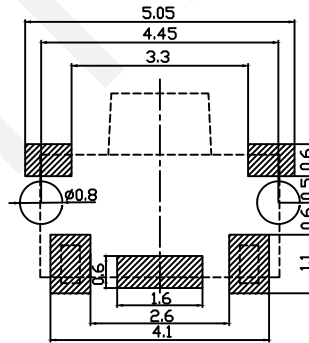
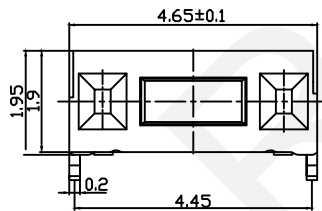


SCHEMATIC



P.C.B Layout

Electrical:

1. Rating: 50mA 12V DC
2. Contact Resistance: 100mΩ Max.
3. Insulation Resistance: 100MΩ Min, 100V DC
4. Dielectric Voltage proof: 250V AC For 1Min
5. Electrically Life: 100000 Cycles Min.
6. Operating Force: 160±50gf
7. Environment Temperature: -30°C~+80°C

Materials:

1. Cards: Phosphor, Silver Plated
2. Pedestal: LCP, White
3. Shrapnel: Stainless Steel
4. Push Button: LCP, Black
5. Cover: H62, Silver Plated

ORDER INFORMATION

RHTGYS2401-3.5-160-B

2x4mm Tact Switch

Height: 3.5mm

Operating Force: 160(±50gf)

Packing: B-Bulk

RHTECP NINGBO RHT ELECTRONIC CO.,LTD

UNITS:mm

SHEET SIZE: A4

SCALE: ---

DRWN BY PAN

2x4mm All Inclusive Without Column Tact

0~3

3~18

18~50

50~120

CHK'D BY FENG

THIRD ANGLE PROJECTION

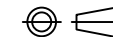
±0.12

±0.15

±0.3

±0.5

APPR BY ZHAN



RHTGYS2401