

SPECIFICATIONS

Rating: 0.3A 50VDC

Contact Resistance: 30MΩ Max

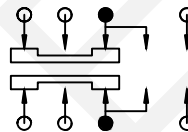
Insulation Resistance: 500VDC 100MΩ Min

Dielectric Strength: 500V AC 1 Minute

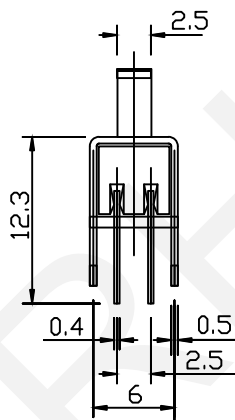
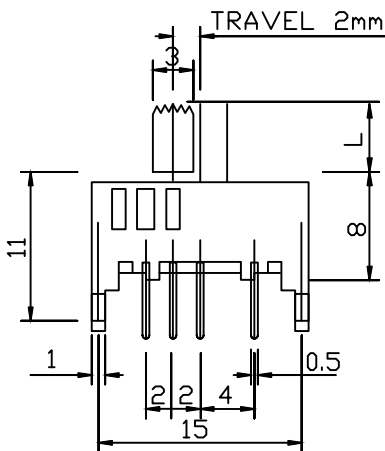
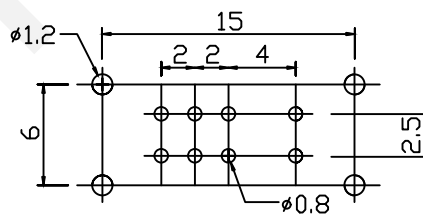
Operating Force: 100gf~800gf

Electrical Life: 10,000 Cycles

SCHEMATIC



P.C.B.HOLE DETAIL



ORDER INFORMATION

RHTGYS40 - 2 3 D 01 - X X - X

Slide Switch Type _____

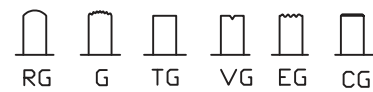
Pole _____

Throw _____

| Travelling | | | | | |
|------------|-----|-----|-----|-----|-----|
| C | D | E | F | G | H |
| 1.5 | 2.0 | 2.5 | 3.0 | 3.5 | 4.0 |
| I | J | K | L | N | P |
| 4.5 | 5.0 | 5.5 | 6.0 | 7.0 | 8.0 |

Sequential No. _____

Knob Type



Knobe Height _____

Operating Force _____



NINGBO RHT ELECTRONIC CO.,LTD

UNITS:mm

SHEET SIZE: A4

SCALE:---

DRWN BY PAN

(2P4T) Slide Switch Series

0~3

3~18

18~50

50~120

CHK'D BY FENG

THIRD ANGLE PROJECTION

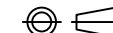
±0.12

±0.15

±0.3

±0.5

APPR BY ZHAN



RHTGYS40-23D01