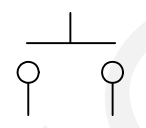
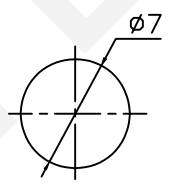


Circuitry



<math>\langle \square \rangle</math>-OFF

Mounting



ELECTRICAL

Rating: 3A 125V AC ,1A 250V AC

Contact Resistance: 20m $\Omega$  Max

Insulation Resistance: 100M $\Omega$ /500VDC Min

Withstanding Voltage: AC1000V/1Min

Operating Temperature: -25 $^{\circ}$ C~+85 $^{\circ}$ C

Electrical Life: 50000 Cycles

ORDER INFORMATION

Product NO.: RHTGYBS-004 X X

Push Button Switch Series

Function: \_\_\_\_\_

C= $\square$ ON- $\langle \square \rangle$ OFF D= $\square$ OFF- $\langle \square \rangle$ ON

Button Color: \_\_\_\_\_

R=Red G=Green B=Black

NINGBO RHT ELECTRONIC CO.,LTD

UNITS:mm	SHEET SIZE: A4			SCALE:----	DRWN BY PAN
0~3	3~18	18~50	50~120	CHK'D BY FENG	
$\pm 0.12$	$\pm 0.15$	$\pm 0.3$	$\pm 0.5$	APPR BY ZHAN	

Push Button Switch Series

THIRD ANGLE PROJECTION

RHTGYBS-004