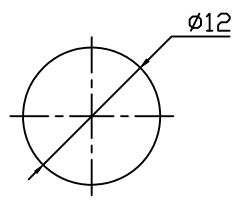
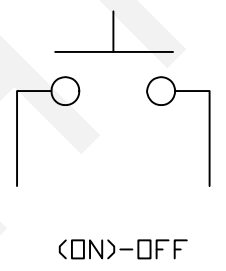


Mounting



Circuitry



ELECTRICAL

Rating: 3A 125V AC ,1A 250V AC
 Contact Resistance: 20mΩ Max
 Insulation Resistance: 100MΩ/500VDC Min
 Withstanding Voltage: AC1000V/1Min
 Operating Temperature: -25°C~+85°C
 Electrical Life: 50000 Cycles

ORDER INFORMATION

Product NO.: RHTGYBS-006 X X

Push Button Switch Series

Function: _____

B=ON-OFF C=ON-(OFF) D=OFF-(ON)

Button Color: _____

R=Red G=Green B=Black

RHTECP NINGBO RHT ELECTRONIC CO.,LTD

UNITS:mm	SHEET SIZE: A4		SCALE:---
0~3	3~18	18~50	50~120
±0.12	±0.15	±0.3	±0.5

DRWN BY PAN
 CHK'D BY FENG
 APPR BY ZHAN

Push Button Switch Series
 THIRD ANGLE PROJECTION
 RHTGYBS-006