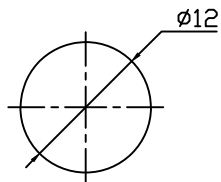
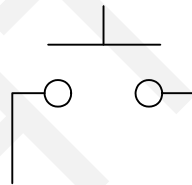


Mounting



Circuitry



(ON)-OFF

ELECTRICAL

Rating: 3A 125V AC ,1A 250V AC

Contact Resistance: 20mΩ Max

Insulation Resistance: 100MΩ/500VDC Min

Withstanding Voltage: AC1000V/1Min

Operating Temperature: -25°C~+85°C

Electrical Life: 50000 Cycles

ORDER INFORMATION

Product NO.: RHTGYBS-009 X X

Push Button Switch Series

Function:

B=ON-OFF C=ON-(OFF) D=OFF-(ON)

Button Color:

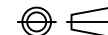
R=Red G=Green B=Black

NINGBO RHT ELECTRONIC CO.,LTD

UNITS:mm	SHEET SIZE: A4			SCALE:---	DRWN BY PAN
0~3	3~18	18~50	50~120	CHK'D BY FENG	
±0.12	±0.15	±0.3	±0.5	APPR BY ZHAN	

Push Button Switch Series

THIRD ANGLE PROJECTION



RHTGYBS-009