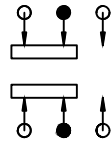


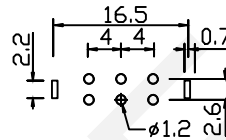
SCHEMATIC



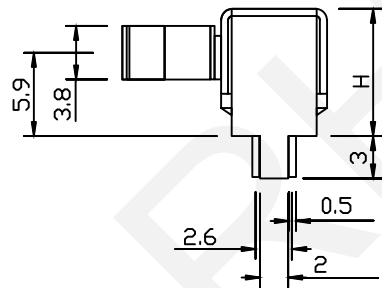
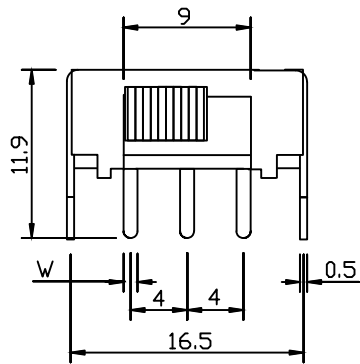
SPECIFICATIONS

Rating: 0.5A 50VDC
 Contact Resistance: 30MΩ Max
 Insulation Resistance: 500VDC 100MΩ Min
 Dielectric Strength: 500V AC 1 Minute
 Operating Force: 100gf~800gf
 Electrical Life: 10,000 Cycles

P.C.B.HOLE DETAIL



W: Terminal Width
 H: Terminal Height



Switch Model	Height	Terminal
RHTGYK31-22F02	9	1
RHTGYK31-22F03	10	1
RHTGYK31-22F05	11	0.9
RHTGYK31-22F07	14	1.3
RHTGYK31-22F08	18	1.3
RHTGYK31-22F09	21	1.3
RHTGYK31-22F10	12	1.3
RHTGYK31-22F12	8	1
RHTGYK31-22F16	8.5	1
RHTGYK31-22F17	9.5	1

ORDER INFORMATION

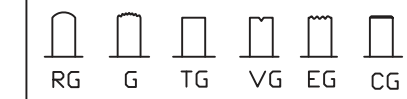
RHTGYK31 - 2 2 F 02 - X X - X

Slide Switch Type _____
 Pole _____
 Throw _____

Travelling					
C	D	E	F	G	H
1.5	2.0	2.5	3.0	3.5	4.0
I	J	K	L	N	P
4.5	5.0	5.5	6.0	7.0	8.0

Sequential No. _____

Knob Type



Knobe Height _____

Operating Force _____

RHTECP NINGBO RHT ELECTRONIC CO.,LTD

UNITS:mm	SHEET SIZE: A4	SCALE:---	DRWN BY PAN
0~3	3~18	18~50	50~120
±0.12	±0.15	±0.3	±0.5

CHK'D BY FENG
 APPR BY ZHAN

(2P2T) Slide Switch Series



RHTGYK31-22F02