

ELECTRICAL

Rating: 4A 125V AC ,2A 250V AC  
 Contact Resistance: 20m $\Omega$  Max  
 Insulation Resistance: 100M $\Omega$ /500VDC Min  
 Withstanding Voltage: AC1000V/1Min  
 Operating Temperature: -25 $^{\circ}$ C~+85 $^{\circ}$ C  
 Electrical Life: 50000 Cycles

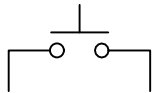
ORDER INFORMATION

Product NO: RHTGYBS-013 X

Push Button Switch Series

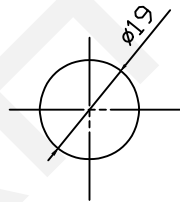
Function: \_\_\_\_\_  
 B=ON-OFF C=ON-(OFF) D=OFF-(ON)

Circuitry



(ON)-OFF

Mounting

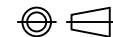


**RHTECP** NINGBO RHT ELECTRONIC CO.,LTD

UNITS:mm	SHEET SIZE: A4			SCALE:---	DRWN BY PAN
0~3	3~18	18~50	50~120	CHK'D BY FENG	
$\pm 0.12$	$\pm 0.15$	$\pm 0.3$	$\pm 0.5$	APPR BY ZHAN	

Push Button Switch Series

THIRD ANGLE PROJECTION



RHTGYBS-013