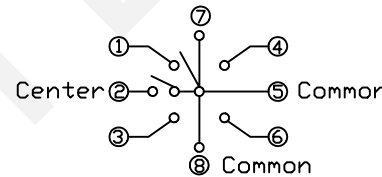
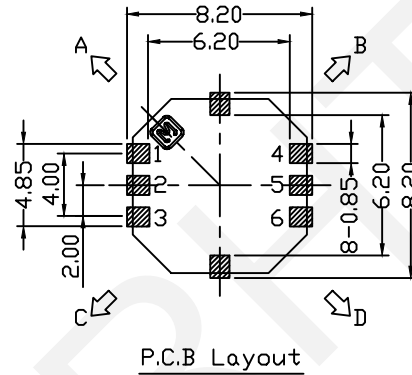
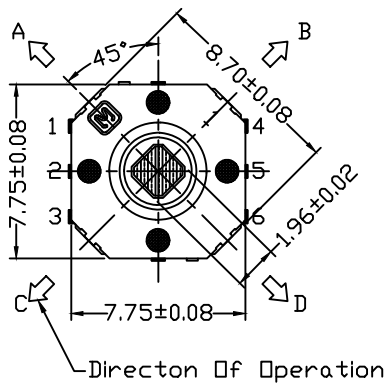


- Material:
- 1.Principal axis:PA46,Black
 - 2.Shaft Guard:LCP,Black
 - 3.Cover:Stainless Steel,Silver Plated
 - 4.Base:PA46,Black
 - 5.Contact :Stainless Steel,Silver Plated

- Electrical Characteristics:
- Rating:0.1A DC12V
 - Insulation Resistance:
100MΩ Min(DC100V)
 - Dielectric Withstanding Voltage:
AC100V(50/60Hz Foy 1minute)
 - 4.Mechanical Life:100,000 Cycles
 - 5.Temperature Range:-10 To +60
 - 6.Operating Force:5-150gf±30gf



Circuit Diagram

RHTECP NINGBO RHT ELECTRONIC CO.,LTD

UNITS:mm	SHEET SIZE: A4			SCALE:---	DRWN BY PAN
0~3	3~18	18~50	50~120	CHK'D BY FENG	THIRD ANGLE PROJECTION
±0.12	±0.15	±0.3	±0.5	APPR BY ZHAN	

Multi-Function Switches

RHTGYT-01