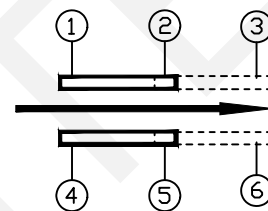
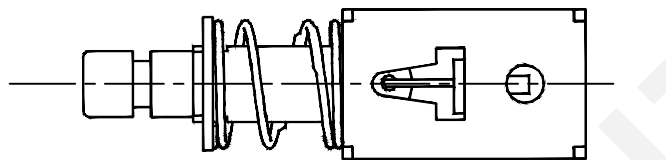
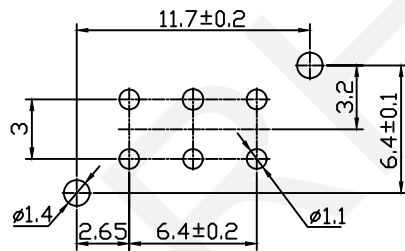


Electrical:
 Voltage Rating:30V DC
 Current Rating:0.3A
 Contact Resistance:50mΩ Max.
 Insulation Resistance:100MΩ Min
 Dielectric Withstanding Voltage:250V AC
 Mechanical:
 Operating Force:2~6N
 Operating Life:10000 Cycles
 Notes:
 Install The Switch: keep The Appearance
 Clean And Smooth Without Scratching And Feel Good.



Schematic Diagram



PCB Mounting Hole

Order Information:

RHTGYS-003-22 A B A-X-X

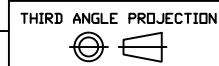
Push Switch
 A-Lever Type
 B-Class Of metal House
 A-Terminal Type
 Switching Action:
 N-Non Locking L-Self Locking
 Handle Color:BL-Blue
 R-Red B-Black W-White



NINGBO RHT ELECTRONIC CO.,LTD

UNITS:mm	SHEET SIZE: A4	SCALE:---	DRWN BY PAN
0~3	3~18	18~50	50~120
±0.12	±0.15	±0.3	±0.5

CHK'D BY FENG
 APPR BY ZHAN



Push Switchs

RHTGYS-003-22ABA-X-X